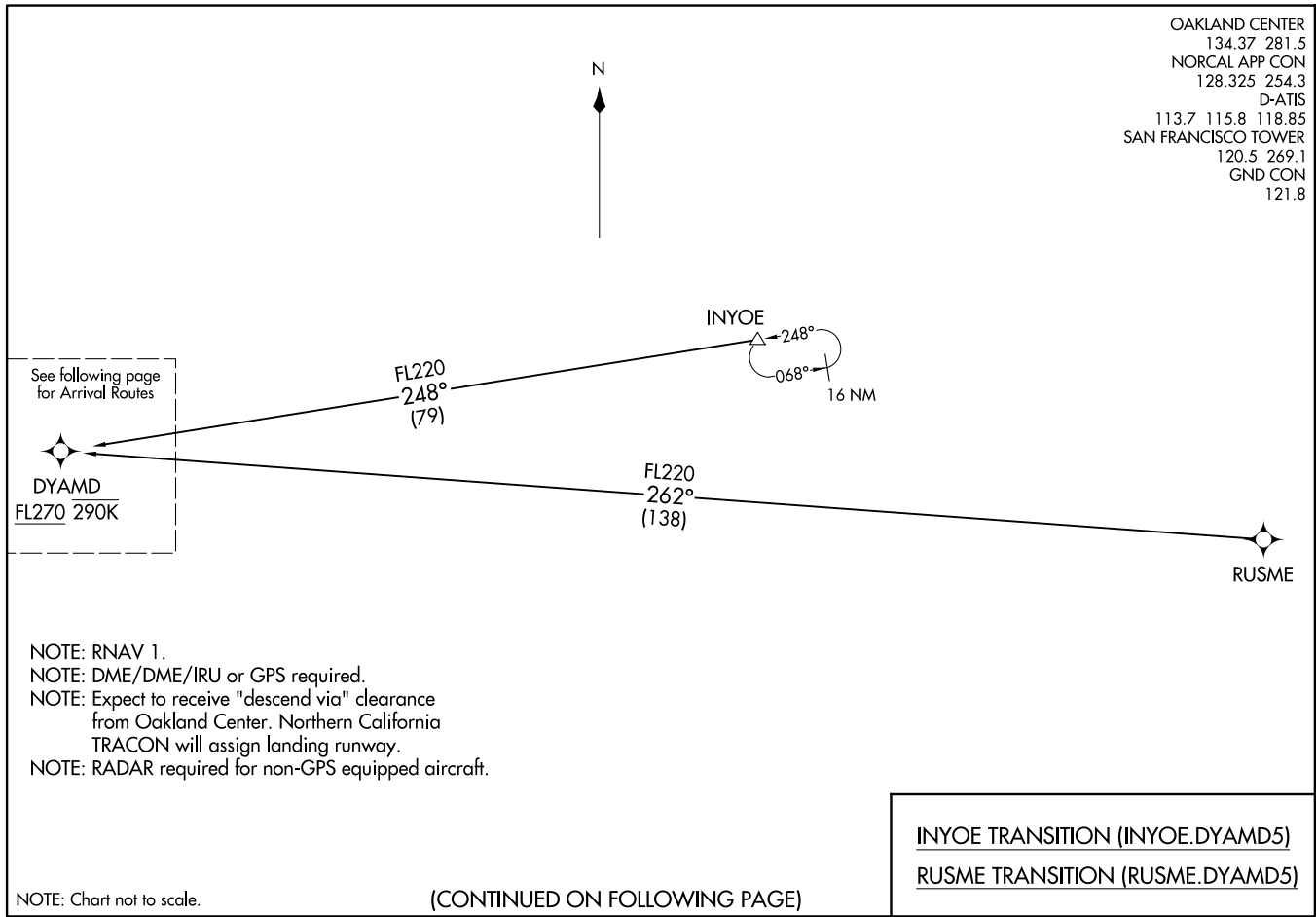


DYAMD FIVE ARRIVAL (RNAV) Transition Routes  
(DYAMD.DYAMD5) 03JAN19

SAN FRANCISCO, CALIFORNIA  
SAN FRANCISCO INTL (SFO)



OAKLAND CENTER  
134.37 281.5  
NORCAL APP CON  
128.325 254.3  
D-ATIS  
113.7 115.8 118.85  
SAN FRANCISCO TOWER  
120.5 269.1  
GND CON  
121.8

(DYAMD.DYAMD5) 19003  
DYAMD FIVE ARRIVAL (RNAV) Transition Routes  
AL-375 (FAI)

SAN FRANCISCO INTL (SFO)  
SAN FRANCISCO, CALIFORNIA

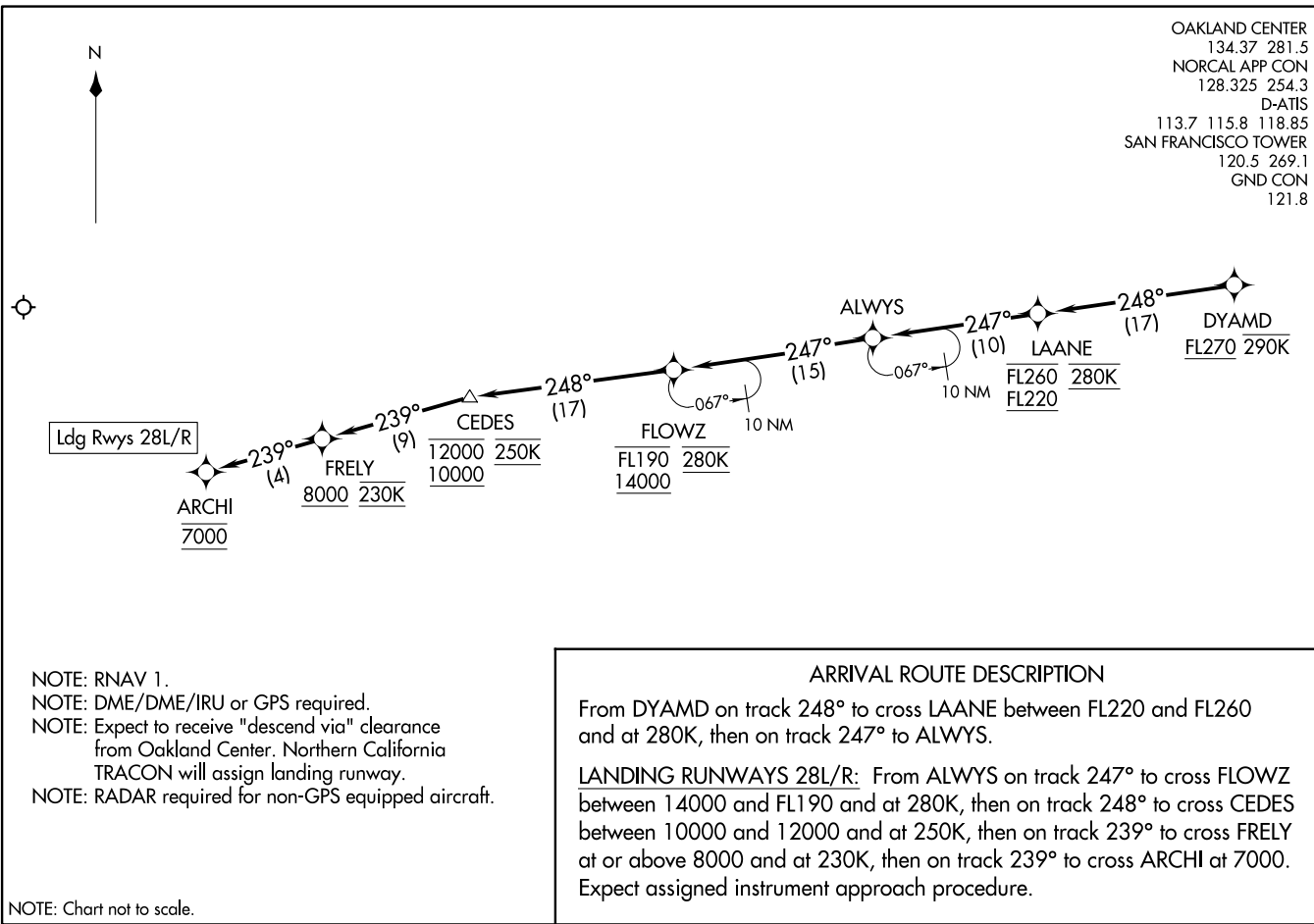
INYOE TRANSITION (INYOE.DYAMD5)  
RUSME TRANSITION (RUSME.DYAMD5)

(CONTINUED ON FOLLOWING PAGE)

NOTE: Chart not to scale.

DYAMD FIVE ARRIVAL (RNAV) Arrival Routes  
 (DYAMD: DYAMD5) 03JAN19

SAN FRANCISCO, CALIFORNIA  
 SAN FRANCISCO INTL (SFO)



OAKLAND CENTER  
 134.37 281.5  
 NORCAL APP CON  
 128.325 254.3  
 D-ATIS  
 113.7 115.8 118.85  
 SAN FRANCISCO TOWER  
 120.5 269.1  
 GND CON  
 121.8

(DYAMD: DYAMD5) 19003  
 DYAMD FIVE ARRIVAL (RNAV) Arrival Routes  
 AL-375 (FAA)

SAN FRANCISCO INTL (SFO)  
 SAN FRANCISCO, CALIFORNIA

**ARRIVAL ROUTE DESCRIPTION**  
 From DYAMD on track 248° to cross LAANE between FL220 and FL260 and at 280K, then on track 247° to ALWAYS.  
**LANDING RUNWAYS 28L/R:** From ALWAYS on track 247° to cross FLOWZ between 14000 and FL190 and at 280K, then on track 248° to cross CEDES between 10000 and 12000 and at 250K, then on track 239° to cross FRELY at or above 8000 and at 230K, then on track 239° to cross ARCHI at 7000. Expect assigned instrument approach procedure.

NOTE: Chart not to scale.