

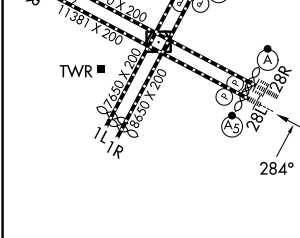
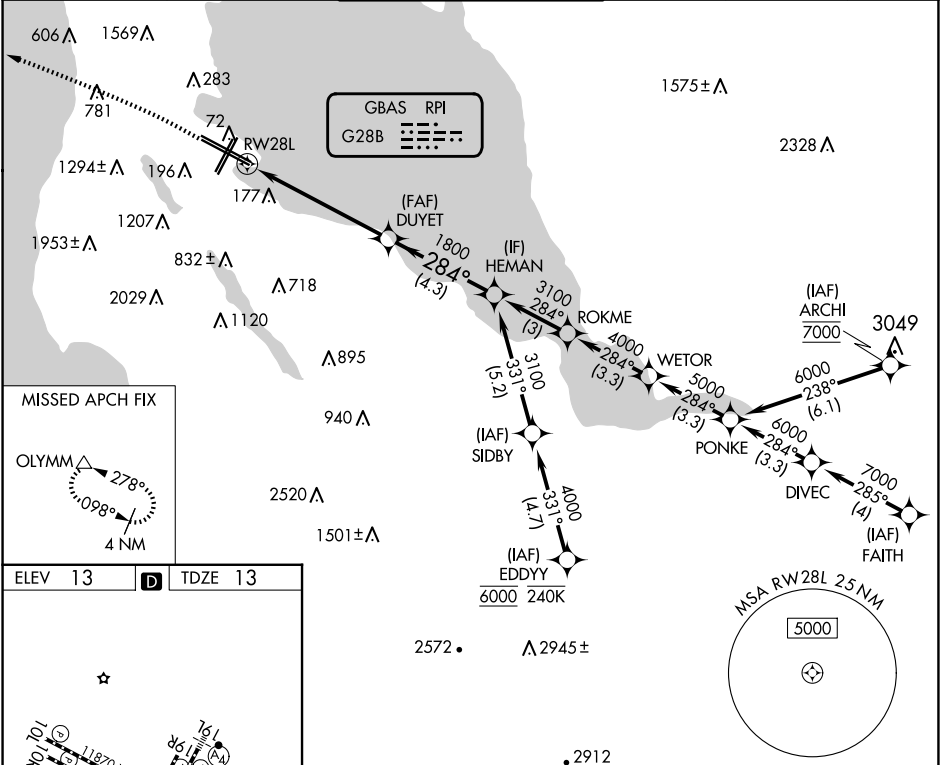
GBAS CH <b>21037</b> RNP <b>G28B</b>	APP CRS <b>284°</b>	Rwy Ldg <b>10275</b> TDZE <b>13</b> Apt Elev <b>13</b>
--	------------------------	--

# GLS RWY 28L

SAN FRANCISCO INTL (SFO)

RNP APCH-GPS.	<p>MALSRL</p>	<p>MISSED APPROACH: Climb to 1020 then climbing left turn to 4000 direct OLYMM and hold.</p> <p>*Missed approach requires minimum climb of 330 feet per NM to 1600; if unable to meet climb gradient, see RNAV (GPS) Rwy 28L.</p>
<p>Simultaneous approach authorized. Simultaneous operations require use of vertical guidance; maintain last assigned altitude until established on glidepath. Use of FD or AP required during simultaneous operations. Autopilot coupled required NA below 213.</p> <p>*RVR 1800 authorized with use of FD or AP or HUD to DA.</p>		

D-ATIS <b>113.7 115.8</b> <b>118.85</b>	NORCAL APP CON <b>134.5 338.2</b>	SAN FRANCISCO TOWER <b>120.5 269.1</b>	GND CON <b>121.8</b>	CLNC DEL <b>118.2</b>	CPDLC
---	--------------------------------------	---	-------------------------	--------------------------	-------



ELEV 13	<b>D</b>	TDZE 13		
<p>1020 4000 OLYMM</p> <p>VGSI and GLS glidepath not coincident (VGSI Angle 2.85/TCH 67).</p>				
<p>HEMAN</p> <p>DUYET</p> <p>1800 3100</p> <p>284°</p> <p>1800</p> <p>GP 2.85° TCH 53</p>		<p>5.7 NM</p> <p>4.3 NM</p>		
CATEGORY	A	B	C	D
GLS DA*	213/24		200 (200-½)	

HIRL all Rwys  
TDZ/CL Rwys 19L and 28R  
REIL Rwys 1L, 1R and 10L

SW-2, 16 APR 2026 to 14 MAY 2026

SW-2, 16 APR 2026 to 14 MAY 2026