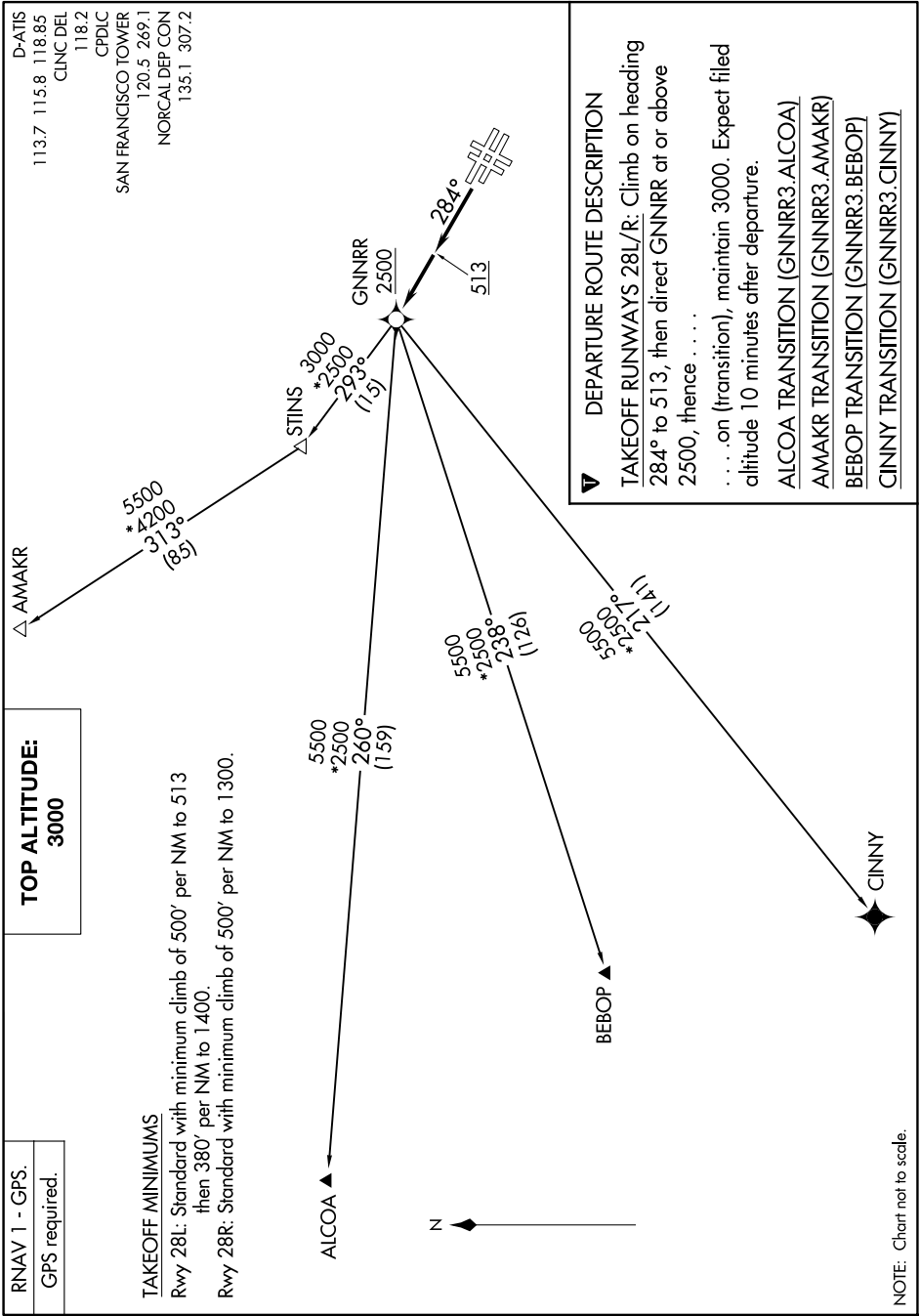


# GNNRR THREE DEPARTURE (RNAV)

AL-375 (FAA)

SAN FRANCISCO INTL (SFO)  
SAN FRANCISCO, CALIFORNIA

SW-2, 16 APR 2026 to 14 MAY 2026



RNAV 1 - GPS.
GPS required.

**TOP ALTITUDE:**  
**3000**

### TAKEOFF MINIMUMS

Rwy 28L: Standard with minimum climb of 500' per NM to 513 then 380' per NM to 1400.  
 Rwy 28R: Standard with minimum climb of 500' per NM to 1300.

NOTE: Chart not to scale.

SW-2, 16 APR 2026 to 14 MAY 2026

# GNNRR THREE DEPARTURE (RNAV)