

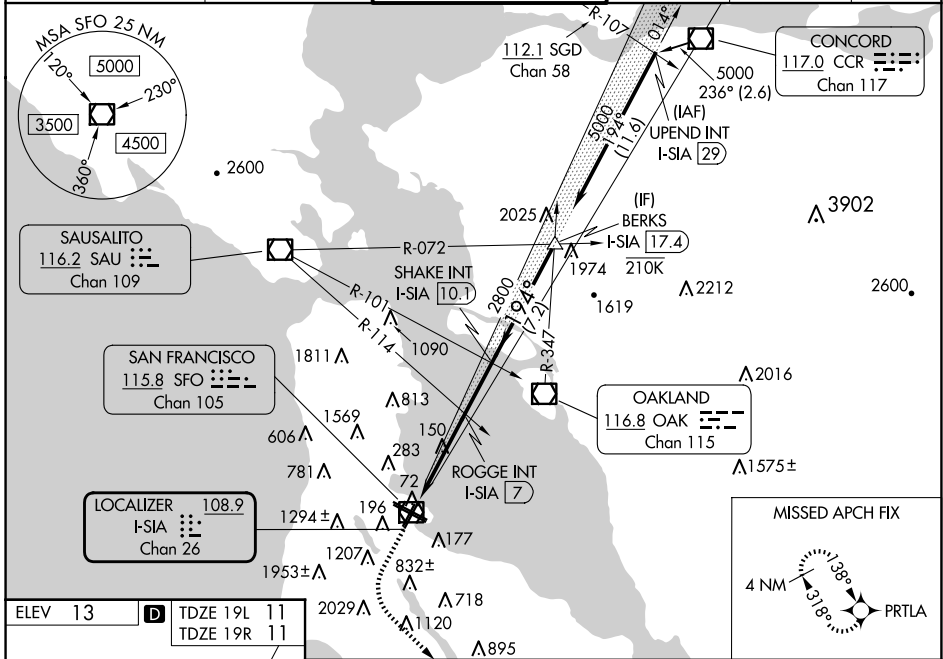
LOC/DME I-SIA <b>108.9</b> Chan <b>26</b>	APP CRS <b>194°</b>	Rwy Ldg <b>8650 7650</b> TDZE <b>11 11</b> Apt Elev <b>13 13</b>
---	------------------------	---

# ILS or LOC RWY 19L

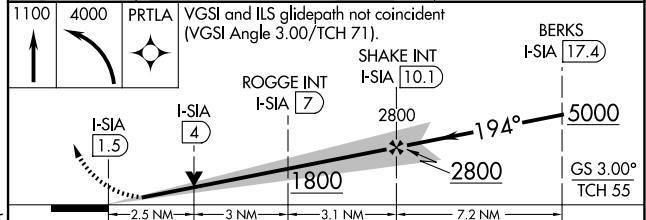
SAN FRANCISCO INTL (SFO)

RNP APCH - GPS.	MALSFS Rwy 19L	MISSED APPROACH: Climb to 1100 then climbing left turn to 4000 direct to PRTLA and hold. *Missed approach requires minimum climb of 357 feet per NM to 2000.
-----------------	-------------------	---

D-ATIS <b>113.7 115.8 118.85</b>	NORCAL APP CON <b>134.5 338.2</b>	SAN FRANCISCO TOWER <b>120.5 269.1</b>	GND CON <b>121.8</b>	CLNC DEL <b>118.2</b>	CPDLC
-------------------------------------	--------------------------------------	---	-------------------------	--------------------------	-------



ELEV 13	<b>D</b>	TDZE 19L 11 TDZE 19R 11
HIRL all Rwys TDZ/CL Rwys 19L and 28R REIL Rwys 1L, 1R and 10L		
FAF to MAP 8.6 NM		
Knots	60	90 120 150 180
Min:Sec	8:36	5:44 4:18 3:26 2:52



CATEGORY	A	B	C	D
S-ILS 19L*	300/40 289 (300-3/4)			
S-ILS 19L	774-2 763 (800-2)			
S-LOC 19L	1800-1 1/4 1789 (1800-1 1/4)	1800-1 1/2 1789 (1800-1 1/2)	1800-3 1789 (1800-3)	
ROGGE FIX MINIMUMS (DUAL VOR RECEIVERS OR DME REQUIRED)				
S-LOC 19L	880/40 869 (900-3/4)	880/55 869 (900-1)	880-2 1/2	869 (900-2 1/2)
SIDESTEP 19R	880-2 869 (900-2)		880-3 869 (900-3)	

SW-2, 16 APR 2026 to 14 MAY 2026

SW-2, 16 APR 2026 to 14 MAY 2026