

MODESTO NINE ARRIVAL

AL-375 (FAA)

SAN FRANCISCO INTL (SFO)
SAN FRANCISCO, CALIFORNIA

SW-2, 16 APR 2026 to 14 MAY 2026

ARRIVAL ROUTE DESCRIPTION

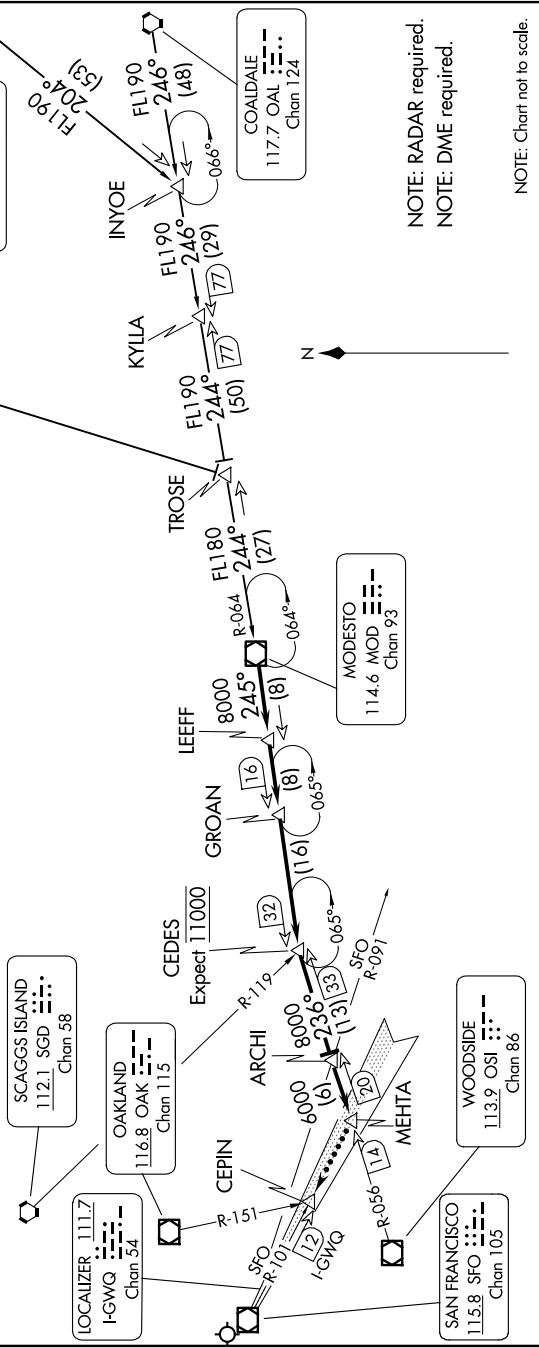
COALDALE TRANSITION [OAL.MOD9]: From over OAL VORTAC on OAL R-246 and MOD R-064 to MOD VOR/DME. Thence. . . .

MINA TRANSITION [MVA.MOD9]: From over MVA VORTAC on MVA R-204 and OAL R-246 and MOD R-064 to MOD VOR/DME. Thence. . . .

MUSTANG TRANSITION [FMG.MOD9]: From over FMG VORTAC on FMG R-182 and MOD R-064 to MOD VOR/DME. Thence. . . .

. . . . From over MOD VOR/DME on MOD R-245 to LEEFF, then on MOD R-245 to GROAN, then on MOD R-245 to CEDES, then on OSI VOR/DME R-056 to ARCHI, then on OSI R-056 to MEHTA. Expect RADAR vectors to final approach course.

LOST COMMUNICATIONS: Intercept and proceed on SFO RWY 28R localizer to CEPIN.



NOTE: RADAR required.
NOTE: DME required.

NOTE: Chart not to scale.

MODESTO NINE ARRIVAL

SAN FRANCISCO, CALIFORNIA
SAN FRANCISCO INTL (SFO)

SW-2, 16 APR 2026 to 14 MAY 2026