

(SSTIK5.SSTIK) 21224

SSTIK FIVE DEPARTURE (RNAV)

SAN FRANCISCO INTL (SFO)
SAN FRANCISCO, CALIFORNIA

AL-375 (FAA)

D-ATIS
113.7 115.8 118.85
CLNC DEL
118.2
CPDLC
GND CON
121.8
SAN FRANCISCO TOWER
120.5 269.1
NORCAL DEP CON
135.1 307.2

**TOP ALTITUDE:
FL190**

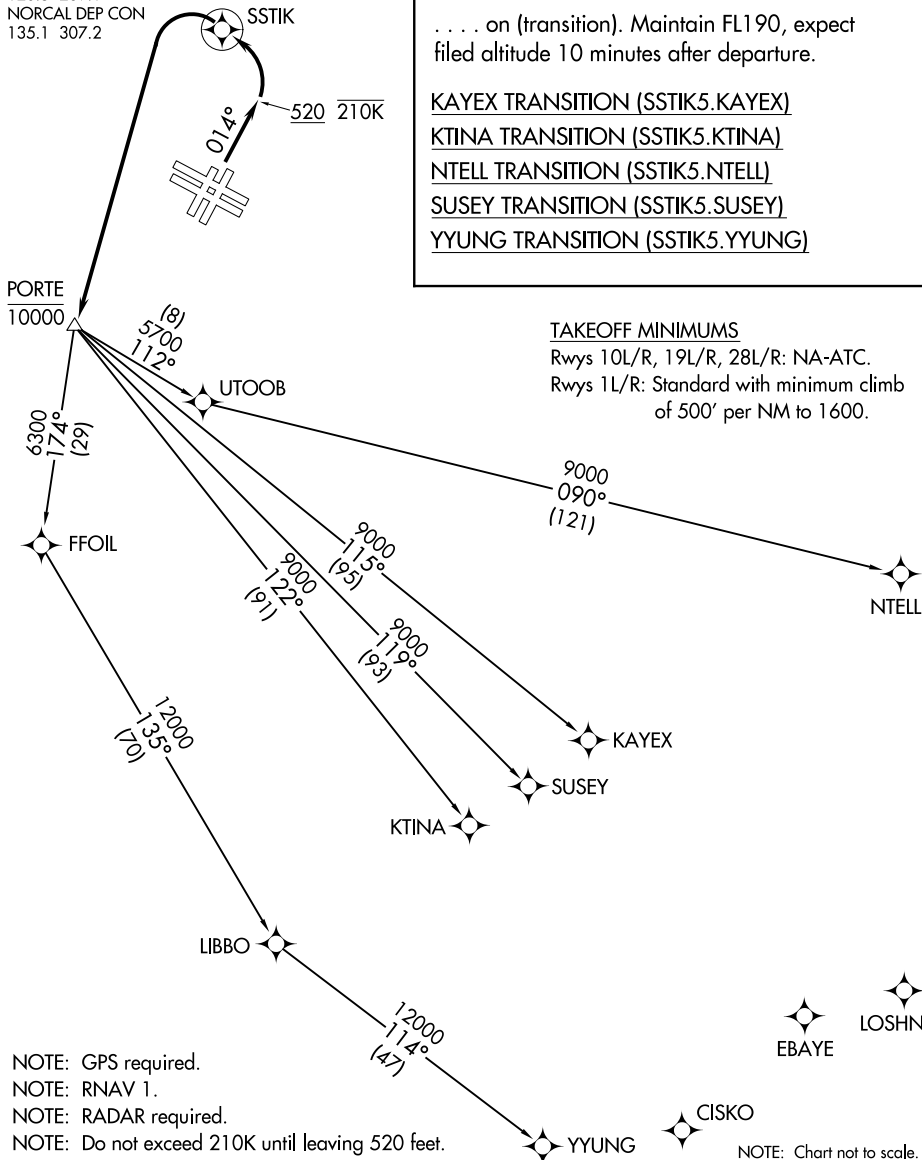
DEPARTURE ROUTE DESCRIPTION

TAKEOFF RUNWAYS 1L/R: Climb on heading 014° to 520 and at or below 210K, then climbing left turn direct SSTIK, then climbing left turn direct to cross PORTE at or below 10000. Thence. . . . on (transition). Maintain FL190, expect filed altitude 10 minutes after departure.

- KAYEX TRANSITION (SSTIK5.KAYEX)
- KTINA TRANSITION (SSTIK5.KTINA)
- NTELL TRANSITION (SSTIK5.NTELL)
- SUSEY TRANSITION (SSTIK5.SUSEY)
- YYUNG TRANSITION (SSTIK5.YYUNG)

TAKEOFF MINIMUMS

Rwys 10L/R, 19L/R, 28L/R: NA-ATC.
Rwys 1L/R: Standard with minimum climb of 500' per NM to 1600.



NOTE: GPS required.
NOTE: RNAV 1.
NOTE: RADAR required.
NOTE: Do not exceed 210K until leaving 520 feet.

SSTIK FIVE DEPARTURE (RNAV)

(SSTIK5.SSTIK) 12AUG21

SAN FRANCISCO, CALIFORNIA
SAN FRANCISCO INTL (SFO)

SW-2, 16 APR 2026 to 14 MAY 2026

SW-2, 16 APR 2026 to 14 MAY 2026