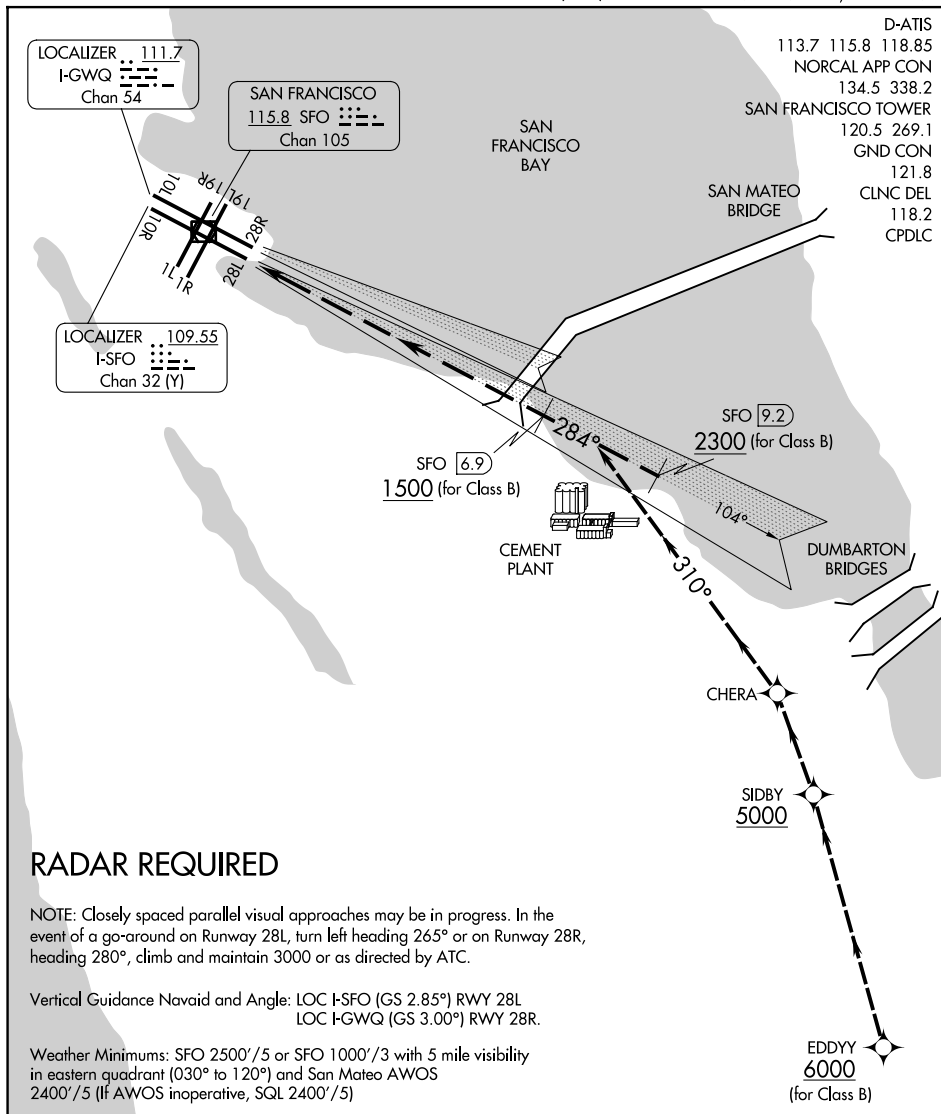


TIPP TOE VISUAL RWY 28L/R

AL-375 (FAA)

SAN FRANCISCO INTL (SFO)
SAN FRANCISCO, CALIFORNIA



- D-ATIS 113.7 115.8 118.85
- NORCAL APP CON 134.5 338.2
- SAN FRANCISCO TOWER 120.5 269.1
- GND CON 121.8
- CLNC DEL 118.2
- CPDLC

SW-2, 16 APR 2026 to 14 MAY 2026

SW-2, 16 APR 2026 to 14 MAY 2026

RADAR REQUIRED

NOTE: Closely spaced parallel visual approaches may be in progress. In the event of a go-around on Runway 28L, turn left heading 265° or on Runway 28R, heading 280°, climb and maintain 3000 or as directed by ATC.

Vertical Guidance Navaid and Angle: LOC I-SFO (GS 2.85°) RWY 28L
LOC I-GWQ (GS 3.00°) RWY 28R.

Weather Minimums: SFO 2500'/5 or SFO 1000'/3 with 5 mile visibility in eastern quadrant (030° to 120°) and San Mateo AWOS 2400'/5 (If AWOS inoperative, SQL 2400'/5)

1	2	3	4	5	6	7	8	9	10	11	12	13	14	15	16
---	---	---	---	---	---	---	---	---	----	----	----	----	----	----	----

TIPP TOE VISUAL APPROACH RUNWAY 28L/R

At/above 6000 at EDDYY, proceed to SIDBY at/above 5000, north turn at SIDBY to CHERA. Runway 28L, from CHERA 310° heading to intercept the I-SFO localizer. Runway 28R, from CHERA 310° heading to intercept the I-GWQ localizer. In the event of a go-around on Runway 28L, turn left on heading 265°. For a go-around on Runway 28R, heading 280°, climb and maintain 3000 or as directed by ATC.

TIPP TOE VISUAL RWY 28L/R

Amdt 3 24MAR22

37°37'N-122°23'W

SAN FRANCISCO, CALIFORNIA
SAN FRANCISCO INTL (SFO)