

YOSEM THREE ARRIVAL (RNAV)

AL-375 (FAA)

SAN FRANCISCO INTL (SFO)
SAN FRANCISCO, CALIFORNIA

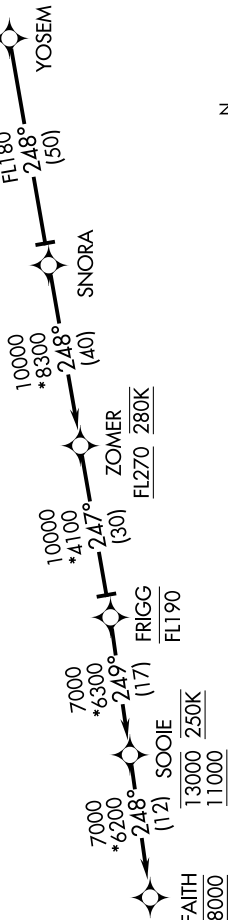
OAKLAND CENTER
134.375 281.5
NORCAL APP CON
128.325 254.3
D-ATIS
113.7 115.8 118.85
SAN FRANCISCO TOWER
120.5 269.1
GND CON
121.8



ARRIVAL ROUTE DESCRIPTION

From YOSEM on track 248° to SNORA, then on track 248° to cross ZOMER at/above FL270 and at 280K.

LANDING RUNWAYS 28L/R: From ZOMER on track 247° to cross FRIGG at/below FL190, then on track 249° to cross SOOIE between 11000 and 13000 and at 250K, then on track 248° to cross FAITH at 8000. Expect assigned instrument approach procedure, or expect RADAR vectors to final.



- NOTE: RADAR required.
- NOTE: RNAV 1.
- NOTE: DME/DME/IRU or GPS required.
- NOTE: YOSEM3 STAR ATC assigned only.
- NOTE: Chart not to scale.

SW-2, 16 APR 2026 to 14 MAY 2026

SW-2, 16 APR 2026 to 14 MAY 2026

YOSEM THREE ARRIVAL (RNAV)

SAN FRANCISCO, CALIFORNIA
SAN FRANCISCO INTL (SFO)