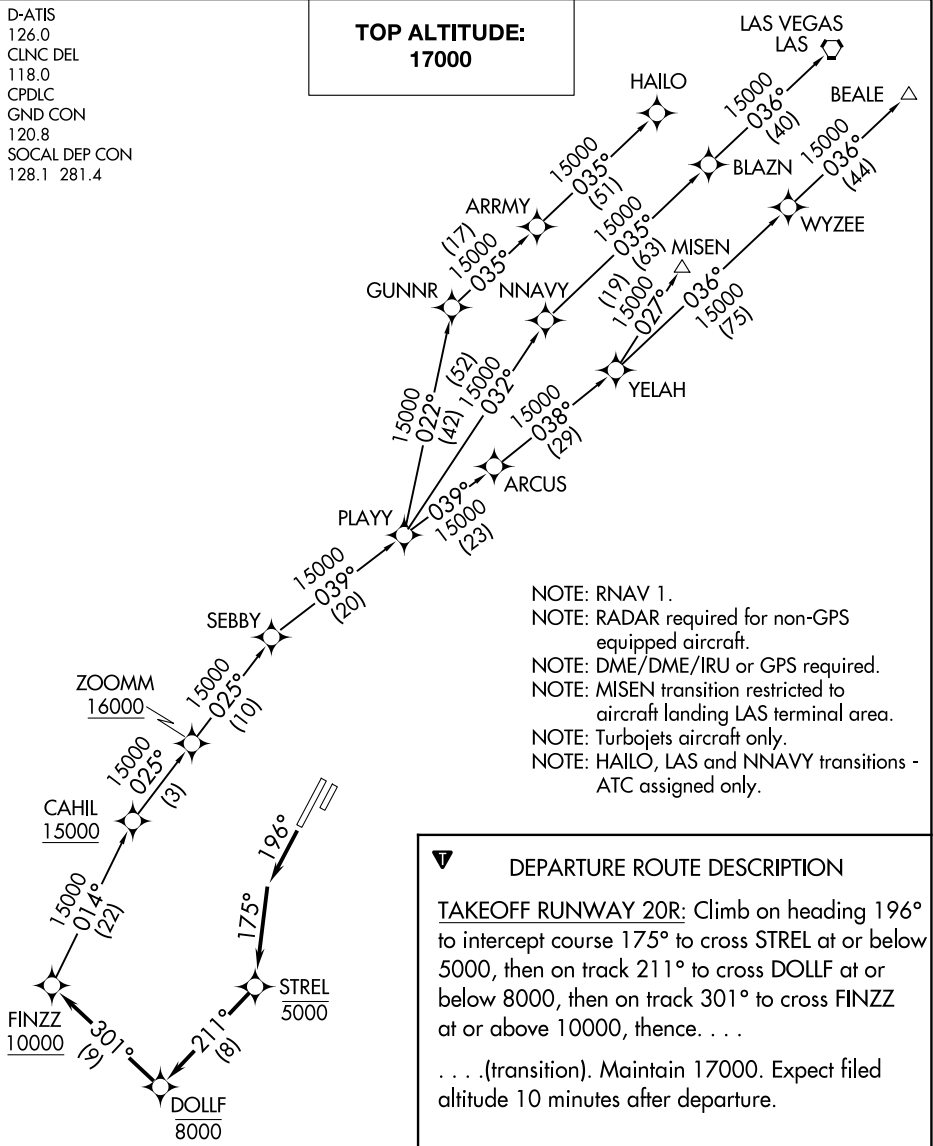


D-ATIS  
126.0  
CLNC DEL  
118.0  
CPDLC  
GND CON  
120.8  
SOCAL DEP CON  
128.1 281.4

**TOP ALTITUDE:  
17000**



- NOTE: RNAV 1.
- NOTE: RADAR required for non-GPS equipped aircraft.
- NOTE: DME/DME/IRU or GPS required.
- NOTE: MISEN transition restricted to aircraft landing LAS terminal area.
- NOTE: Turbojets aircraft only.
- NOTE: HAILO, LAS and NNAVY transitions - ATC assigned only.

**DEPARTURE ROUTE DESCRIPTION**

**TAKEOFF RUNWAY 20R:** Climb on heading 196° to intercept course 175° to cross STREL at or below 5000, then on track 211° to cross DOLLF at or below 8000, then on track 301° to cross FINZZ at or above 10000, thence. . . .

. . . (transition). Maintain 17000. Expect filed altitude 10 minutes after departure.

- BEALE TRANSITION (FINZZ3.BEALE)
- HAILO TRANSITION (FINZZ3.HAILO)
- LAS VEGAS TRANSITION (FINZZ3.LAS)
- MISEN TRANSITION (FINZZ3.MISEN)
- NNAVY TRANSITION (FINZZ3.NNAVY)

**TAKEOFF MINIMUMS**

Rwy 20R: Standard with a minimum climb of 320' per NM to 560.

NOTE: Chart not to scale.