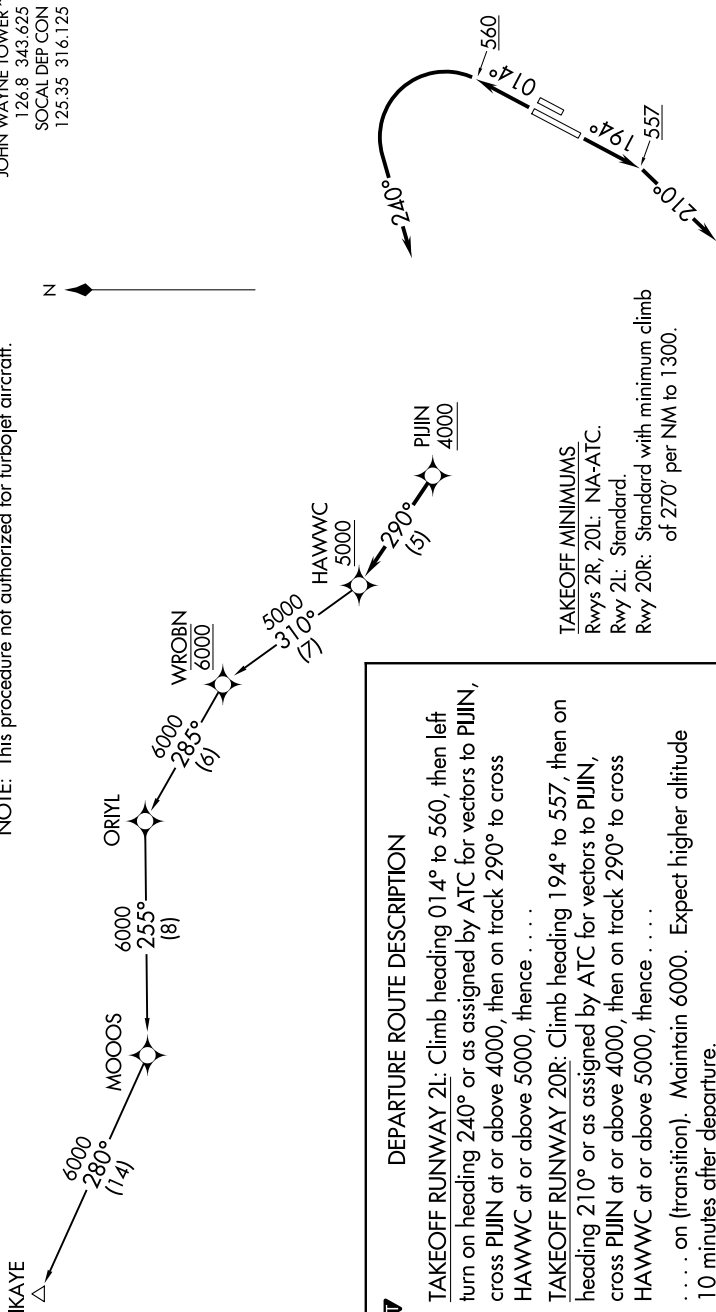


D-ATIS 126.0  
 CLNC DEL 118.0  
 CPDLC  
 GND CON 120.8  
 JOHN WAYNE TOWER\* 126.8 343.625  
 SOCAL DEP CON 125.35 316.125

NOTE: RADAR required.  
 NOTE: RNAV 1.  
 NOTE: DME/DME/IRU or GPS required.  
 NOTE: This procedure not authorized for turbojet aircraft.



**TOP ALTITUDE:**  
6000

**DEPARTURE ROUTE DESCRIPTION**

**TAKEOFF RUNWAY 2L:** Climb heading 014° to 560, then left turn on heading 240° or as assigned by ATC for vectors to PIJIN, cross PIJIN at or above 4000, then on track 290° to cross HAWWC at or above 5000, thence . . . .

**TAKEOFF RUNWAY 20R:** Climb heading 194°, then on heading 210° or as assigned by ATC for vectors to PIJIN, cross PIJIN at or above 4000, then on track 290° to cross HAWWC at or above 5000, thence . . . .

. . . . on (transition). Maintain 6000. Expect higher altitude 10 minutes after departure.

**TAKEOFF MINIMUMS**  
 Rwy 2R, 20L: NA-ATC.  
 Rwy 2L: Standard.  
 Rwy 20R: Standard with minimum climb of 270' per NM to 1300.

NOTE: Chart not to scale.