

HHERO THREE DEPARTURE (RNAV) AL-377 (FAA)

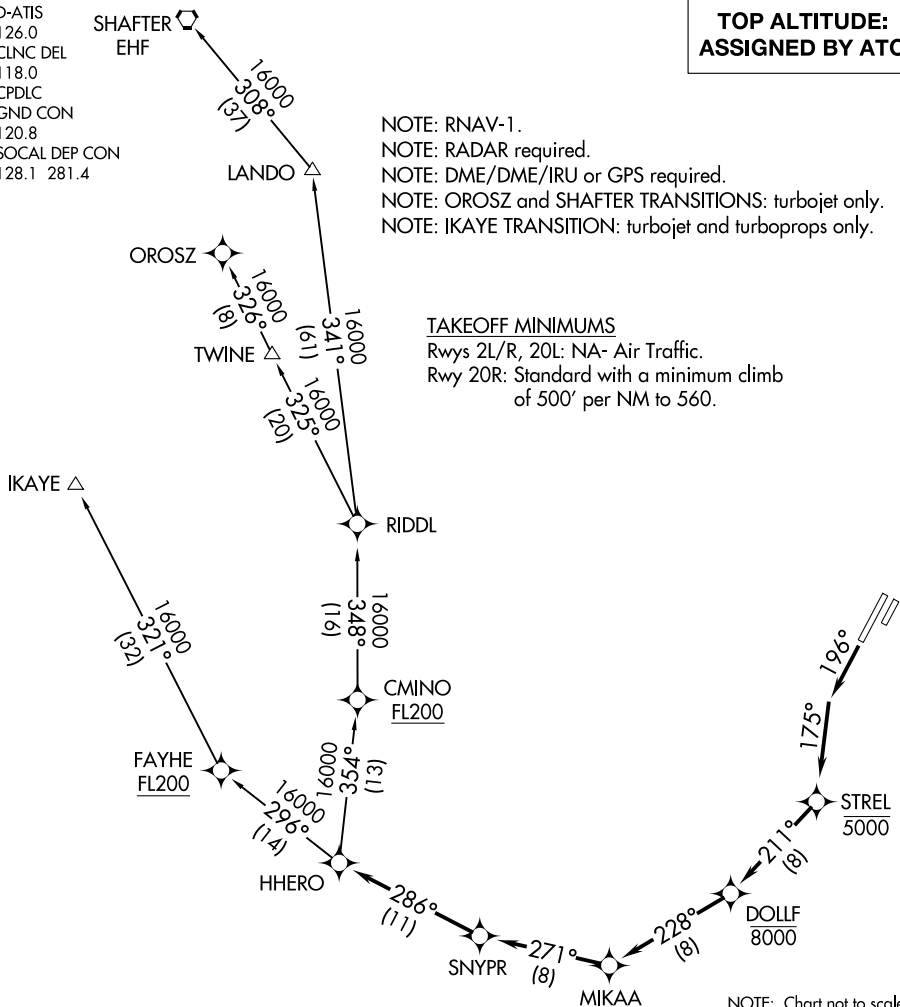
D-ATIS
126.0
CLNC DEL
118.0
CPDLC
GND CON
120.8
SOCAL DEP CON
128.1 281.4

**TOP ALTITUDE:
ASSIGNED BY ATC**

NOTE: RNAV-1.
NOTE: RADAR required.
NOTE: DME/DME/IRU or GPS required.
NOTE: OROSZ and SHAFTER TRANSITIONS: turbojet only.
NOTE: IKAYE TRANSITION: turbojet and turboprops only.

TAKEOFF MINIMUMS

Rwys 2L/R, 20L: NA- Air Traffic.
Rwy 20R: Standard with a minimum climb of 500' per NM to 560.



NOTE: Chart not to scale.

SW-3, 16 APR 2026 to 14 MAY 2026

SW-3, 16 APR 2026 to 14 MAY 2026

DEPARTURE ROUTE DESCRIPTION

TAKEOFF RUNWAY 20R: Climb heading 196° to intercept course 175° to cross STREL at or below 5000, then on track 211° to cross DOLLF at or below 8000, then on depicted route to HHERO, thence. . . .

. . . .(transition). Maintain altitude assigned by ATC. Expect filed altitude 10 minutes after departure.

IKAYE TRANSITION (HHERO3.IKAYE)

OROSZ TRANSITION (HHERO3.OROSZ)

SHAFTER TRANSITION (HHERO3.EHF)

HHERO THREE DEPARTURE (RNAV)

(HHERO3.HHERO) 19JUL18