

LOC/DME I-SNA <b>111.75</b> Chan <b>54(Y)</b>	APP CRS <b>196°</b>	Rwy Ldg TDZE Apt Elev	<b>5700</b> <b>54</b> <b>56</b>
---	------------------------	-----------------------------	---------------------------------------

# ILS or LOC RWY 20R

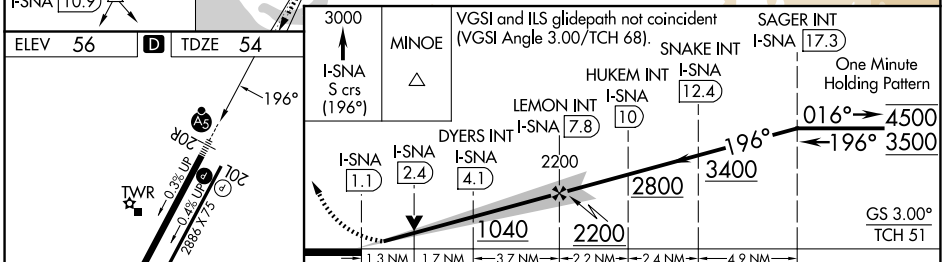
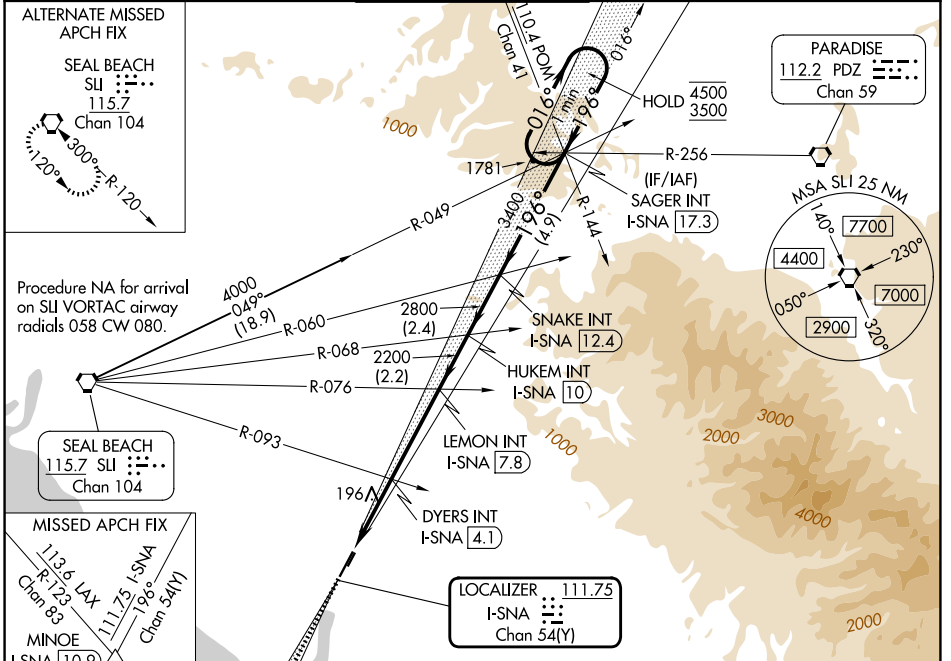
JOHN WAYNE/ORANGE COUNTY (SNA)

**⚠** Circling Rwy 20L NA at night.  
\* RVR 1800 authorized with the use of FD or AP or HUD to DA.

**MALSR**

**MISSED APPROACH:** Climb to 3000 on I-SNA LOC south course (196°) to MINOE INT/I-SNA 10.9 DME.

D-ATIS <b>126.0</b>	SOCAL APP CON <b>121.3 263.1</b>	<b>JOHN WAYNE TOWER*</b> <b>126.8 (CTAF) 0 343.625</b>	GND CON <b>120.8</b>	UNICOM <b>122.95</b>
------------------------	-------------------------------------	---	-------------------------	-------------------------



ELEV 56	<b>D</b>	TDZE 54	3000	MINOE	VGSI and ILS glidepath not coincident (VGSI Angle 3.00°/TCH 68).	SNAKE INT I-SNA 17.3	SAGER INT I-SNA 17.3
I-SNA S crs (196°)		HUKEM INT I-SNA 12.4		LEMON INT I-SNA 7.8		One Minute Holding Pattern	
I-SNA 1.1		I-SNA 2.4		I-SNA 4.1		GS 3.00° TCH 51	
CATEGORY A		CATEGORY B		CATEGORY C		CATEGORY D	
S-ILS 20R*		255/24		201 (200-1/2)			
S-LOC 20R		1040/40 986 (1000-3/4)		1040/55 986 (1000-1)		1040-2 1/2 986 (1000-2 1/2)	
CIRCLING		1040-1 1/4 984 (1000-1 1/4)		1040-1 1/2 984 (1000-1 1/2)		1040-3 984 (1000-3)	
						1124 (1200-3)	
DYERS FIX MINIMUMS (DUAL VOR RECEIVERS OR DME REQUIRED)							
S-LOC 20R		460/24		406 (500-1/2)		460/40 406 (500-3/4)	
CIRCLING		640-1		584 (600-1)		840-2 1/4 784 (800-2 1/4)	
						1124 (1200-3)	

SW-3, 16 APR 2026 to 14 MAY 2026

SW-3, 16 APR 2026 to 14 MAY 2026