

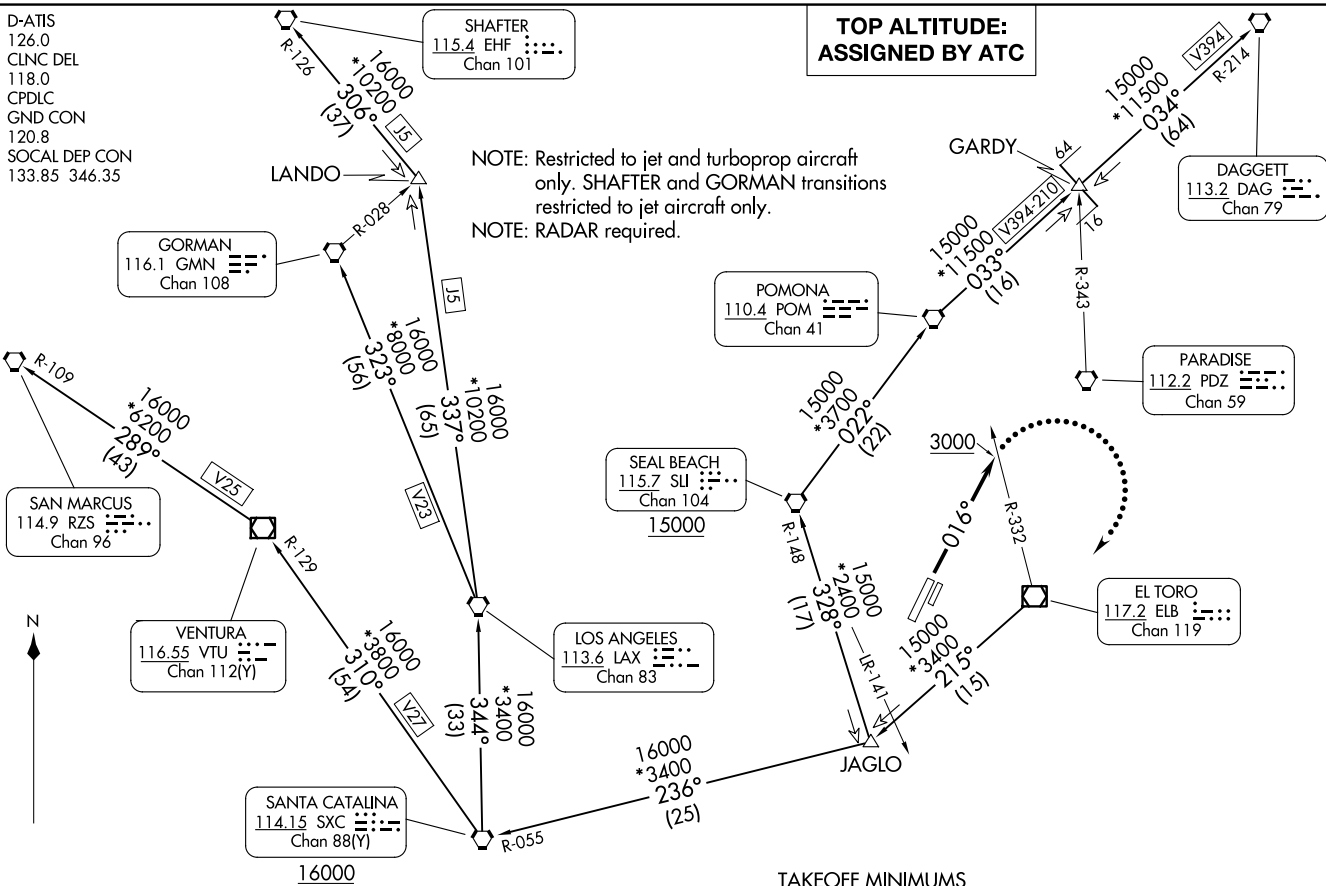
IRVINE FIVE DEPARTURE
(IRV5, IRV) 28FEB19

JOHN WAYNE/ORANGE COUNTY (SN/A)
SANTA ANA, CALIFORNIA

D-ATIS
126.0
CLNC DEL
118.0
CPDLC
GND CON
120.8
SOCAL DEP CON
133.85 346.35

**TOP ALTITUDE:
ASSIGNED BY ATC**

NOTE: Restricted to jet and turboprop aircraft only. SHAFER and GORMAN transitions restricted to jet aircraft only.
NOTE: RADAR required.



TAKEOFF MINIMUMS

Rwy 2L, Standard with minimum climb of 385' per NM to 5600.

(CONTINUED ON FOLLOWING PAGE)

NOTE: Chart not to scale.

IRVINE FIVE DEPARTURE
(IRV5, IRV) 23334

AL-377 (FAA)

JOHN WAYNE/ORANGE COUNTY (SN/A)
SANTA ANA, CALIFORNIA



DEPARTURE ROUTE DESCRIPTION

TAKEOFF RUNWAY 2L: Climb heading 016° to 3000, continue climb to assigned altitude on assigned heading for RADAR vectors to ELB VOR/DME R-215.

Thence

. . . . on (transition) or assigned route. Maintain ATC assigned altitude, expect filed altitude ten minutes after departure.

LOST COMMUNICATIONS: If not in contact with departure control by ELB R-332, turn right direct ELB VOR/DME, climb to 7000 and proceed via assigned transition or route. Climb to filed altitude ten minutes after departure.

DAGGETT TRANSITION (IRV5.DAG): From over ELB VOR/DME on ELB R-215 and SLI R-148 to SLI VORTAC, then on SLI R-022 to POM VORTAC, then on POM R-033 and DAG R-214 to DAG VORTAC.

GORMAN TRANSITION (IRV5.GMN): From over ELB VOR/DME on ELB R-215 and SXC R-055 to SXC VORTAC, then on SXC R-344 to LAX VORTAC, then on LAX R-323 to GMN VORTAC.

SAN MARCUS TRANSITION (IRV5.RZS): From over ELB VOR/DME on ELB R-215 and SXC R-055 to SXC VORTAC, then on SXC R-310 and VTU R-129 to VTU VOR/DME, then on VTU R-289 and RZS R-109 to RZS VORTAC.

SEAL BEACH TRANSITION (IRV5.SLI): From over ELB VOR/DME on ELB R-215 and on SLI R-148 to SLI VORTAC.

SHAFTER TRANSITION (IRV5.EHF): From over ELB VOR/DME on ELB R-215 and SXC R-055 to SXC VORTAC, then on SXC R-344 to LAX VORTAC, then on LAX R-337 and EHF R-126 to EHF VORTAC.

SW-3, 16 APR 2026 to 14 MAY 2026

SW-3, 16 APR 2026 to 14 MAY 2026