


APP CRS	Rwy Ldg	5700
196°	TDZE	54
	Apt Elev	56

RNAV (RNP) Z RWY 20R

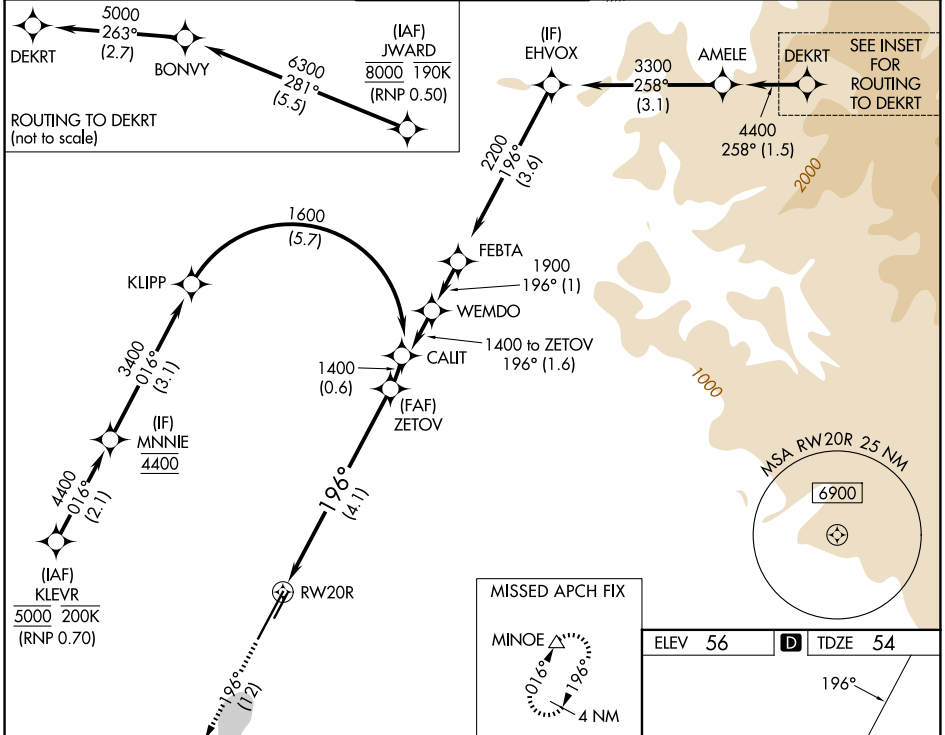
JOHN WAYNE/ORANGE COUNTY (SNA)

RNP AR APCH - GPS. Authorization required. From JWARD: min RNP 0.50. From KLEVR, RF, min RNP 0.70.

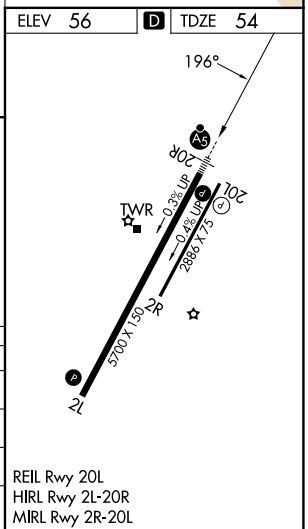
For uncompensated Baro-VNAV systems, procedure NA below 5°C or above 54°C.

MALSR  MISSED APPROACH: Climb to 3000 on track 196° to MINOE and hold, continue climb-in-hold.

D-ATIS 126.0	SOCAL APP CON 121.3 263.1	JOHN WAYNE TOWER ★ 126.8 (CTAF) 343.625	GND CON 120.8	UNICOM 122.95
------------------------	-------------------------------------	---	-------------------------	-------------------------



3000 ↑ fr 196°	MINOE △	VGSI and RNAV glidepath not coincident (VGSI Angle 3.00/TCH 68). See planview for multiple IF locations.	ZETOV 1400
RW20R		196°	1400
		4.1 NM	GP 3.00° TCH 51
CATEGORY	A	B	C
RNP 0.11 DA		376/26	322 (400-½)
RNP 0.15 DA		562/55	508 (600-1)
RNP 0.30 DA		618-1¼	564 (600-1¼)
AUTHORIZATION REQUIRED			



SW-3, 16 APR 2026 to 14 MAY 2026

SW-3, 16 APR 2026 to 14 MAY 2026