

APP CRS	Rwy Ldg	5700
016°	TDZE	56
	Apt Elev	56

RNAV (RNP) Z RWY 2L

JOHN WAYNE/ORANGE COUNTY (SNA)

RNP AR APCH - GPS. Authorization required. From OSOYI: RF.

▼ For uncompensated Baro-VNAV systems, procedure NA below 5°C or above 54°C.

MISSED APPROACH: Climb to 800 then climbing left turn to 2600 direct SLI VORTAC and hold.

D-ATIS 126.0	SOCAL APP CON 121.3 263.1	JOHN WAYNE TOWER * 126.8 (CTAF) 0 343.625	GND CON 120.8	UNICOM 122.95
------------------------	-------------------------------------	---	-------------------------	-------------------------



Procedure NA for arrivals at MINOE on V25 southeast bound.

VGSI and RNAV glidepath not coincident (VGSI Angle 3.00/TCH 75).

800 2600 SLI

NEWPO 1600

1600 016°

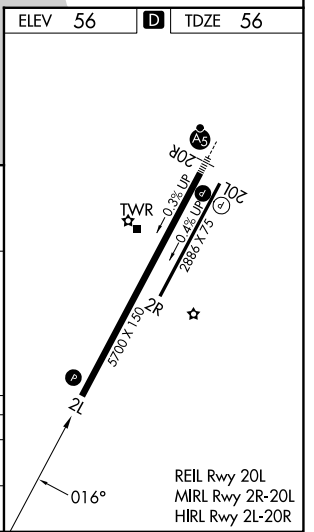
GP 3.00° TCH 55

See planview for multiple IF locations.

4.7 NM

CATEGORY	A	B	C	D
RNP 0.30 DA		403-1 1/8	347 (400-1 1/8)	

AUTHORIZATION REQUIRED



SW-3, 16 APR 2026 to 14 MAY 2026

SW-3, 16 APR 2026 to 14 MAY 2026