

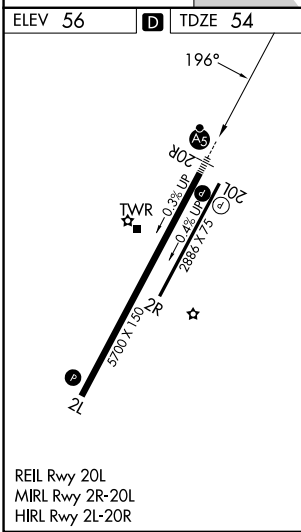
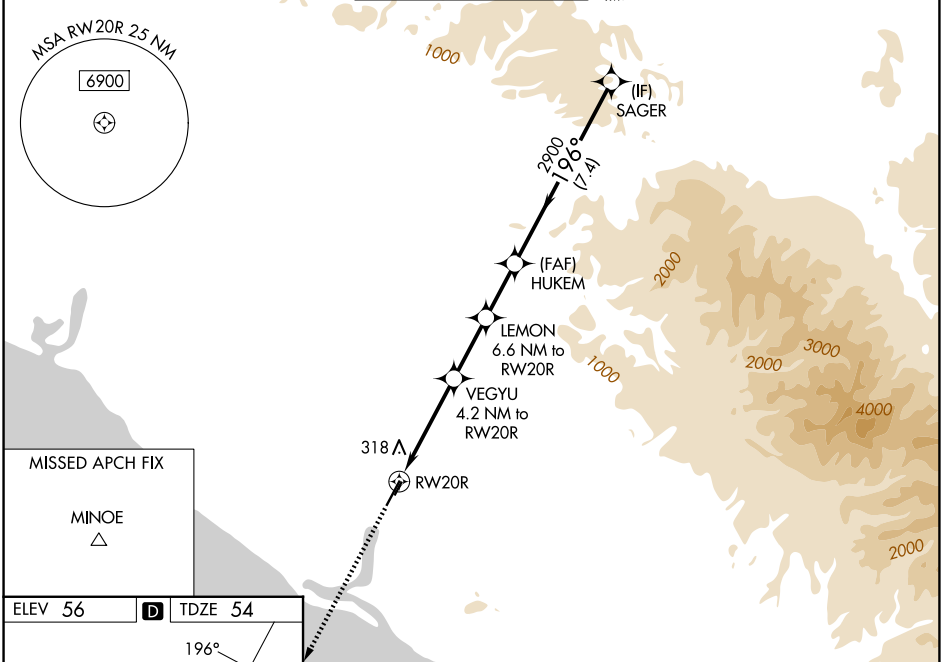
WAAS CH 99502 W20A	APP CRS 196°	Rwy Ldg 5700 TDZE 54 Apt Elev 56
--	------------------------	---

RNAV (GPS) Y RWY 20R

JOHN WAYNE/ORANGE COUNTY (SNA)

RNP APCH - GPS. RADAR required.	MALSR 	MISSED APPROACH: Climb to 3000 direct MINOE.
<p>⚠ For uncompensated Baro-VNAV systems, LNAV/VNAV NA below 5°C or above 54°C. Circling Rwy 20L NA at night. For inop ALS increase LNAV/VNAV visibility to 1 3/8 SM. *RVR 1800 authorized with use of FD or AP or HUD to DA.</p>		

D-ATIS 126.0	SOCAL APP CON 121.3 263.1	JOHN WAYNE TOWER ★ 126.8 (CTAF) 0 343.625	GND CON 120.8	UNICOM 122.95
------------------------	-------------------------------------	---	-------------------------	-------------------------



ELEV 56	D	TDZE 54			
MISSED APCH FIX MINOE △	3000	MINOE △	VGSI and RNAV glidepath not coincident (VGSI Angle 3.00/TCH 68).	HUKEM 2900	SAGER 3500
	1.5 NM	2.7 NM	2.5 NM	2.2 NM	7.4 NM
	1.5 NM to RWY 20R	2.7 NM to RWY 20R	2.5 NM to RWY 20R	2.2 NM to RWY 20R	7.4 NM to RWY 20R
	1420	2200	2900	3500	
					GP 3.00° TCH 51

CATEGORY	A	B	C	D
LPV DA*	255/24		201 (200-1/2)	
LNAV/VNAV DA	516/50		462 (500-1)	
LNAV MDA	580/24	526 (600-1/2)	580/55	526 (600-1)
CIRCLING	640-1	584 (600-1)	840-2 1/4 784 (800-2 1/4)	1180-3 1124 (1200-3)

SW-3, 16 APR 2026 to 14 MAY 2026

SW-3, 16 APR 2026 to 14 MAY 2026