


LOC/DME I-SBA 110.3 Chan 40	APP CRS 075°	Rwy Ldg TDZE 13 Apt Elev 14	6052
--	------------------------	---	-------------

ILS or LOC RWY 7

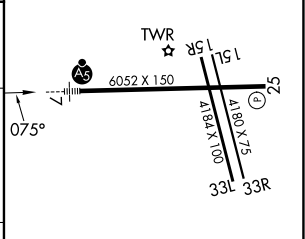
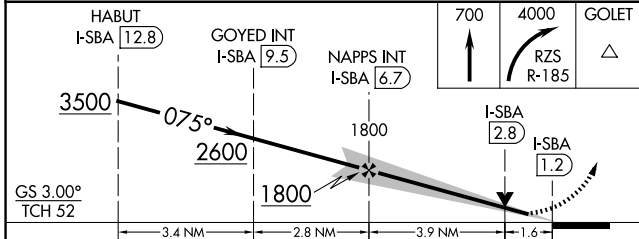
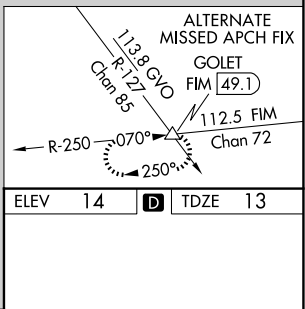
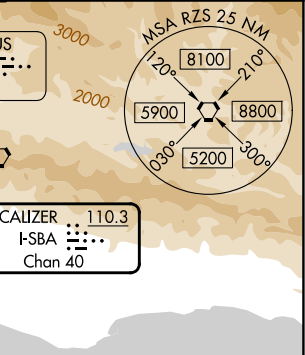
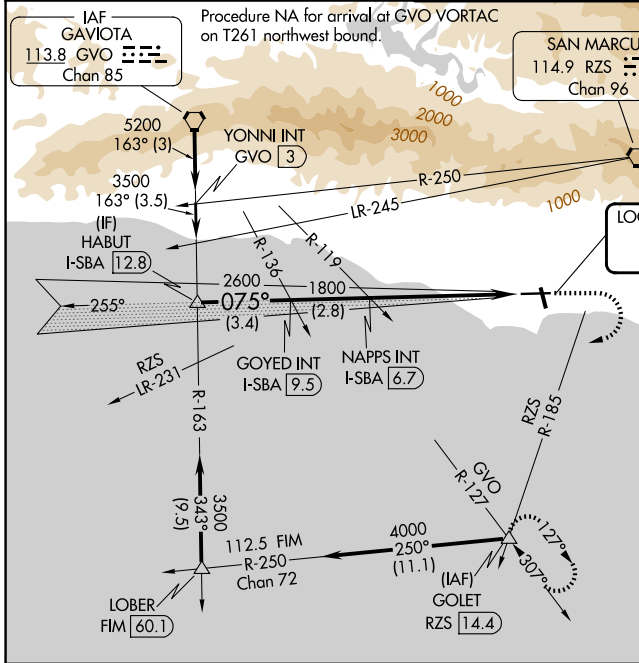
SANTA BARBARA MUNI (SBA)

⚠ VDP NA when using OXR altimeter setting. Circling Rwy 15L/R and 33L/R NA at night. When local altimeter setting not received, use OXR altimeter setting: increase DA to 296 feet; increase all MDAs 100 feet and S-LOC 7 visibility Cats C and D to 1 3/8 SM, Circling Cat A visibility to 1 1/4 SM and Circling visibility Cat C to 2 3/4 SM. For inop ALS, when using OXR altimeter setting, increase S-ILS 7 all Cats visibility to RVR 4500 and S-LOC 7 Cats C and D visibility to 1 7/8 SM. Circling NA for Cats C and D north of Rwy 7-25.
*RVR 1800 authorized with use of FD or AP or HUD to DA (NA when using OXR altimeter setting).

MALSR


MISSED APPROACH:
Climb to 700 then climbing right turn to 4000 on RZS VORTAC R-185 to GOLET INT/RZS 14.4 DME and hold, continue climb-in-hold to 4000.

ATIS 132.65	SANTA BARBARA APP CON* 120.55 319.15 (151°-329°) 125.4 291.1 (330°-150°)	SANTA BARBARA TOWER* 119.7 (CTAF) 0 254.35	GND CON 121.7	UNICOM 122.95
-----------------------	--	---	-------------------------	-------------------------



CATEGORY	A	B	C	D
S-ILS 7*	213/24		200 (200-1/2)	
S-LOC 7	560/24	547 (600-1/2)	560/60	547 (600-1 1/4)
CIRCLING	800-1 786 (800-1)	840-1 1/4 826 (900-1 1/4)	840-2 1/2 826 (900-2 1/2)	1000-3 986 (1000-3)

HIRL Rwy 7-25 **①**
MIRL Rwy 15R-33L **①**
REIL Rws 15R and 25 **①**

FAF to MAP 5.5 NM

Knots	60	90	120	150	180
Min:Sec	5:30	3:40	2:45	2:12	1:50

SW-3, 16 APR 2026 to 14 MAY 2026

SW-3, 16 APR 2026 to 14 MAY 2026