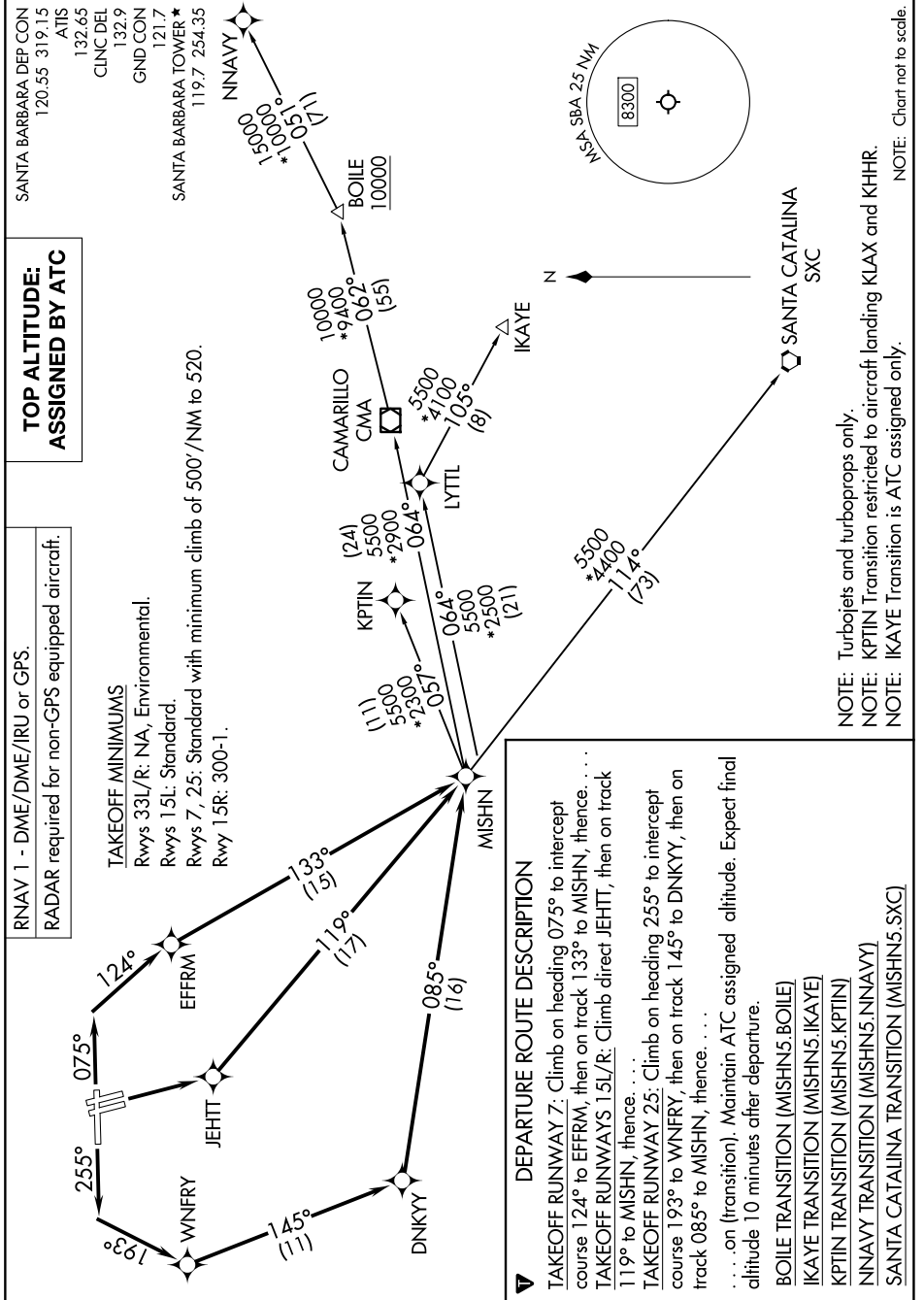


MISHN FIVE DEPARTURE (RNAV)

AL-378 (FAA)

SANTA BARBARA MUNI (SBA)
SANTA BARBARA, CALIFORNIA

SW-3, 16 APR 2026 to 14 MAY 2026



MISHN FIVE DEPARTURE (RNAV)

SANTA BARBARA, CALIFORNIA
SANTA BARBARA MUNI (SBA)

SW-3, 16 APR 2026 to 14 MAY 2026

NOTE: Chart not to scale.

NOTE: Turbojets and turboprops only.
NOTE: KPTIN Transition restricted to aircraft landing KJAX and KXHR.
NOTE: IKAYE Transition is ATC assigned only.