

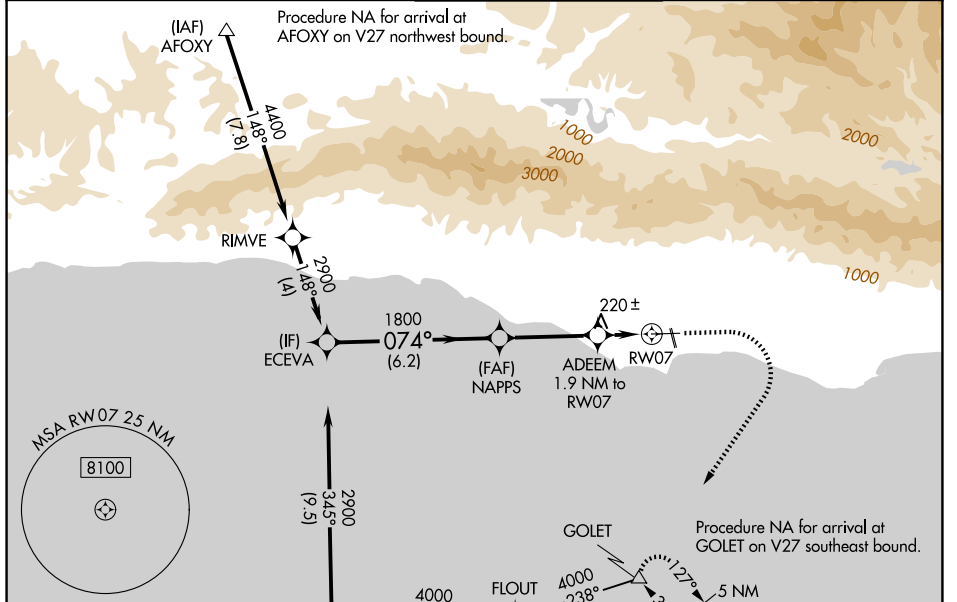
WAAS CH <b>78306</b> <b>W07A</b>	APP CRS <b>074°</b>	Rwy Ldg TDZE Apt Elev	<b>6052</b> <b>13</b> <b>14</b>
--	------------------------	-----------------------------	---------------------------------------

# RNAV (GPS) RWY 7

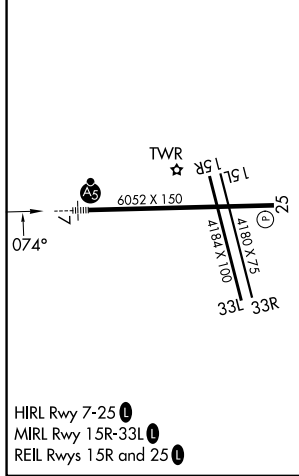
SANTA BARBARA MUNI (SBA)

RNP APCH - GPS.		MALSRL	MISSED APPROACH: Climb to 700 then climbing right turn to 4000 direct GOLET and hold, continue climb-in-hold to 4000.
<p>▼ For uncompensated Baro-VNAV systems, LNAV/VNAV NA below 2°C or above 54°C. Circling Rwy 15L/R and 33L/R NA at night. Circling NA for Cats C and D north of Rwy 7-25. For inop ALS, increase LNAV/VNAV all Cats visibility to 1½ SM and LNAV Cats C and D increase visibility to 1⅓ SM.</p>			

ATIS <b>132.65</b>	SANTA BARBARA APP CON* <b>120.55 319.15</b> (151°-329°) <b>125.4 291.1</b> (330°-150°)	SANTA BARBARA TOWER* <b>119.7</b> (CTAF) <b>0 254.35</b>	GND CON <b>121.7</b>	UNICOM <b>122.95</b>
-----------------------	--	---	-------------------------	-------------------------



ELEV 14	<b>D</b>	TDZE 13
---------	----------	---------



	ECEVA	NAPPS	ADEEM	GOLET
	2900	1800	1.9 NM to RW07	700 4000 GOLET
	074°	1800	1.3 NM to RW07	
	6.2 NM	3.5 NM	0.6	1.3 NM
CATEGORY	A	B	C	D
LPV DA		263/24	250 (300-½)	
LNAV/VNAV DA		480/50	467 (500-1)	
LNAV MDA	480/24	467 (500-½)	480/50	467 (500-1)
CIRCLING	700-1 686 (700-1)	760-1 746 (800-1)	760-2¼ 746 (800-2¼)	900-3 886 (900-3)

SW-3, 16 APR 2026 to 14 MAY 2026

SW-3, 16 APR 2026 to 14 MAY 2026