

VORTAC GVO 113.8 Chan 85	APP CRS 280°	Rwy Ldg 6052 TDZE 14 Apt Elev 14
--	------------------------	---

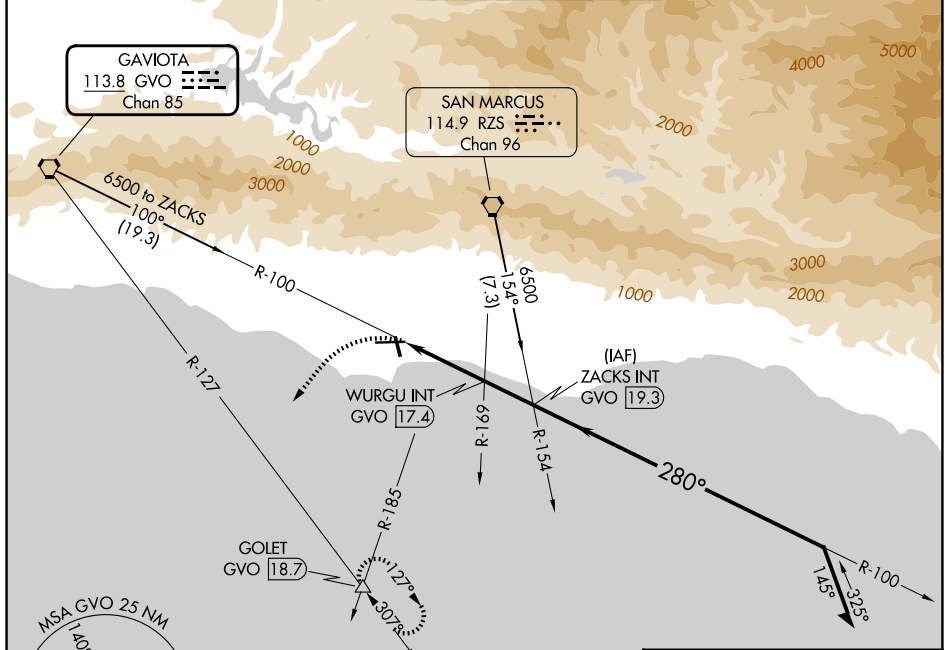
VOR RWY 25

SANTA BARBARA MUNI (SBA)

⚠ Circling Rwy 15L/R and 33L/R NA at night.
⚠ Rwy 25 helicopter visibility reduction below 1 SM NA.
 Circling NA for Cats C and D north of Rwy 7-25.

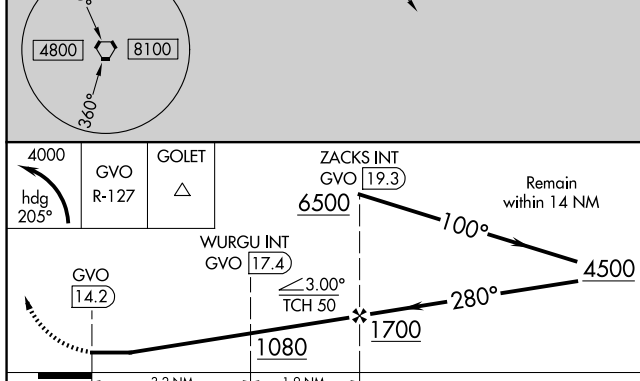
MISSED APPROACH: Climbing left turn to 4000 on heading 205° and GVO VORTAC R-127 to GOLET INT/18.7 DME and hold, continue climb-in-hold to 4000.

ATIS 132.65	SANTA BARBARA APP CON * 120.55 319.15 (151°-329°) 125.4 291.1 (330°-150°)	SANTA BARBARA TOWER * 119.7 (CTAF) 254.35	GND CON 121.7	UNICOM 122.95
-----------------------	---	--	-------------------------	-------------------------

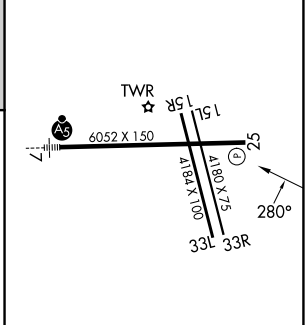


SW-3, 16 APR 2026 to 14 MAY 2026

SW-3, 16 APR 2026 to 14 MAY 2026



ELEV 14	D	TDZE 14
---------	----------	---------



CATEGORY	A	B	C	D
S-25	920-1¼ 906 (1000-1¼)		920-2½ 906 (1000-2½)	
CIRCLING	920-1¼ 906 (1000-1¼)		920-2¾ 906 (1000-2¾)	920-3 906 (1000-3)

HIRL Rwy 7-25 **Ⓛ**
 MIRL Rwy 15R-33L **Ⓛ**
 REIL Rws 15R and 25 **Ⓛ**

FAF to MAP 5.1 NM

Knots	60	90	120	150	180
Min:Sec	5:06	3:24	2:33	2:02	1:42