

LOC/DME I-SMX 108.9 Chan 26	APP CRS 300°	Rwy Ldg TDZE N/A N/A	Apt Elev 261
--	------------------------	----------------------------	------------------------

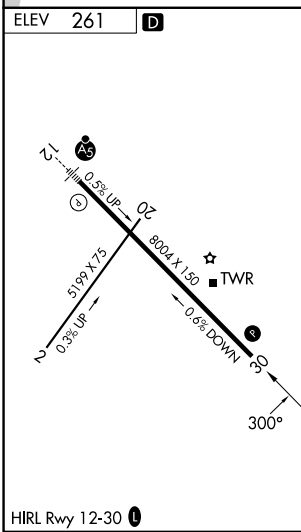
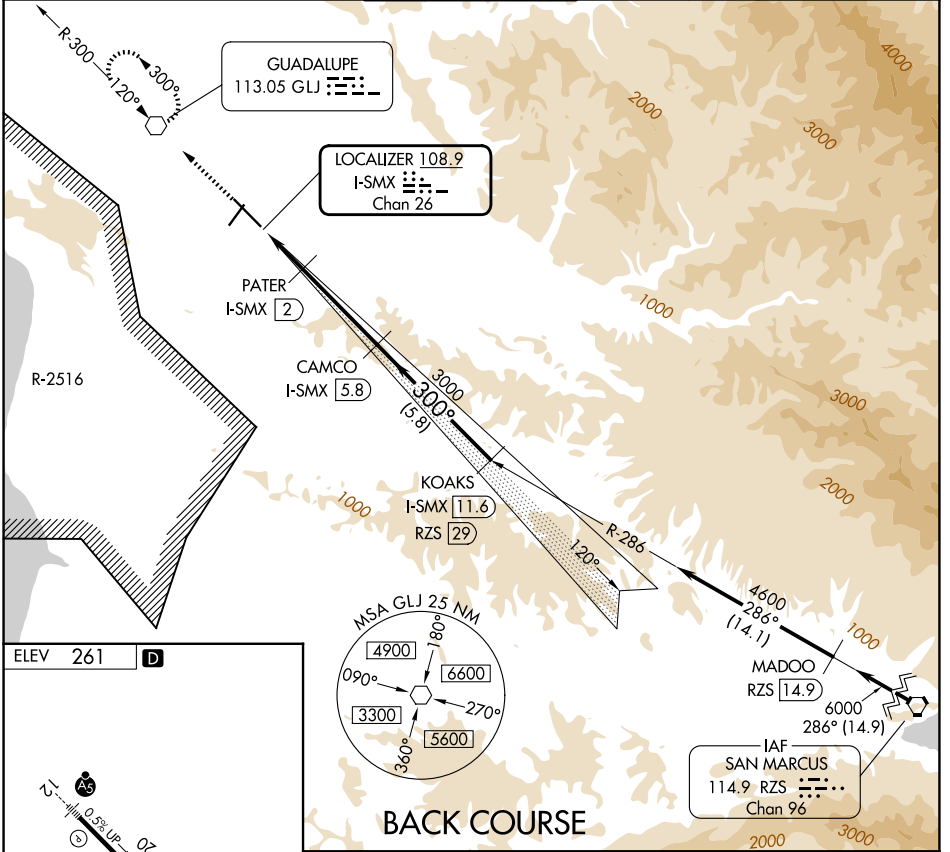
LOC/DME BC-A

SANTA MARIA PUB/CAPT G ALLAN HANCOCK FLD (SMX)

⚠ Circling to Rwy 2 NA at night. Helicopter visibility reduction below 1 SM NA. When local altimeter setting not received, use San Luis Obispo altimeter setting and increase all MDA 60 feet.

MISSED APPROACH: Climb to 2100 direct GLJ VOR and hold.

ATIS 121.15	SANTA BARBARA APP CON* 124.15 327.8	SANTA MARIA TOWER* 118.3 (CTAF) 239.25	GND CON 121.9	UNICOM 122.95
-----------------------	---	---	-------------------------	-------------------------



SANTA MARIA, CALIFORNIA
Amdt 10F 24FEB22

SANTA MARIA PUB/CAPT G ALLAN HANCOCK FLD (SMX)
34°54'N-120°27'W

LOC/DME BC-A

CATEGORY	A		B	C	D
	1100-1¼		839 (900-1¼)	1420-3	1540-3
CIRCLING				1159 (1200-3)	1279 (1300-3)

SW-3, 16 APR 2026 to 14 MAY 2026

SW-3, 16 APR 2026 to 14 MAY 2026