

APP CRS	Rwy Ldg	<b>8004</b>
<b>316°</b>	TDZE	<b>261</b>
	Apt Elev	<b>261</b>

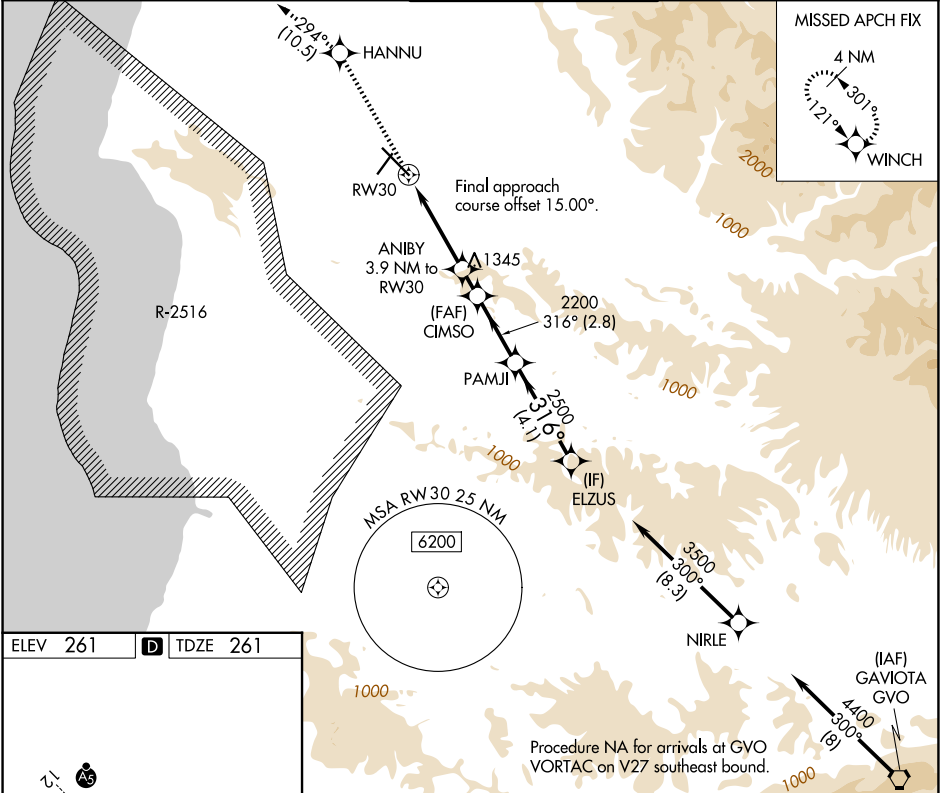
# RNAV (GPS) RWY 30

SANTA MARIA PUB/CAPT G ALLAN HANCOCK FLD (SMX)

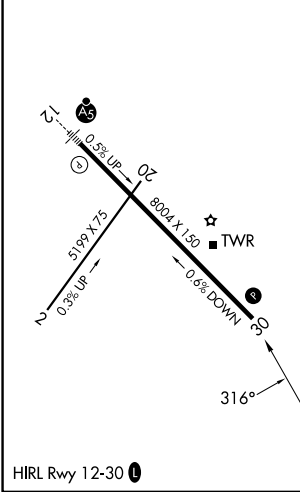
**⚠** DME/DME RNP-0.3 NA. When local altimeter setting not received, use San Luis Obispo County Rgnl altimeter setting and increase all MDA 60 feet. Rwy 30 helicopter visibility reduction below 1 SM NA. Straight-in Rwy 30 NA at night, Circling Rwy 2, 30 NA at night.

**MISSED APPROACH:** Climb to 4000 direct HANNU and on track 294° to WINCH and hold.

ATIS <b>121.15</b>	SANTA BARBARA APP CON * <b>124.15 327.8</b>	SANTA MARIA TOWER * <b>118.3 (CTAF) 239.25</b>	GND CON <b>121.9</b>	UNICOM <b>122.95</b>
-----------------------	--	---	-------------------------	-------------------------



ELEV 261	<b>D</b>	TDZE 261
----------	----------	----------



4000	HANNU	WINCH	Visual Segment - Obstacles.		ELZUS
↑	✧	tr 294° ✧	CIMSO	PAMJI	3500
			ANIBY 3.9 NM to RW30		
			RW30		
			1780	2200	2500
			3.9 NM	1.1 NM	2.8 NM
				4.1 NM	
CATEGORY	A	B	C	D	
LNAV MDA	1600-1¼ 1339 (1400-1¼)	1600-1½ 1339 (1400-1½)	1600-3 1339 (1400-3)	NA	
CIRCLING	1600-1¼ 1339 (1400-1¼)	1600-1½ 1339 (1400-1½)	1600-3 1339 (1400-3)	NA	

SW-3, 16 APR 2026 to 14 MAY 2026

SW-3, 16 APR 2026 to 14 MAY 2026