

SAVANNAH, GEORGIA

HI-ILS or LOC RWY 10

LOC I-SAV 111.35 Chan 50 (Y)	APCH CRS 097°	Rwy ldg TDZE Arpt Elev	9351 30 50
--	-------------------------	------------------------------	---------------------------------------

[USAF]

SAVANNAH/HILTON HEAD INTL (KSAV)

DME required

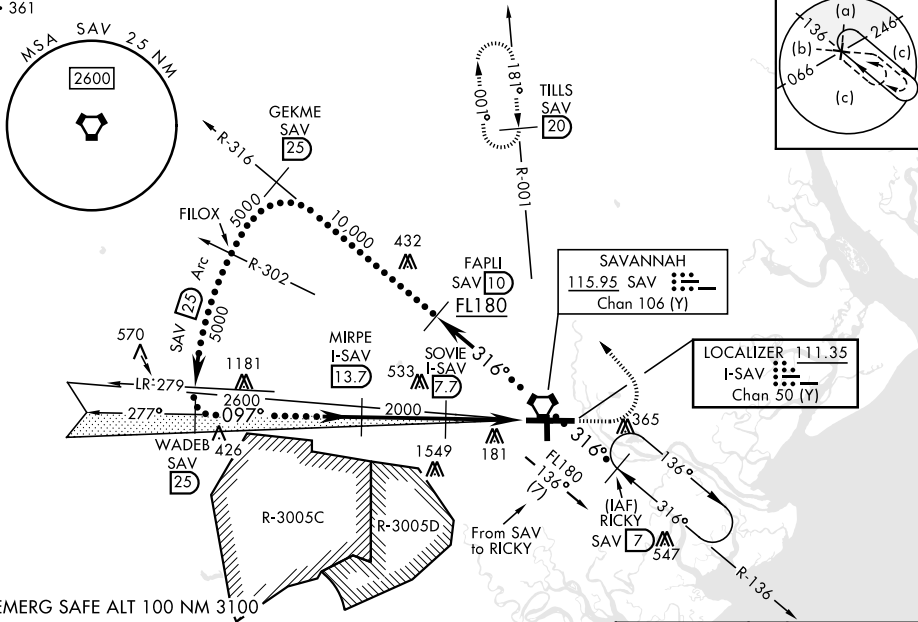
Procedure NA when Control Tower closed.
 * When ALS inop, increase vis to RVR 40
 ** When ALS inop, increase vis to 1 $\frac{1}{2}$ miles.



MISSED APPROACH: Climb to 800, then climbing left turn to 4000 via heading 330° and SAV VORTAC R-001 to TILLS/SAV 20 DME and hold.

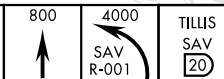
ATIS ★ 123.75	APP CON 125.3 371.875	TOWER ★ 125.975 (CTAF) 257.8	GND CON 121.9 348.6	CLNC DEL 119.55 291.775
-------------------------	---------------------------------	--	-------------------------------	-----------------------------------

• 361

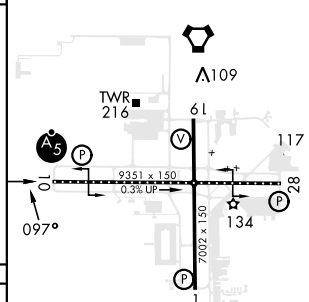
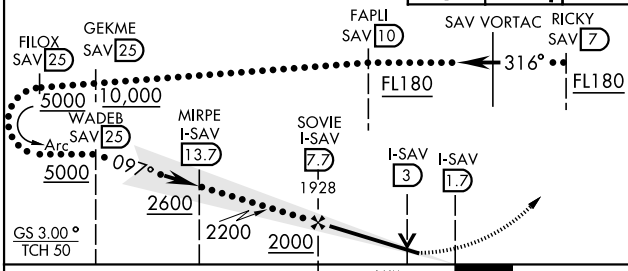


EMERG SAFE ALT 100 NM 3100

Use I-SAV DME when on the localizer course.
 VGSI and ILS glideslope not coincident.
 VGSI angle 3.00/TCH 69.



ELEV	50	TDZE	30
------	----	------	----



CATEGORY	C	D	E
S-ILS 10 *	230/18	200	(200- $\frac{1}{2}$)
S-LOC 10 **	500/50	470	(500-1)
CIRCLING	740-2 690 (700-2)	740-2 $\frac{1}{4}$ 690 (700-2 $\frac{1}{4}$)	900-3 850 (900-3)

REIL Rwy 19, 28
 HIRL all Rwy
 TDZL/CL Rwy 10

SAVANNAH, GEORGIA
 Amdt 8 08NOV18

32° 08' N-81° 12' W

SAVANNAH/HILTON HEAD INTL (KSAV)

HI-ILS or LOC RWY 10

SE-4, 16 APR 2026 to 14 MAY 2026

SE-4, 16 APR 2026 to 14 MAY 2026