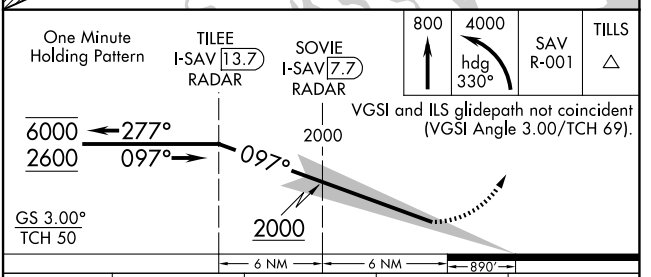
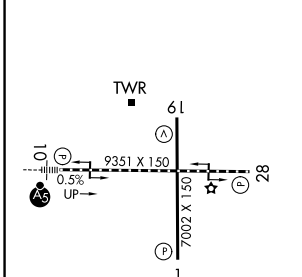
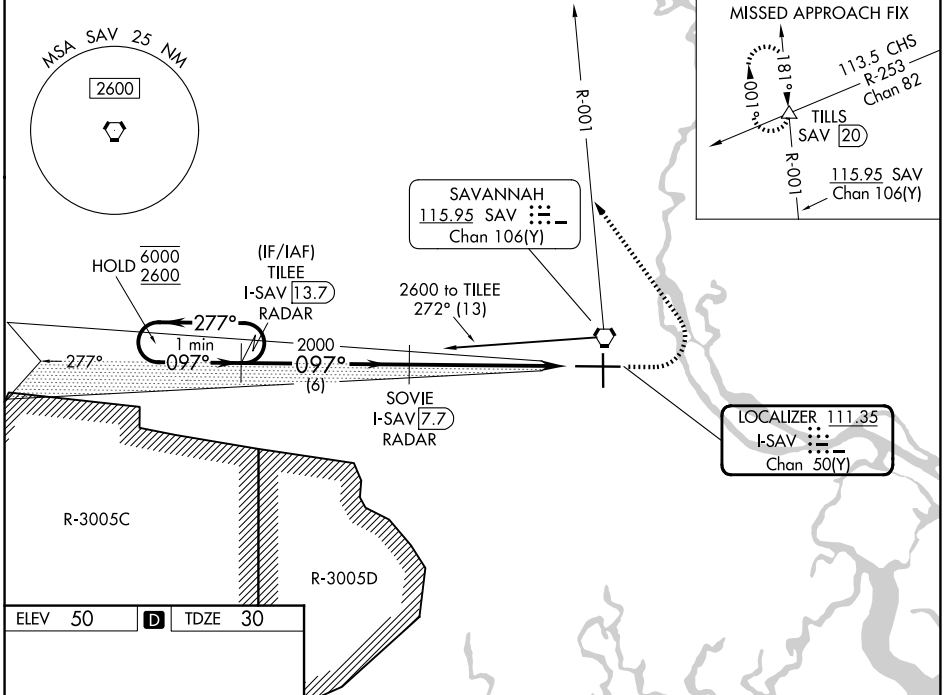


LOC I-SAV 111.35 Chan 50(Y)	APP CRS 097°	Rwy Ldg TDZE 30 Apt Elev 50	9351
---	------------------------	---	-------------

ILS RWY 10 (SA CAT I & II)
SAVANNAH/HILTON HEAD INTL (SAV)

DME required.		MALSR		MISSED APPROACH: Climb to 800 then climbing left turn to 4000 on heading 330° and SAV VORTAC R-001 to TILLS INT/SAV 20 DME and hold.	
<p>▼ SA CAT I: Requires specific OPSPEC, MSPEC, or LOA approval and use of HUD to DH. SA CAT II: Reduced lighting: Requires specific OPSPEC, MSPEC, or LOA approval and use of autoland or HUD to touchdown. Procedure NA when tower closed.</p>					
ATIS 123.75	SAVANNAH APP CON* 125.3 371.875	SAVANNAH TOWER* 125.975 (CTAF) 257.8	GND CON 121.9 348.6	UNICOM 122.95	



CATEGORY	A	B	C	D
S-ILS 10	SA CAT I	RA 162/14	150 DA 180	
S-ILS 10	SA CAT II	RA 116/12	100 DA 130	

SA CATEGORY I & II ILS - SPECIAL AIRCREW & AIRCRAFT CERTIFICATION REQUIRED

SE-4, 16 APR 2026 to 14 MAY 2026

SE-4, 16 APR 2026 to 14 MAY 2026