

WAAS CH 90114 W10A	APP CRS 097°	Rwy Ldg TDZE Apt Elev	9351 30 50
--	------------------------	-----------------------------	---------------------------------------

RNAV (GPS) RWY 10

SAVANNAH/HILTON HEAD INTL (SAV)

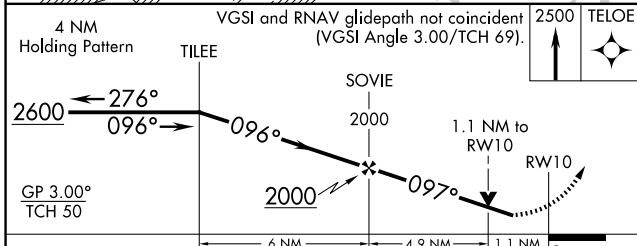
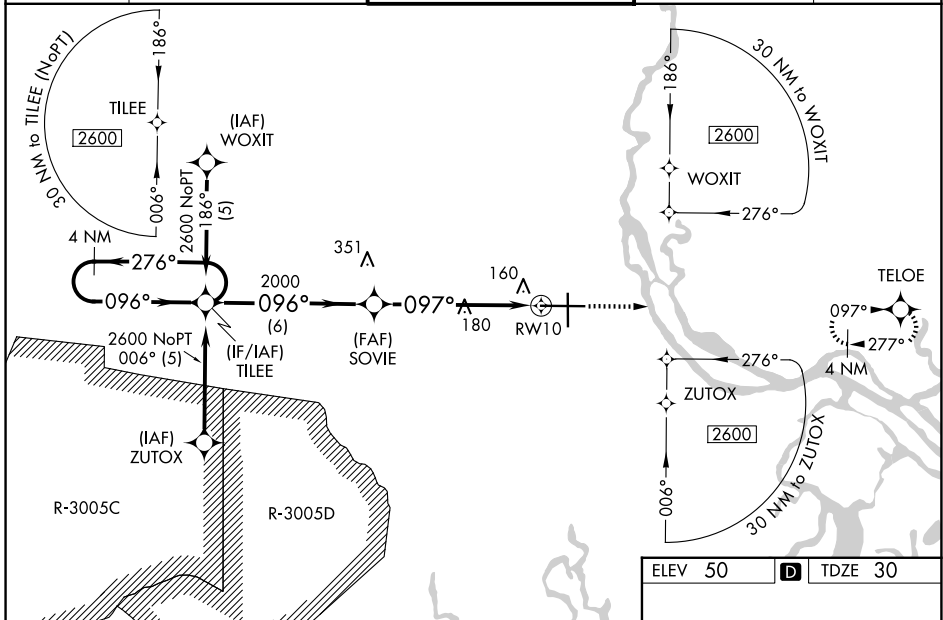
RNP APCH-GPS

▼ For inop ALS increase LNAV/VNAV all Cats visibility to 1½ SM, increase LNAV Cat C/D to RVR 6000. For uncompensated Baro-VNAV systems, LNAV/VNAV NA below -15°C or above 54°C. When local altimeter setting not received, use Hilton Head Island altimeter setting and increase LPV DA to 296 feet and all visibilities to RVR 2000, increase LNAV/VNAV DA to 596 feet and all visibilities to 1½ SM, increase all MDAs 80 feet and LNAV Cat C/D visibility to RVR 5000. For inop ALS when using Hilton Head Island altimeter setting, LNAV/VNAV all Cats visibility to 1½ SM, increase LNAV Cat C/D visibility to 1½ SM. VDP and Baro-VNAV NA when using Hilton Head Island altimeter setting.

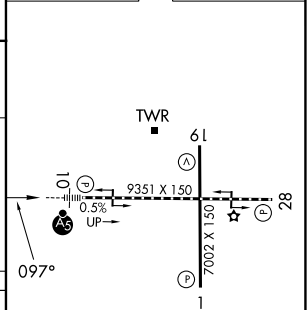


MISSED APPROACH:
Climb to 2500 direct TELOE and hold.

ATIS 123.75	SAVANNAH APP CON* 125.3 371.875	SAVANNAH TOWER* 125.975 (CTAF) 0 257.8	GND CON 121.9 348.6	UNICOM 122.95
-----------------------	---	--	-------------------------------	-------------------------



ELEV 50	D	TDZE 30
---------	----------	---------



CATEGORY	A	B	C	D
LPV DA	230/18		200 (200-½)	
LNAV/VNAV DA	530/50		500 (500-1)	
LNAV MDA	440/24	410 (400-½)	440/40	410 (400-¾)
CIRCLING	520-1	470 (500-1)	740-2 690 (700-2)	740-2¼ 690 (700-2¼)

TDZL/RCLS Rwy 10
REIL Rwys 19 and 28
HIRL Rwys 1-19 and 10-28

SE-4, 16 APR 2026 to 14 MAY 2026

SE-4, 16 APR 2026 to 14 MAY 2026