

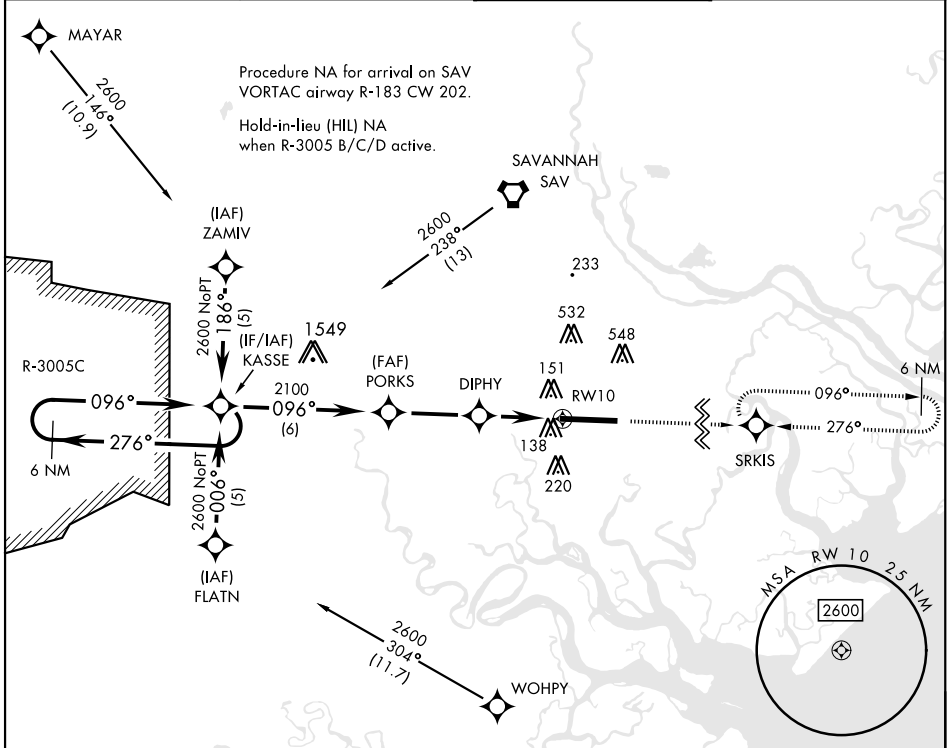
RNAV (GPS) RWY 10

APCH CRS	Rwy Idg	11,393
096°	TDZE	26
	Arprt Elev	41

[USA]

HUNTER AAF (KSVN)

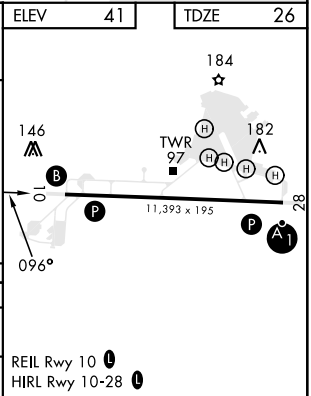
RNP APCH-GPS		MISSED APPROACH: Climb to 2500 direct SRKIS and hold.	
RADAR required when R-3005 B/C/D active.			
*When ALS inop, increase CAT AB vis to 1 mile; CAT CD vis to 1¼ miles. **Circling not authorized N of Rwy 10-28 for CAT D.			
ATIS*	SAVANNAH APP CON*	TOWER*	GND CON*
127.525 323.125	120.4 353.775	124.975 (CTAF) 0 279.575	121.8 291.675



SE-4, 16 APR 2026 to 14 MAY 2026

SE-4, 16 APR 2026 to 14 MAY 2026

2500		SRKIS	
ELEV 41		TDZE 26	
CATEGORY	A	B	C
LNAV MDA*	460-1	434	(500-1)
CIRCLING**	600-1	559 (600-1)	920-2½ 879 (900-2½)
			920-2¾ 879 (900-2¾)



RNAV (GPS) RWY 10