

WAAS CH 97622 W28A	APP CRS 282°	Rwy Ldg TDZE Apt Elev	4850 323 378
--	------------------------	-----------------------------	---

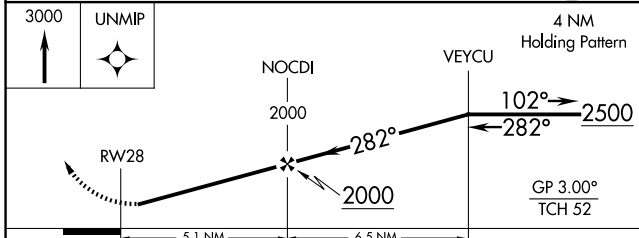
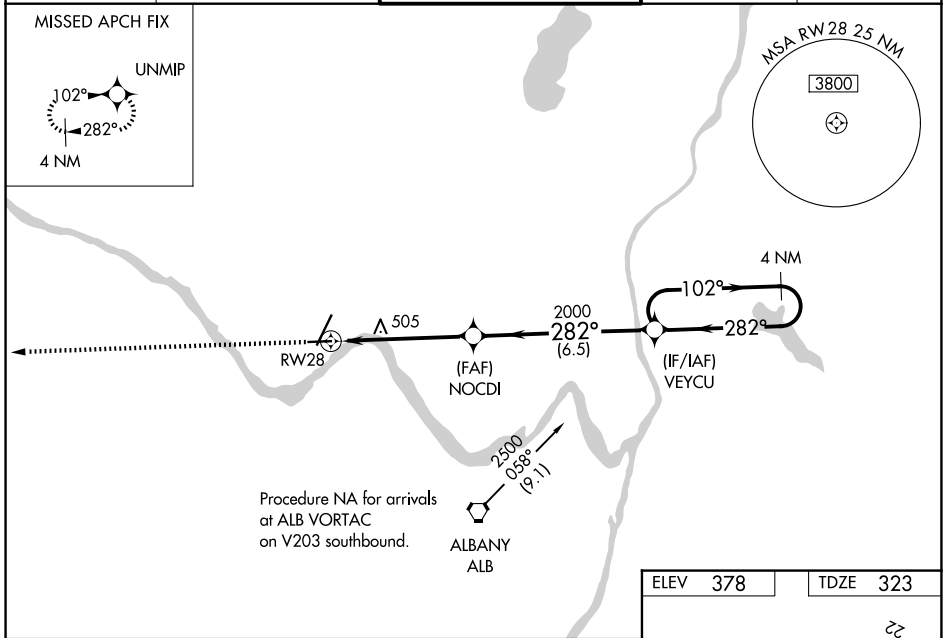
RNAV (GPS) RWY 28

SCHENECTADY COUNTY (SCH)

NA Circling Rwy 10 NA at night. Baro-VNAV NA when using Albany altimeter setting. For uncompensated Baro-VNAV systems, LNAV/VNAV NA below -15°C (5°F) or above 54°C (130°F). DME/DME RNP-0.3 NA. Helicopter visibility reduction below 1 SM NA. When local altimeter setting not received, use Albany altimeter setting and increase all DA 33 feet and all MDA 40 feet; increase LNAV/VNAV all Cats visibility and LNAV Cat C/D visibility 1/8 mile.

MISSED APPROACH: Climb to 3000 direct UNMIP and hold.

AWOS-3 119.275	ALBANY APP CON 132.825 263.075	SCHENECTADY TOWER ★ 121.3 (CTAF) 321.1	GND CON 121.9	UNICOM 122.95
--------------------------	--	---	-------------------------	-------------------------



ELEV 378	TDZE 323
----------	----------

REIL Rwy 28
HIRL Rwy 4-22
MIRL Rwy 10-28

CATEGORY	A	B	C	D
LPV DA		618-1	295 (300-1)	
LNAV/VNAV DA		774-1½	451 (400-1½)	
LNAV MDA	820-1	497 (500-1)	820-1¾	497 (500-1¾)
CIRCLING	880-1 502 (600-1)	940-1 562 (600-1)	1120-2¼ 742 (800-2¼)	1320-3 942 (1000-3)

NE-2, 16 APR 2026 to 14 MAY 2026

NE-2, 16 APR 2026 to 14 MAY 2026