

| | | |
|---------------------------------|------------------------|---|
| WAAS CH 69435 W15A | APP CRS 149° | Rwy Ldg 8014 TDZE 166 Apt Elev 166 |
|---------------------------------|------------------------|---|

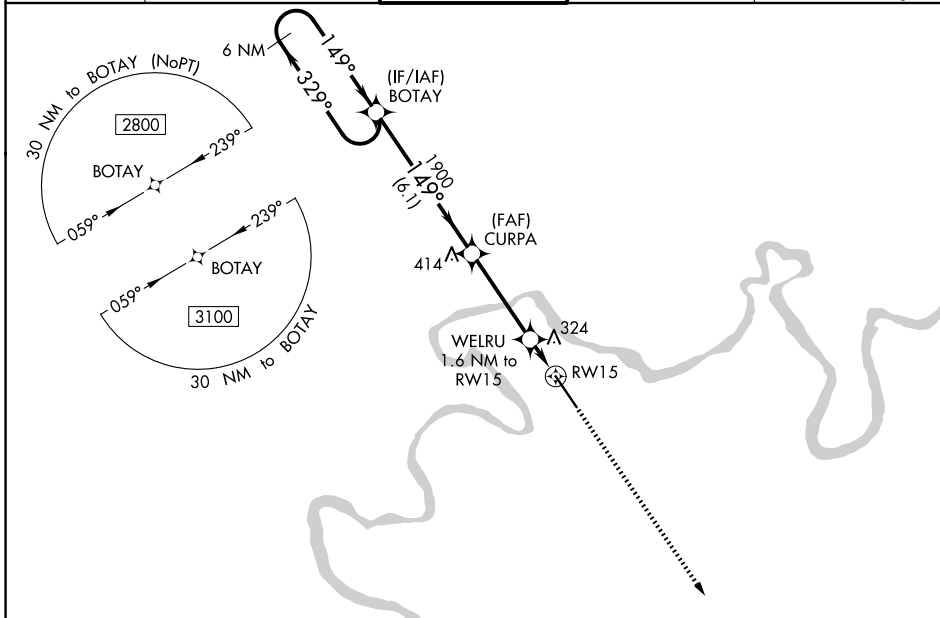
RNAV (GPS) RWY 15

CRAIG FLD (SEM)

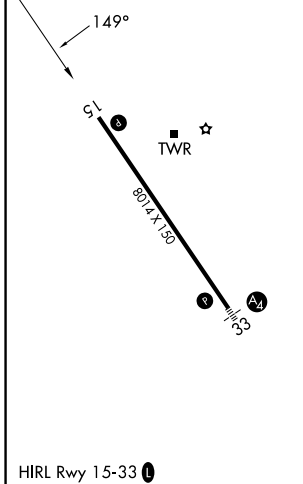
⚠ Baro-VNAV NA when using Montgomery altimeter setting. For uncompensated Baro-VNAV systems, LNAV/VNAV NA below -15°C (5°F) or above 54°C (130°F). DME/DME RNP-0.3 NA. VDP NA with Montgomery altimeter setting. When local altimeter setting not received, use Montgomery altimeter setting and increase all DA 78 feet, all MDA 80 feet, LPV all Cats visibility 3/8 mile, LNAV/VNAV all Cats visibility and LNAV Cats C and D visibility 1/4 mile, Circling Cat C visibility 1/2 mile and Cat D visibility 1/4 mile.

MISSED APPROACH:
Climb to 3100 direct CADIP and hold.

| | | | | |
|---------------------------|---|-------------------------------|---------------------------|---------------------------------|
| AWOS-3PT 119.15 | MONTGOMERY APP CON* 124.0 363.025 | CRAIG TOWER* 120.85 | GND CON 121.675 | UNICOM 122.7 (CTAF) 0 |
|---------------------------|---|-------------------------------|---------------------------|---------------------------------|



| | |
|----------|----------|
| ELEV 166 | TDZE 166 |
|----------|----------|



| | | | | | |
|----------------------------|-------------|--|-----------------|-----------------|------------|
| 6 NM Holding Pattern BOTAY | | VGSI and RNAV glidepath not coincident (VGSI Angle 3.00/TCH 50). | | 3100 | CADIP |
| 2800 | 1900 | 1900 | 720 | 1.6 NM to RW15 | *LNAV only |
| GP 3.00° TCH 45 | 6.1 NM | 3.7 NM | 0.5 NM | 1.1 NM | |
| CATEGORY | A | B | C | D | |
| LPV DA | 416-3/4 | | 250 (300-3/4) | | |
| LNAV/VNAV DA | 569-1 3/8 | | 403 (500-1 3/8) | | |
| LNAV MDA | 560-1 | | 394 (400-1) | | |
| CIRCLING | 660-1 | 760-1 | 760-1 1/2 | 1040-2 3/4 | |
| | 494 (500-1) | 594 (600-1) | 594 (600-1 1/2) | 874 (900-2 3/4) | |

SE-4, 16 APR 2026 to 14 MAY 2026

SE-4, 16 APR 2026 to 14 MAY 2026