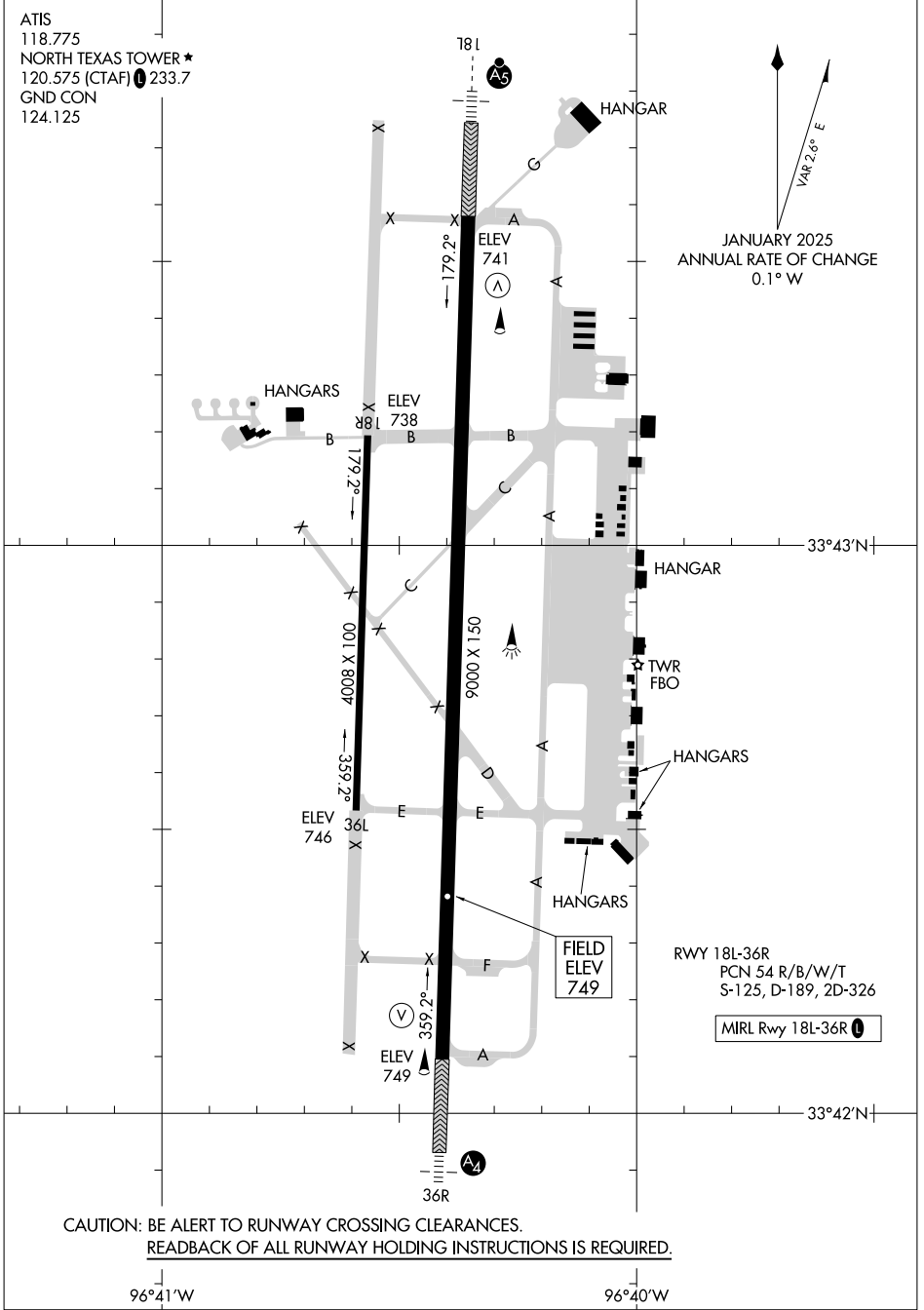


ATIS
118.775
NORTH TEXAS TOWER ★
120.575 (CTAF) 233.7
GND CON
124.125

↑
VAR 2.6° E
JANUARY 2025
ANNUAL RATE OF CHANGE
0.1° W

SC-2, 16 APR 2026 to 14 MAY 2026

SC-2, 16 APR 2026 to 14 MAY 2026



CAUTION: BE ALERT TO RUNWAY CROSSING CLEARANCES.
READBACK OF ALL RUNWAY HOLDING INSTRUCTIONS IS REQUIRED.

RWY 18L-36R
PCN 54 R/B/W/T
S-125, D-189, 2D-326

MIRL Rwy 18L-36R

96°41'W

96°40'W