

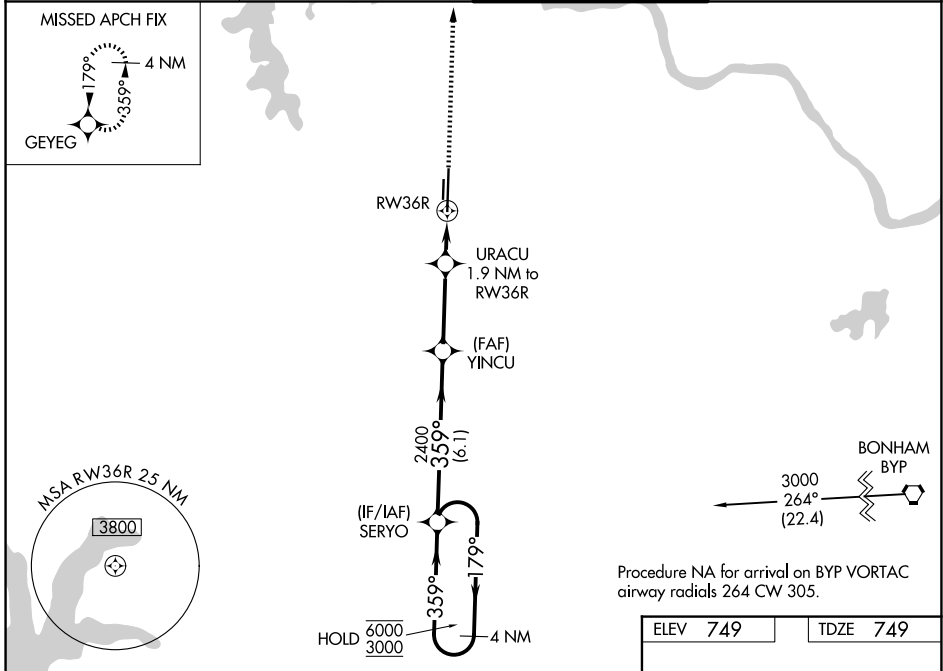
WAAS CH 65928 W36A	APP CRS 359°	Rwy Ldg TDZE 749 Apt Elev 749	9000
--	------------------------	---	-------------

RNAV (GPS) RWY 36R

NORTH TEXAS RGNL/PERRIN FLD (GYI)

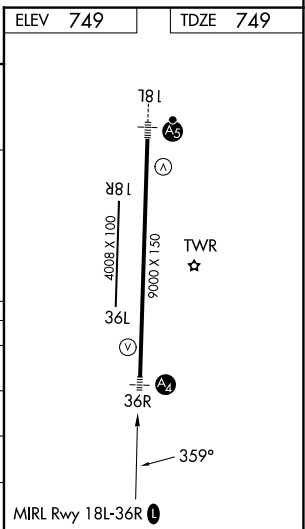
RNP APCH - GPS.		MALS	MISSED APPROACH: Climb to 3000 direct GEYEG and hold.
<p>▼ Circling Rwy 18R, 36L NA at night. Inop table does not apply to LPV.</p> <p>▲ For uncompensated Baro-VNAV systems, LNAV/VNAV NA below -10°C or above 54°C.</p>			

ATIS 118.775	FORT WORTH CENTER 124.75 323.0	NORTH TEXAS TOWER ★ 120.575 (CTAF) 0 233.7	GND CON 124.125
------------------------	--	--	---------------------------



Procedure NA for arrival on BYP VORTAC
airway radials 264 CW 305.

4 NM Holding Pattern		SERYO		3000	GEYEG
<p>6000 ← 179°</p> <p>3000 → 359°</p> <p>GP 3.00° TCH 51</p>		<p>2400</p> <p>YINCUB</p>	<p>2400</p> <p>URACU</p> <p>1.9 NM to RWY36R</p>	<p>1.3 NM to RWY36R</p>	<p>1400</p> <p>RWY36R</p>
		6.1 NM	3.1 NM	0.6 NM	1.3 NM
CATEGORY	A	B	C	D	
LPV DA	949-3/4		200 (200-3/4)		
LNAV/VNAV DA	1220-13/8		471 (500-13/8)		
LNAV MDA	1220-3/4	471 (500-3/4)	1220-11/8	471 (500-11/8)	
CIRCLING	1300-1	551 (600-1)	1400-13/4	1540-21/2	
			651 (700-13/4)	791 (800-21/2)	



SC-2, 16 APR 2026 to 14 MAY 2026

SC-2, 16 APR 2026 to 14 MAY 2026