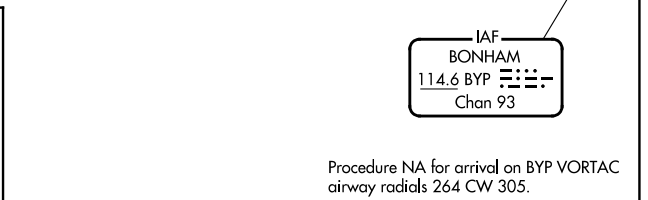
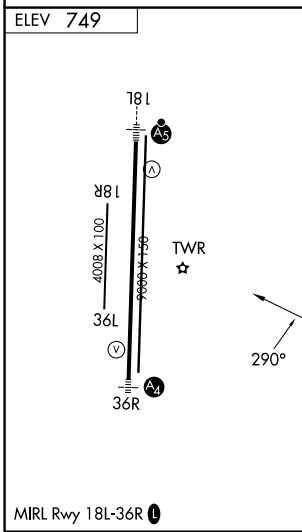
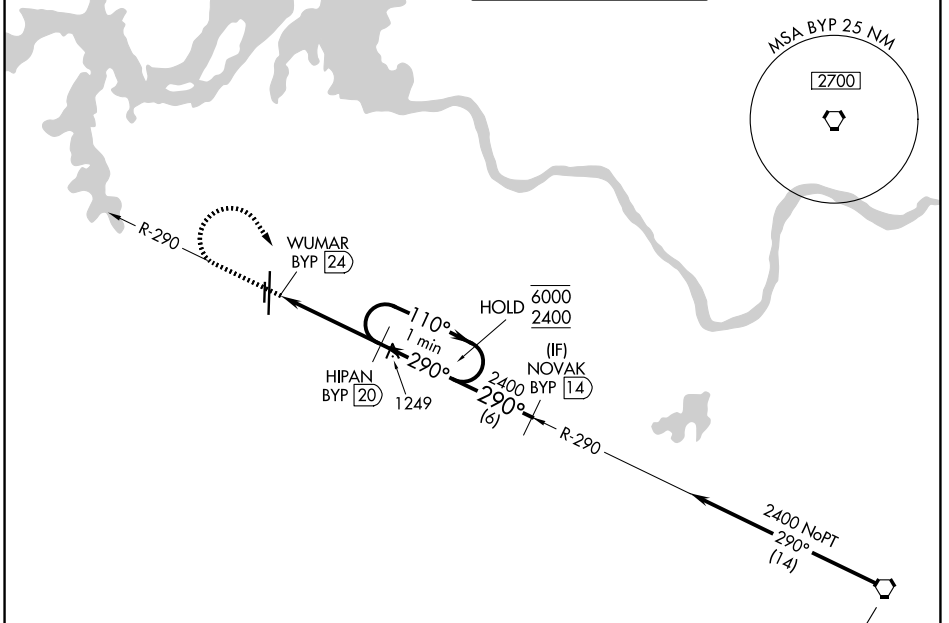


VORTAC BYP <b>114.6</b> Chan <b>93</b>	APP CRS <b>290°</b>	Rwy Ldg TDZE Apt Elev	<b>N/A</b> <b>N/A</b> <b>749</b>
--	------------------------	-----------------------------	--

**VOR-A**

NORTH TEXAS RGNL/PERRIN FLD (GYI)

DME required.		MISSED APPROACH: Climb to 2000 then climbing right turn to 2400 on heading 140° and BYP VORTAC R-290 to HIPAN/20 DME and hold.	
Circling Rwy 18R, 36L NA at night.		ATIS <b>118.775</b>	FORT WORTH CENTER <b>124.75 323.0</b>
		NORTH TEXAS TOWER ★ <b>120.575</b> (CTAF) <b>233.7</b>	GND CON <b>124.125</b>



2000	2400	BYP R-290	HIPAN BYP (20)	HIPAN BYP (20)	One Minute Holding Pattern
↑	hdg 140°				
		WUMAR BYP (24)		2400	110° → 6000
				← 290°	2400
4 NM					

CATEGORY	A	B	C	D
CIRCLING	1340-1	591 (600-1)	1400-1¾ 651 (700-1¾)	1540-2½ 791 (800-2½)

**VOR-A**

SC-2, 16 APR 2026 to 14 MAY 2026

SC-2, 16 APR 2026 to 14 MAY 2026