

WAAS CH <b>72903</b> <b>W31A</b>	APP CRS <b>315°</b>	Rwy Ldg <b>5022</b> TDZE <b>3270</b> Apt Elev <b>3275</b>
--	------------------------	---

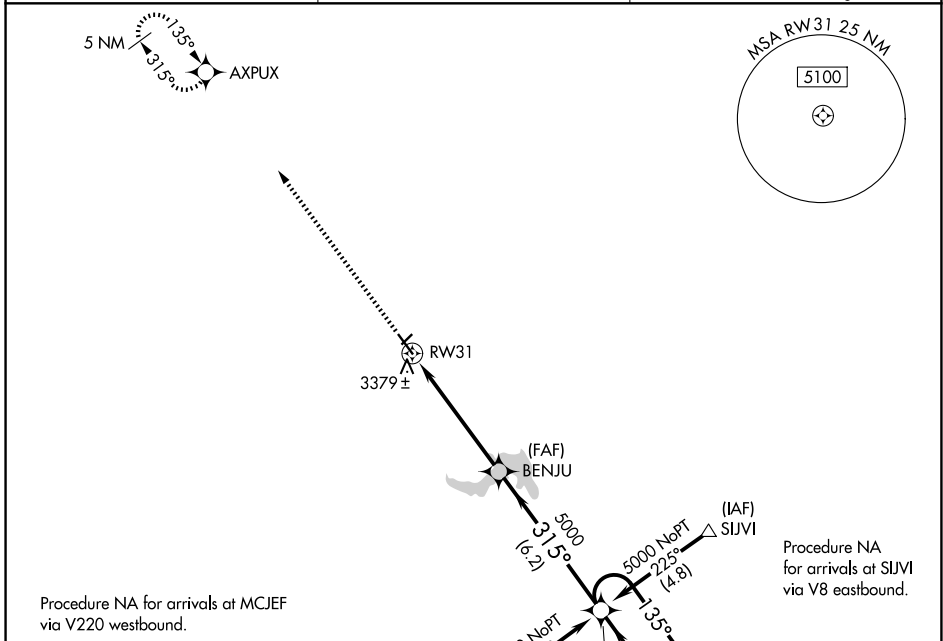
# RNAV (GPS) RWY 31

IMPERIAL MUNI (IML)

**⚠** Baro-VNAV NA when using Ogallala altimeter setting. For uncompensated Baro-VNAV systems, LNAV/VNAV NA below -21°C (-5°F) or above 54°C (130°F). DME/DME RNP-0.3 NA. Helicopter visibility reduction below 3/4 SM NA. If local altimeter setting not received, use Ogallala altimeter setting and increase all DAs 86 feet and all MDAs 100 feet. VDP NA when using Ogallala altimeter setting. Circling NA to Rwy 3 and 21.

**MISSED APPROACH:**  
Climb to 5100 direct AXPUX and hold.

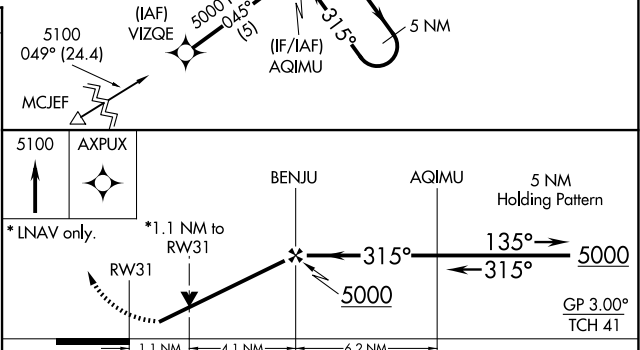
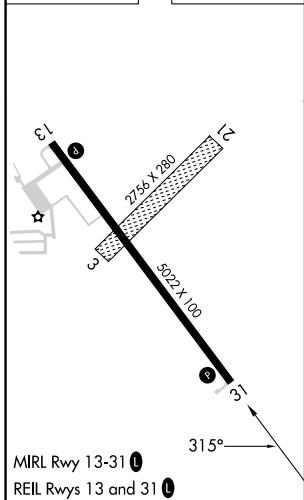
ASOS <b>124.175</b>	DENVER CENTER <b>132.7 397.85</b>	UNICOM <b>122.8 (CTAF) 0</b>
------------------------	--------------------------------------	---------------------------------



Procedure NA for arrivals at MCJEF via V220 westbound.

Procedure NA for arrivals at SIJVI via V8 eastbound.

ELEV 3275	TDZE 3270
-----------	-----------



CATEGORY	A	B	C	D
LPV DA	3520-1	250 (300-1)		NA
LNAV/VNAV DA	3649-1¼	379 (400-1¼)		NA
LNAV MDA	3640-1	370 (400-1)		NA
CIRCLING	3860-1	585 (600-1)		NA

NC-2, 16 APR 2026 to 14 MAY 2026

NC-2, 16 APR 2026 to 14 MAY 2026