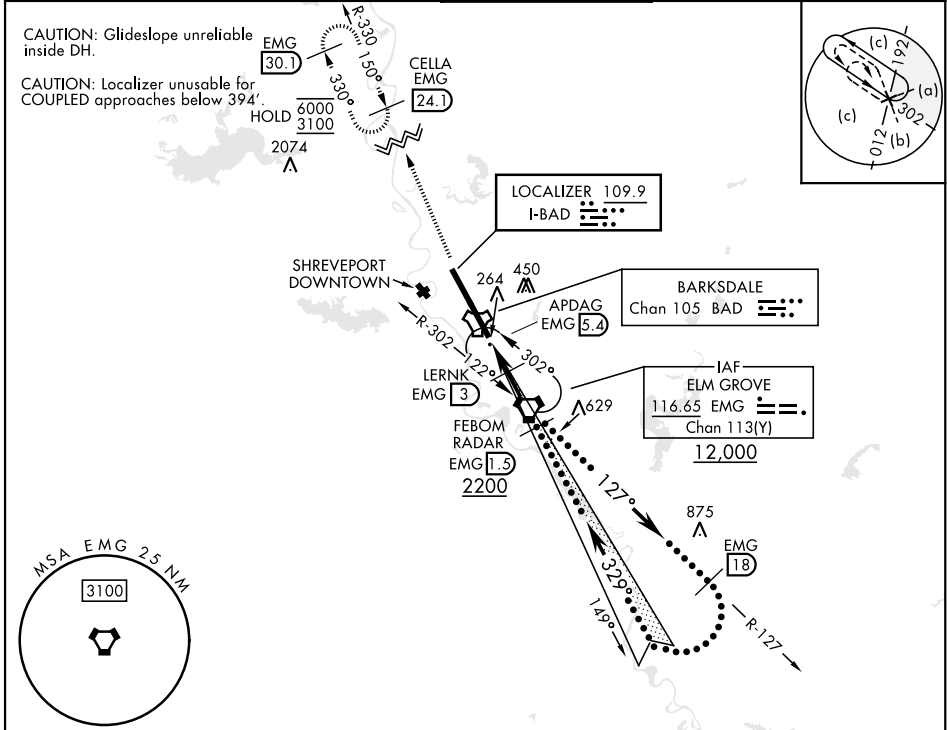


HI-ILS or LOC Y RWY 33

LOC I-BAD 109.9	APCH CRS 329°	Rwy Idg THRE Arprt Elev 8946 161 165	[USAF]	BARKSDALE AFB (KBAD)
---------------------------	-------------------------	--	--------	----------------------

RNAV or RADAR required.		ALSF-1 	MISSED APPROACH: Climb to 3100 on EMG VORTAC R-330 to CELLA/24.1 DME and hold.	
* When ALS inop, increase CAT CDE RVR to 40 and vis to 3/4 mile. ** When ALS inop, increase CAT CDE RVR to 60 and vis to 1 1/2 miles. *** Circling not authorized W of Rwy.				
ATIS 307.025	SHREVEPORT APP CON 320°-152° 123.75 360.725 153°-319° 119.9 335.55	TOWER★ 128.25 278.3	GND CON 121.8 253.5	ASR



EMERG SAFE ALT 100 NM 3300		ELEV 165	THRE 161
3100 EMG R-330	CELLA EMG 24.1	Remain within 23 NM Right at 8000	
CATEGORY	C	D	E
S-ILS 33*		363/24	200 (200-1/2)
S-LOC 33**		520/30	357 (400-3/4)
CIRCLING***	NOT AUTHORIZED	780-2 615 (700-2)	780-2 1/4 615 (700-2 1/4)
HIRL Rwy 15-33			

HI-ILS or LOC Y RWY 33

SC-4, 16 APR 2026 to 14 MAY 2026

SC-4, 16 APR 2026 to 14 MAY 2026