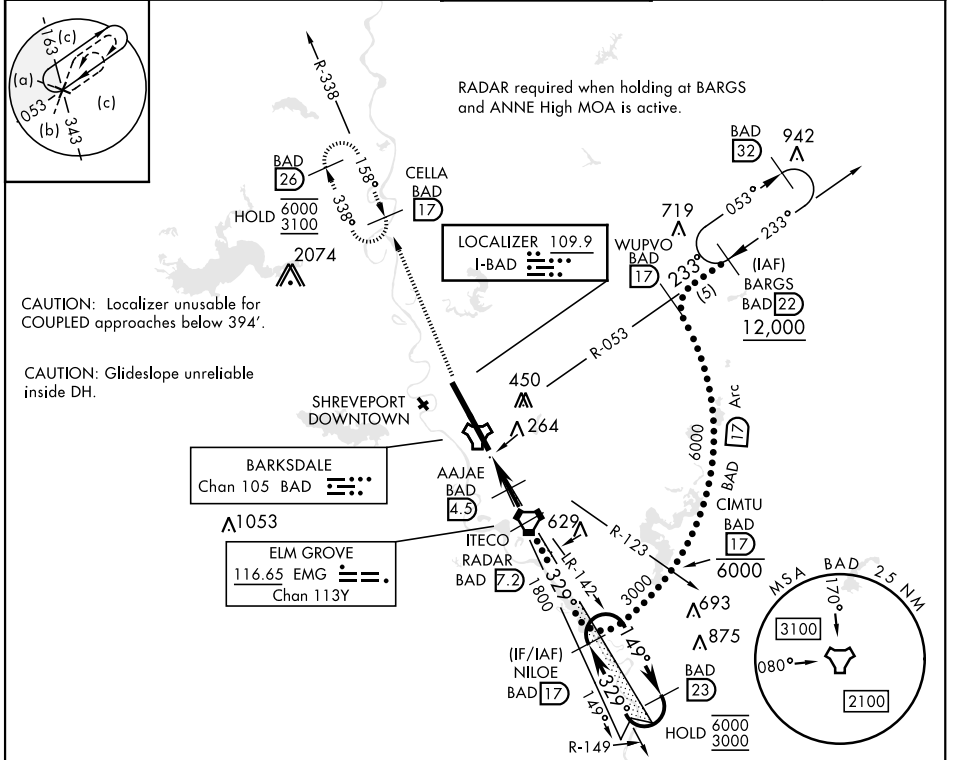


LOC I-BAD 109.9	APCH CRS 329°	Rwy Idg THRE Arpt Elev 8946 161 165	[USAF]	BARKSDALE AFB (KBAD)
---------------------------	-------------------------	---	--------	----------------------

RNAV or RADAR required	ALSF-1 	MISSED APPROACH: Climb to 3100 on BAD TACAN R-338 to CELLA (BAD 17 DME) and hold.
*When ALS inop, increase CAT CDE RVR to 40 and vis to 3/4 mile. **When ALS inop, increase CAT CDE RVR to 60 and vis to 1 1/2 miles. *** Circling not authorized W of Rwy.		

ATIS 307.025	SHREVEPORT APP CON 320°-152° 123.75 360.725 153°-319° 119.9 335.55	TOWER* 128.25 278.3	GND CON 121.8 253.5	ASR
------------------------	--	-------------------------------	-------------------------------	-----



EMERG SAFE ALT 100 NM 3200	ELEV 165	THRE 161
----------------------------	----------	----------

3100 BAD R-338	CELLA BAD 17	AAJAE BAD 4.5	ITECO RADAR BAD 7.2	NILOE Intcp Iczr BAD 17	BAD 23
JOGAB BAD 1.8	BAD 2.3	1080	1800	6000 3000	GS 2.50° TCH 49
0.6 NM	2.7 NM	2.7 NM			
CATEGORY	C	D	E		
S-ILS 33*	363/24	200 (200-1/2)			
S-LOC 33**	520/30	357 (400-%)			
CIRCLING ***	NOT AUTHORIZED	780-2 615 (700-2)	780-2 1/4 615 (700-2 1/4)		
				HIRL Rwy 15-33	

SC-4, 16 APR 2026 to 14 MAY 2026

SC-4, 16 APR 2026 to 14 MAY 2026