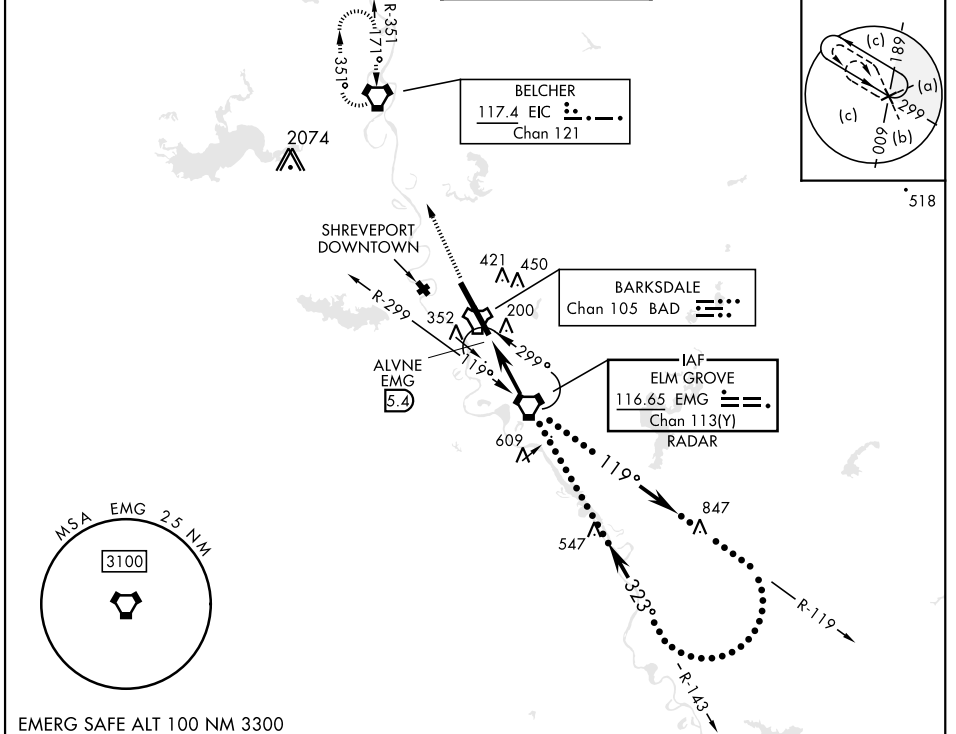


HI-VOR/DME Z RWY 33

VORTAC EMG 116.65 Chan 113(Y)	APCH CRS 323°	Rwy Idg THRE 161 Arpt Elev 165	[USAF]	BARKSDALE AFB (KBAD)
---	-------------------------	--	--------	----------------------

DME or RADAR required.	ALSF-1 	MISSED APPROACH: Climb to 3100 direct to EIC VORTAC and hold.
* When ALS inop, increase CAT CDE vis to 1 3/8 miles. ** Circling not authorized W of Rwy.		

ATIS 307.025	SHREVEPORT APP CON 320°-152° 123.75 360.725 153°-319° 119.9 335.55	TOWER★ 128.25 278.3	GND CON 121.8 253.5	ASR
------------------------	--	-------------------------------	-------------------------------	-----



EMERG SAFE ALT 100 NM 3300

3100	EIC	ELEV 165	THRE 161
<p>EMG VORTAC RADAR</p> <p>Remain within 22 NM</p> <p>Right at 8000</p> <p>12,000</p> <p>119°</p> <p>323°</p> <p>2.65° TCH 50</p> <p>1900</p> <p>ALVNE EMG 5.4</p> <p>EMG 4.4</p> <p>0.6 NM</p> <p>5.4 NM</p>			
CATEGORY	C	D	E
S-33*	640/50	479 (500-1)	
CIRCLING**	NOT AUTHORIZED	760-2 595 (600-2)	780-2 1/4 615 (700-2 1/4)
HIRL Rwy 15-33			
FAF to MAP 5.4 NM			
Knots	120	140	160 180 200
Min:Sec	2:42	2:19	2:01 1:48 1:37

HI-VOR/DME Z RWY 33

SC-4, 16 APR 2026 to 14 MAY 2026

SC-4, 16 APR 2026 to 14 MAY 2026