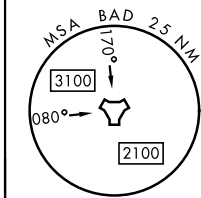
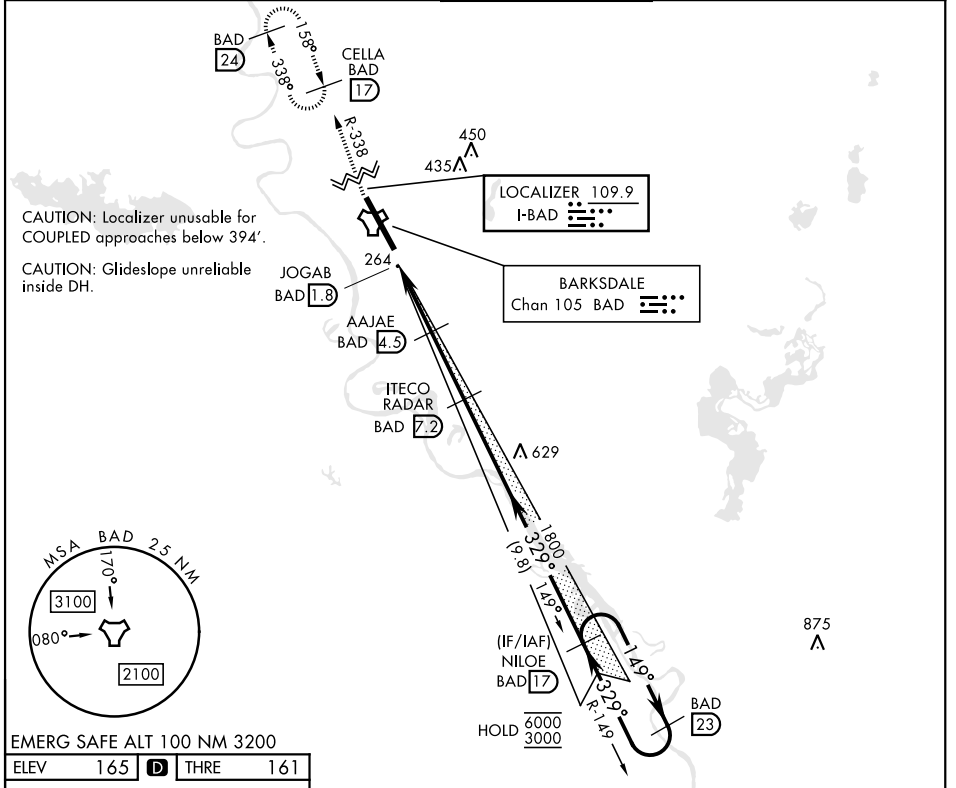


ILS or LOC W RWY 33

LOC I-BAD 109.9	APCH CRS 329°	Rwy Idg THRE Arprt Elev 8946 161 165	[USAF]	BARKSDALE AFB (KBAD)
---------------------------	-------------------------	--	--------	----------------------

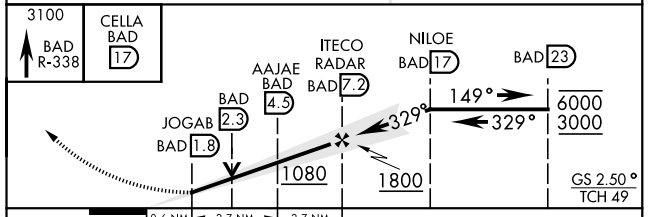
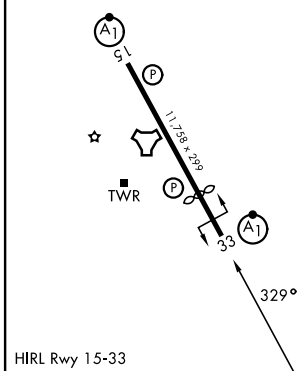
RNAV or RADAR required	ALSF-1 	MISSED APPROACH: Climb to 3100 on BAD TACAN R-338 to CELLA and hold.
* When ALS inop, increase RVR to 40 and vis to 3/4 mile. ** When ALS inop, increase RVR to 55, vis to 1 mile. *** Circling not authorized W of Rwy.		

ATIS 307.025	SHREVEPORT APP CON 320°-152° 123.75 360.725 153°-319° 119.9 335.55	TOWER ★ 128.25 278.3	GND CON 121.8 253.5	ASR
------------------------	--	---------------------------------------	--------------------------------------	-----



EMERG SAFE ALT 100 NM 3200

ELEV	165	D	THRE	161
------	-----	---	------	-----



CATEGORY	A	B	C	D	E
S-ILS 33 *	363/24		200	(200-1/2)	
S-LOC 33 **	520/24	357 (400-1/2)	520/30	357	(400-5/8)
CIRCLING ***	NOT AUTHORIZED			780-2 615 (700-2)	780-2 1/4 615 (700-2 1/4)

ILS or LOC W RWY 33

SC-4, 16 APR 2026 to 14 MAY 2026

SC-4, 16 APR 2026 to 14 MAY 2026