

BOSSIER CITY, LOUISIANA

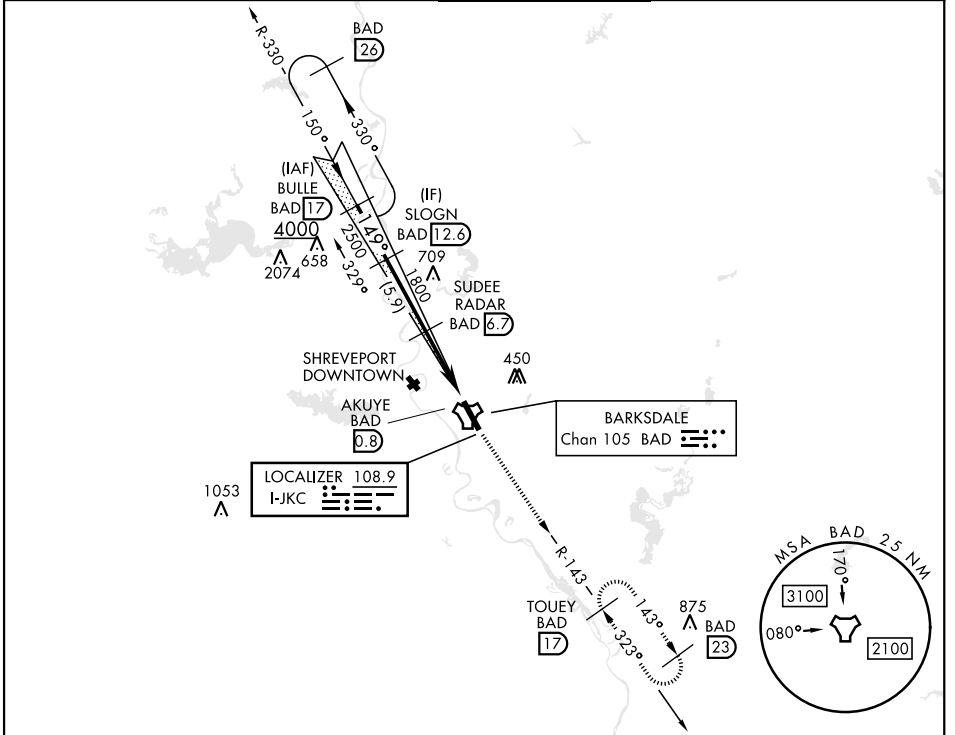
# ILS or LOC Z RWY 15

LOC I-JKC <b>108.9</b>	APCH CRS <b>149°</b>	Rwy Ldg <b>11,758</b> THRE <b>163</b> Arprt Elev <b>165</b>
---------------------------	-------------------------	--

[USAF]

BARKSDALE AFB (KBAD)

RADAR or DME required		ALSIF-1 	MISSED APPROACH: Climb to 3000 via BAD R-143 direct TOUYE and hold.		
*When ALS inop, increase RVR to 40 and vis to 3/4 mile. **When ALS inop, increase CAT AB RVR to 55 and vis to 1 mile, CAT CDE vis to 1 3/8 miles. *** Circling not authorized W of Rwy.					
ATIS <b>307.025</b>	SHREVEPORT APP CON 320°-152° <b>123.75 360.725</b> 153°-319° <b>119.9 335.55</b>	TOWER ★ <b>128.25 278.3</b>	GND CON <b>121.8 253.5</b>	ASR	



EMERG SAFE ALT 100 NM 3200

	SLOGN BAD 12.6		SUDEE RADAR BAD 6.7		BAD 2.4		AKUYE BAD 0.8		3000 BAD R-143		TOUYE BAD 17	
	GS 2.50° TCH 53		149°		1800		6.0 NM		149°		11.758 x 328	
CATEGORY	A	B	C	D	E							
S-ILS 15*	365/24			200	(200-1/2)							
S-LOC 15**	640/24	475	(500-1/2)		640/50	475	(500-1)					
CIRCLING***	NOT AUTHORIZED				780-2	615	(700-2)		780-2 1/4	615	(700-2 1/4)	

HIRL Rwy 15-33

BOSSIER CITY, LOUISIANA

32° 30' N-93° 40' W

BARKSDALE AFB (KBAD)

Amdt 7 25DEC25

# ILS or LOC Z RWY 15

SC-4, 16 APR 2026 to 14 MAY 2026

SC-4, 16 APR 2026 to 14 MAY 2026