

TACAN Y RWY 15

TACAN BAD Chan 105	APCH CRS 158°	Rwy Ldg THRE 163 Arpt Elev 165
------------------------------	-------------------------	--

[USAF]

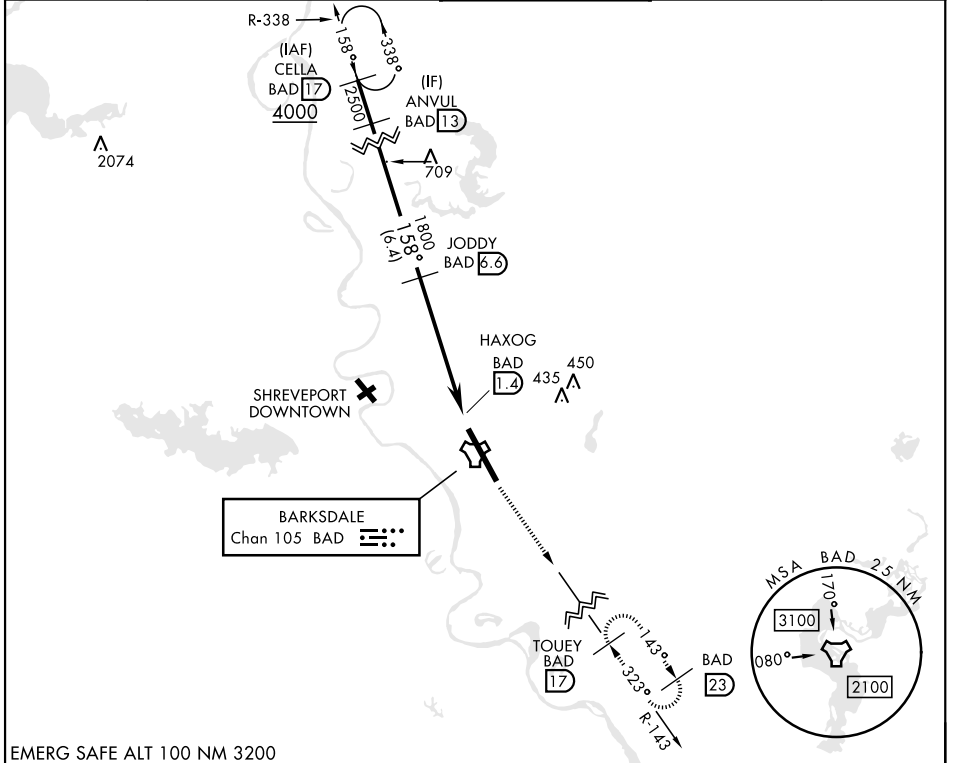
BARKSDALE AFB (KBAD)

* When ALS inop, increase CAT AB RVR to 55 and vis to 1 mile
CAT CDE vis to 1¼ miles.
** Circling not authorized W of Rwy.



MISSED APPROACH: Climb to 3000 via
BAD R-143 direct TOUEY and hold.

ATIS 307.025	SHREVEPORT APP CON 320°-152° 123.75 360.725 153°-319° 119.9 335.55	TOWER * 128.25 278.3	GND CON 121.8 253.5	ASR
------------------------	--	--------------------------------	-------------------------------	-----



EMERG SAFE ALT 100 NM 3200

	ANVUL BAD 13	JODDY BAD 6.6	HAXOG BAD 1.4	TACAN BAD 2.4	TOUEY BAD 17	ELEV	165	THRE	163
	2500	1800	3000				158°		
			5.2 NM	0.6					
CATEGORY	A	B	C	D	E				
S-15 *	640/24	475 (500-½)	640/50	475	(500-1)				
CIRCLING **	NOT AUTHORIZED			780-2 615 (700-2)	780-2¼ 615 (700-2¼)	HIRL Rwy 15-33			

TACAN Y RWY 15

SC-4, 16 APR 2026 to 14 MAY 2026

SC-4, 16 APR 2026 to 14 MAY 2026