

# TACAN Y RWY 33

TACAN BAD Chan <b>105</b>	APCH CRS <b>323°</b>	Rwy Ldg THRE Arprt Elev	<b>8946</b> <b>161</b> <b>165</b>
------------------------------	-------------------------	-------------------------------	---

[USAF]

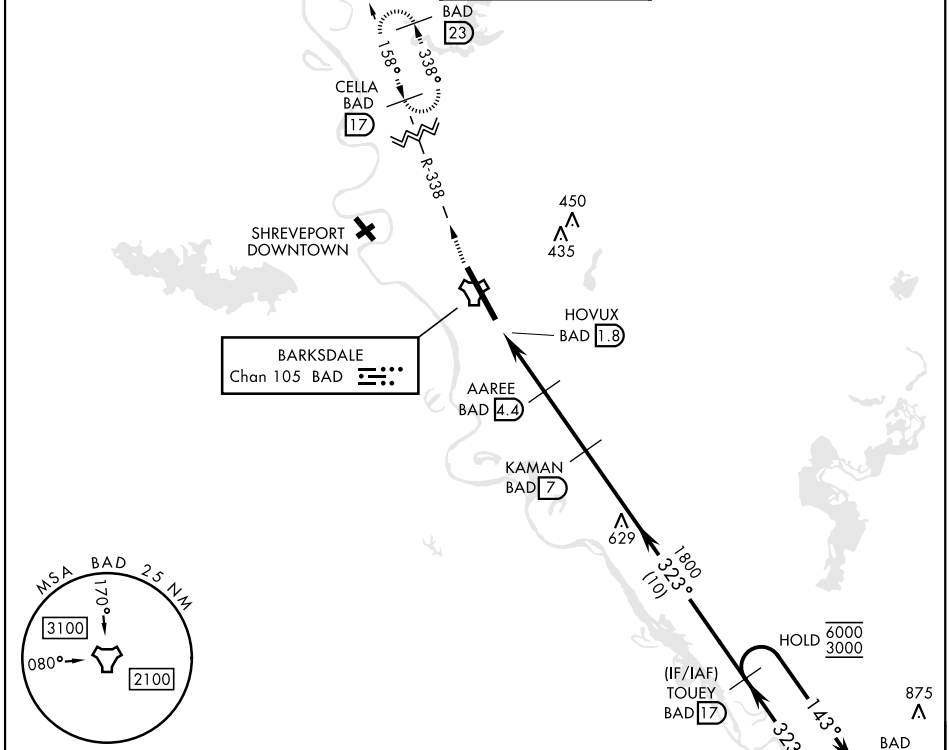
BARKSDALE AFB (KBAD)

\* When ALS inop, increase CAT AB RVR to 55 and vis to 1 mile, CAT CDE vis to 1 $\frac{1}{8}$  miles.  
\*\* Circling not authorized W of Rwy 13-33.



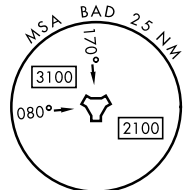
MISSED APPROACH: Climb to 4000 via BAD R-338 direct CELLA and hold.

ATIS <b>307.025</b>	SHREVEPORT APP CON 320°-152° <b>123.75 360.725</b> 153°-319° <b>119.9 335.55</b>	TOWER * <b>128.25 278.3</b>	GND CON <b>121.8 253.5</b>	ASR
------------------------	--	--------------------------------	-------------------------------	-----

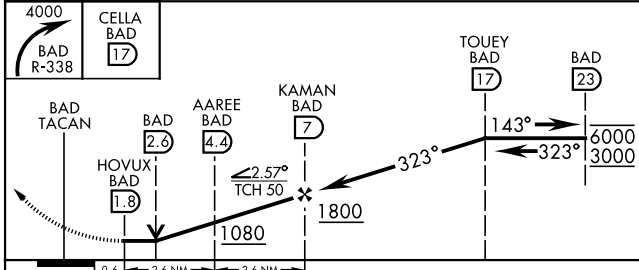


SC-4, 16 APR 2026 to 14 MAY 2026

SC-4, 16 APR 2026 to 14 MAY 2026

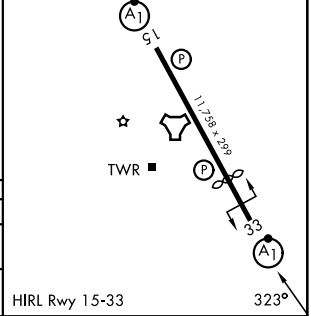


EMERG SAFE ALT 100 NM 3200



ELEV	165	THRE	161
------	-----	------	-----

CATEGORY	A	B	C	D	E
S-33*	600/24	437 (500- $\frac{1}{2}$ )	600/40	437	(500- $\frac{3}{4}$ )
CIRCLING**	NOT AUTHORIZED		780-2 615 (700-2)	780-2 $\frac{1}{4}$ 615 (700-2 $\frac{1}{4}$ )	



# TACAN Y RWY 33