


VOR/DME Y RWY 33

VORTAC EMG 116.65 Chan 113(Y)	APCH CRS 323°	Rwy Idg THRE 161 Arprt Elev 165	[USAF]	BARKSDALE AFB (KBAD)
---	-------------------------	---	--------	----------------------

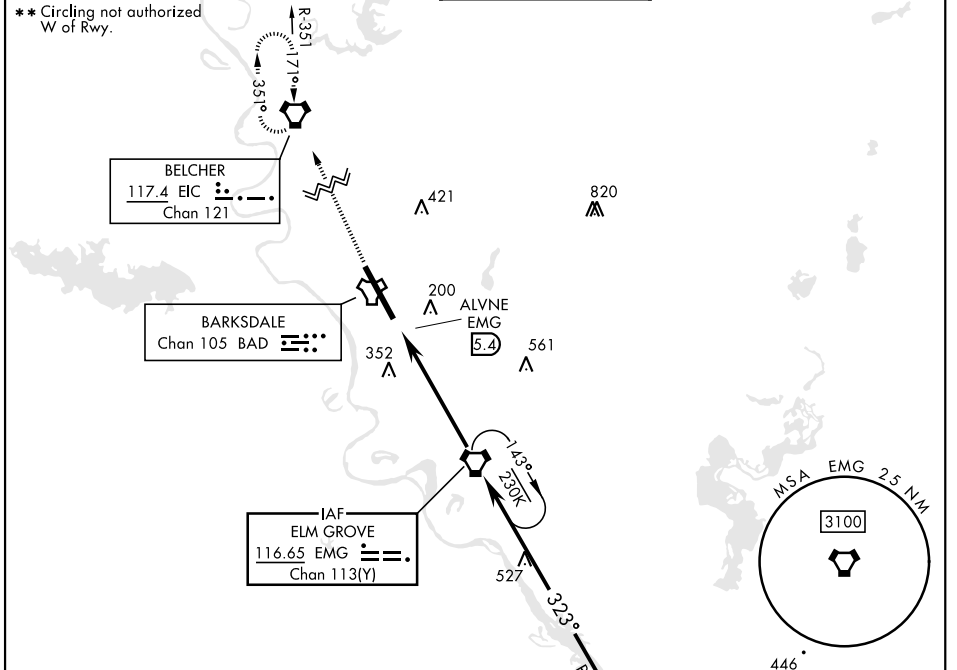
DME or RADAR required.

* When ALS inop, increase CAT AB RVR to 55 and vis to 1 mile, CAT CDE vis to 1 1/2 miles.

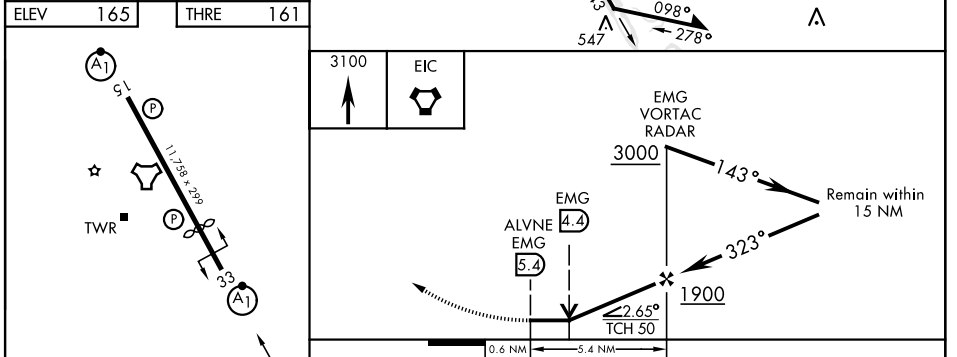
ALSF-1 

MISSED APPROACH: Climb to 3100 direct EIC VORTAC and hold.

ATIS 307.025	SHREVEPORT APP CON 123.75 360.725 (320°-152°) 119.9 335.55 (153°-319°)	TOWER ★ 128.25 278.3	GND CON 121.8 253.5	ASR
------------------------	--	--------------------------------	-------------------------------	-----



EMERG SAFE ALT 100 NM 3300



HIRL Rwy 15-33	3100	EIC	EMG VORTAC RADAR	3000	143°	Remain within 15 NM	EMG 4.4	EMG 5.4	1900	323°	2.65° TCH 50
FAF to MAP 5.4 NM	CATEGORY	A	B	C	D	E					
S-VOR 33 *	640/24	479	(500-1/2)	640/50	479	(500-1)					
Knots	60	90	120	150	180						
Min:Sec	5:24	3:36	2:42	2:10	1:48						
CIRCLING **	NOT AUTHORIZED				760-2	780-2 1/4					
					595 (600-2)	615 (700-2 1/4)					

VOR/DME Y RWY 33

SC-4, 16 APR 2026 to 14 MAY 2026

SC-4, 16 APR 2026 to 14 MAY 2026