

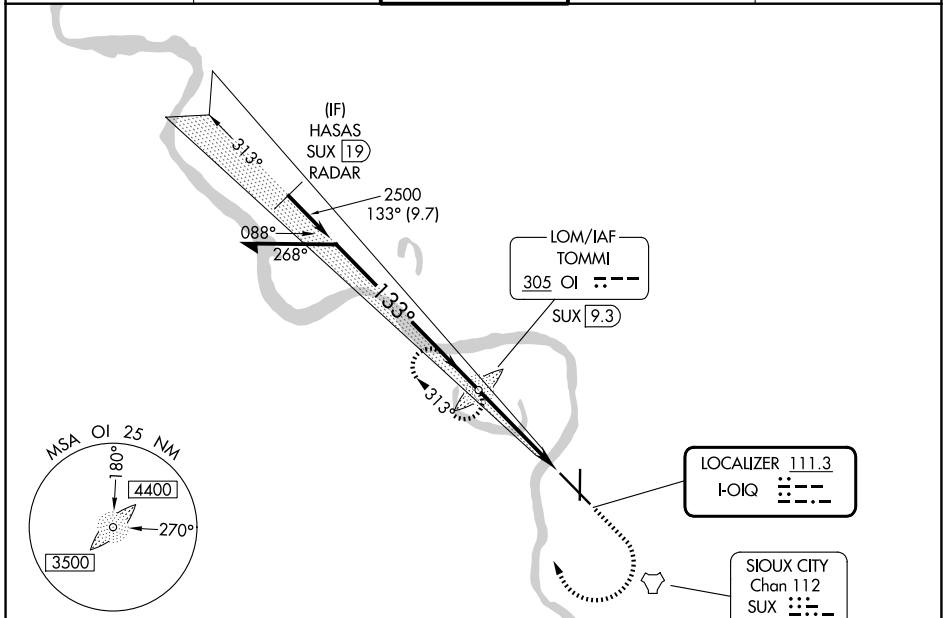
LOC I- <u>OIQ</u>	APP CRS 133°	Rwy Ldg 9002
111.3		TDZE 1095
		Apt Elev 1098

ILS or LOC RWY 13

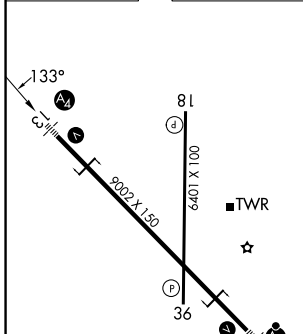
SIoux GATEWAY/BRIG GENERAL BUD DAY FLD (SUX)

ADF required. ADF or RADAR required for procedure entry.		MALS	MISSED APPROACH: Climb to 2000 then climbing right turn to 3100 direct TOMMI LOM/SUX 9.3 DME and hold, continue climb-in-hold to 3100	
<p>⚠ For inop ALS, increase S-LOC 13 Cat E visibility to 1½ SM. Inop table does not apply to S-ILS 13.</p>				

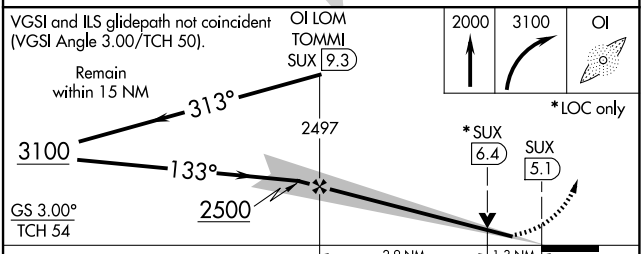
ATIS 119.45 270.8	SIoux CITY APP CON* 124.6 307.0	SIoux CITY TOWER* 118.7 (CTAF) 0 254.3	GND CON 121.9 348.6	UNICOM 122.95
-----------------------------	---	--	-------------------------------	-------------------------



ELEV 1098	D	TDZE 1095
-----------	----------	-----------



REIL Rwy 18 1
HIRL Rwy 13-31 1
MIRL Rwy 18-36 1
FAF to MAP 4.2 NM
Knots 60 90 120 150 180
Min:Sec 4:12 2:48 2:06 1:41 1:24



CATEGORY	A	B	C	D	E
S-ILS 13	1295/40 200 (200-¾)				
S-LOC 13	1560/40	465 (500-¾)	1560/60 465 (500-1¼)		
CIRCLING	1640-1 542 (600-1)	1700-1 602 (700-1)	1700-1¾ 602 (700-1¾)	1860-2½ 762 (800-2½)	1940-3 842 (900-3)