

SIoux CITY, IOWA


AL-395 (FAA)

25275

WAAS CH 61238 W36A	APP CRS 358°	Rwy Ldg TDZE 1097 Apt Elev 1098
--	------------------------	---

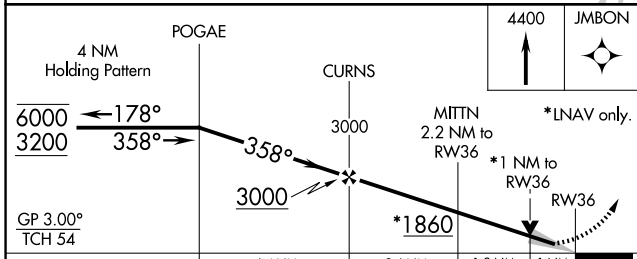
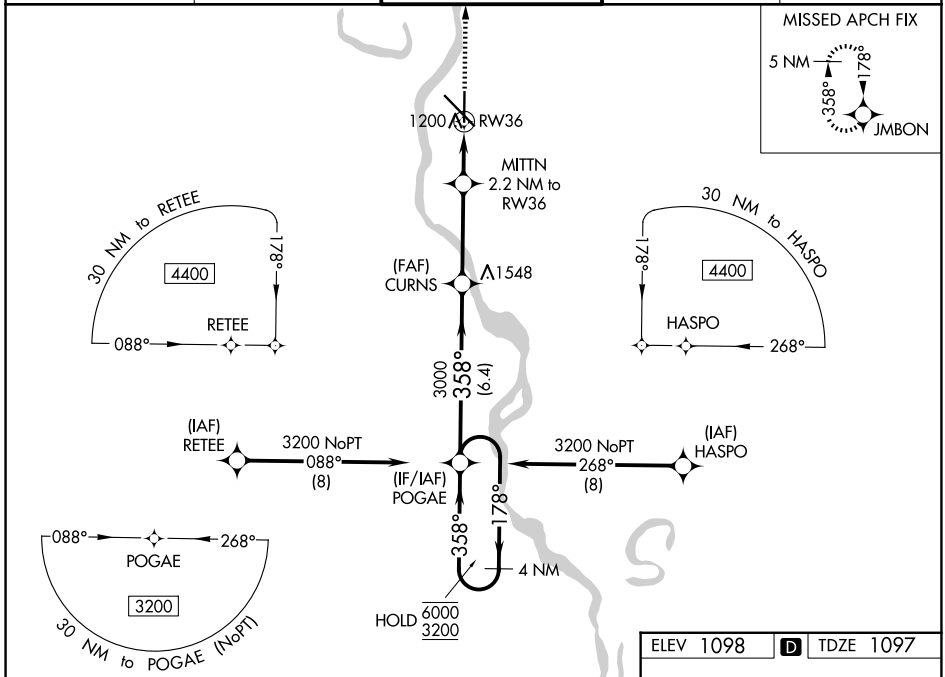
RNAV (GPS) RWY 36

SIoux GATEWAY/BRIG GENERAL BUD DAY FLD (SUx)

RNP APCH.
 For uncompensated Baro-VNAV systems, LNAV/VNAV NA below -20°C or above 54°C.

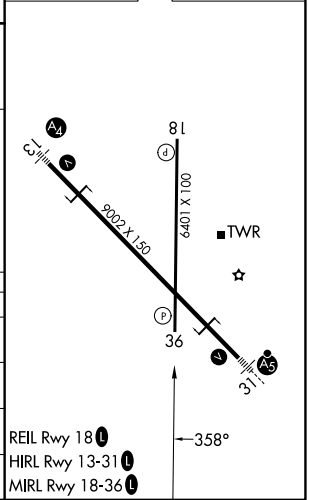
MISSED APPROACH: Climb to 4400 direct JMBON and hold, continue climb-in-hold to 4400.

ATIS 119.45 270.8	SIoux CITY APP CON * 124.6 307.0	SIoux CITY TOWER * 118.7 (CTAF) 0 254.3	GND CON 121.9 348.6	UNICOM 122.95
-----------------------------	--	---	-------------------------------	-------------------------



ELEV 1098	D TDZE 1097
-----------	--------------------

CATEGORY	A	B	C	D
LPV DA		1297-3/4	200 (200-3/4)	
LNAV/VNAV DA		1361-7/8	264 (300-7/8)	
LNAV MDA		1460-1	363 (400-1)	
CIRCLING	1640-1 542 (600-1)	1700-1 602 (700-1)	1700-1 3/4 602 (700-1 3/4)	1860-2 1/2 762 (800-2 1/2)



SIoux CITY, IOWA
Amdt 1 31DEC20

SIoux GATEWAY/BRIG GENERAL BUD DAY FLD (SUx)
42°24'N-96°23'W

RNAV (GPS) RWY 36

NC-3, 16 APR 2026 to 14 MAY 2026

NC-3, 16 APR 2026 to 14 MAY 2026