

SIoux FALLS, SOUTH DAKOTA

HI-ILS Z or LOC Z RWY 3

| | | |
|---------------------------|-------------------------|---------------------------|
| LOC I-FSD 109.9 | APCH CRS 030° | Rwy Idg 8999 |
| | | TDZE 1424 |
| | | Arprt Elev 1430 |

[USAF]

JOE FOSS FLD (KFSD)

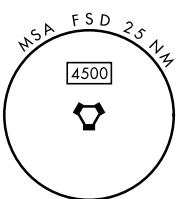
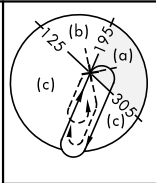
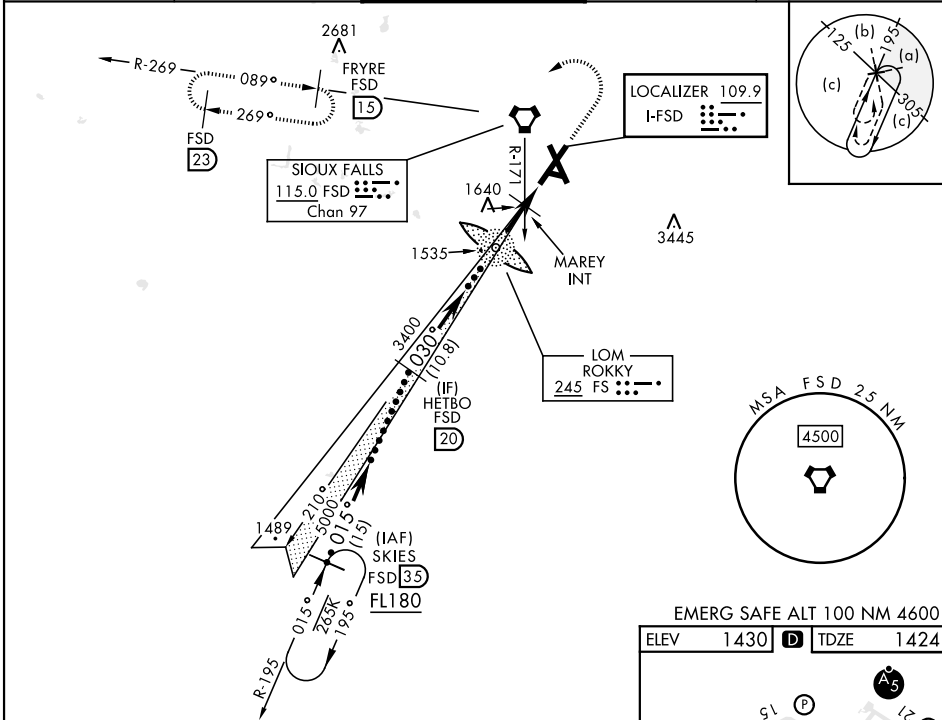
RADAR and DME required.

- ▲ * When ALS inop, increase CAT CDE RVR to 40, vis to ¾ mile.
- ** When ALS inop, increase CAT CDE vis to 1 ½ miles.
- *** When ALS inop, increase CAT CDE vis to 1 ½ miles.



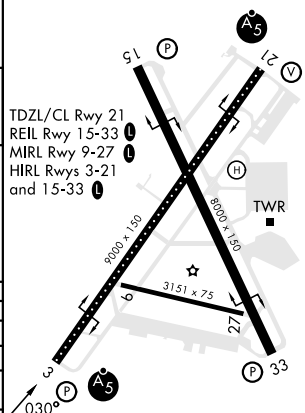
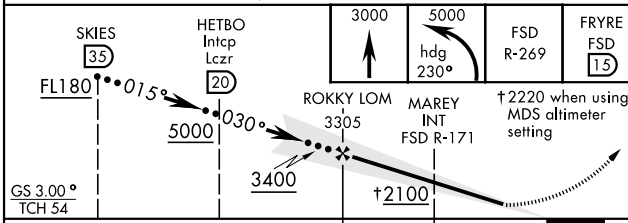
MISSED APPROACH: Climb to 3000, then climbing left turn to 5000 on heading 230° and FSD VORTAC R-269 to FRYRE (FSD 15 DME) and hold.

| | | | | |
|----------------------|---|---|-------------------------------|-----|
| ATIS 126.6 | SIoux FALLS APP CON 125.8 306.2 | SIoux FALLS TOWER ★ 118.3(CTAF) 0 257.8 | GND CON 121.9 348.6 | ASR |
|----------------------|---|---|-------------------------------|-----|



EMERG SAFE ALT 100 NM 4600

| | |
|-----------|-----------|
| ELEV 1430 | TDZE 1424 |
|-----------|-----------|



| CATEGORY | C | D | E |
|--|----------------------|----------------------|--------------------|
| S-ILS 3 * | 1674/24 | 250 | (300-½) |
| S-LOC 3 ** | 2100-1½ 676 (700-1½) | 2100-1½ 676 (700-1½) | |
| CIRCLING | 2100-1½ 670 (700-1½) | 2200-2½ 770 (800-2½) | 2300-3 870 (900-3) |
| MAREY FIX MINIMUMS (DUAL VOR RECEIVERS REQUIRED) | | | |
| S-LOC 3 *** | 1940/55 | 516 | (600-1) |
| CIRCLING | 2060-1¾ 630 (700-1¾) | 2200-2½ 770 (800-2½) | 2300-3 870 (900-3) |

SIoux FALLS, SOUTH DAKOTA
Amdt 10 07AUG25

43°35'N-96°45'W

JOE FOSS FLD (KFSD)

HI-ILS Z or LOC Z RWY 3

NC-1, 16 APR 2026 to 14 MAY 2026

NC-1, 16 APR 2026 to 14 MAY 2026