

LOC I-JOU <b>111.1</b>	APP CRS <b>210°</b>	Rwy Ldg TDZE Apt Elev	<b>8999</b> <b>1430</b> <b>1430</b>
---------------------------	------------------------	-----------------------------	---

# ILS or LOC RWY 21

JOE FOSS FLD (FSD)

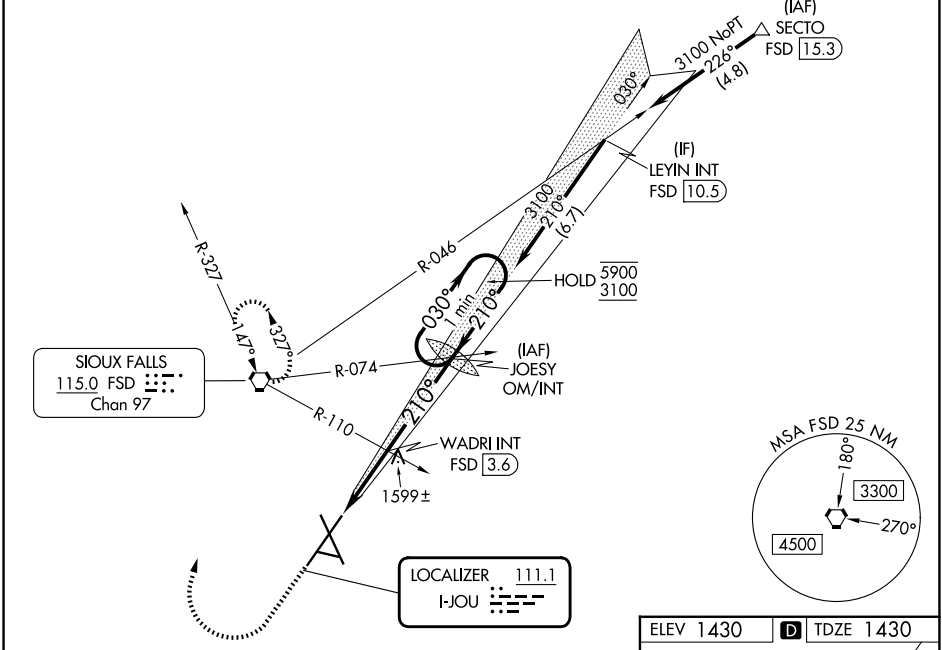
**⚠** For inop ALS, increase S-LOC 21 Cats C/D visibility to 1 7/8 SM and S-LOC 21 WADRI fix minimums Cats C/D visibility to RVR 5500.

**ASR**  
-30°C

**MALSR**  
**A5**

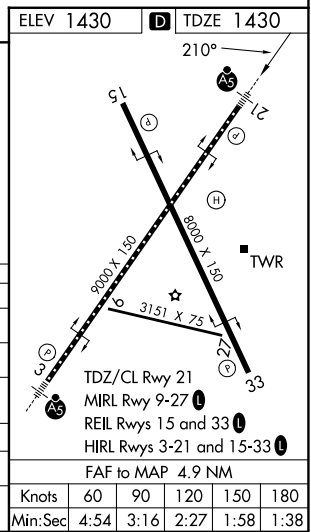
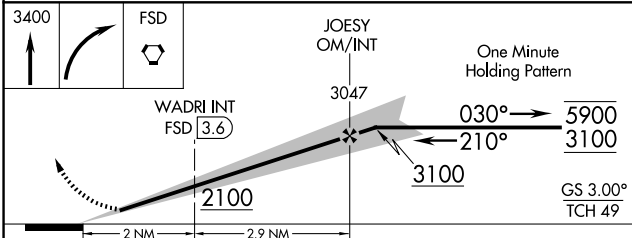
MISSED APPROACH: Climb to 3400 then right turn direct FSD VORTAC and hold.

ATIS <b>126.6</b>	SIoux FALLS APP CON * <b>125.8 284.725</b>	SIoux FALLS TOWER * <b>118.3 (CTAF) 0 257.8</b>	GND CON <b>121.9 348.6</b>	UNICOM <b>122.95</b>
----------------------	---	--	-------------------------------	-------------------------



NC-1, 16 APR 2026 to 14 MAY 2026

NC-1, 16 APR 2026 to 14 MAY 2026



CATEGORY	A	B	C	D
S-ILS 21	1630/18		200 (200-1/2)	
S-LOC 21	2100/24	670 (700-1/2)	2100-1 1/2	670 (700-1/2)
CIRCLING	2100-1	670 (700-1)	2100-1 7/8	2200-2 1/2
WADRI FIX MINIMUMS				
S-LOC 21	1800/24	370 (400-1/2)	1800/35	370 (400-5/8)
CIRCLING	1980-1	550 (600-1)	2060-1 3/4	2200-2 1/2
			630 (700-1/4)	770 (800-2/2)

ELEV 1430	<b>D</b> TDZE 1430
Knots	60 90 120 150 180
Min:Sec	4:54 3:16 2:27 1:58 1:38