

LOC FSD 109.9	APP CRS 030°	Rwy Ldg TDZE Apt Elev	8999 1424 1430
-------------------------	------------------------	-----------------------------	---

ILS or LOC RWY 3

JOE FOSS FLD (FSD)

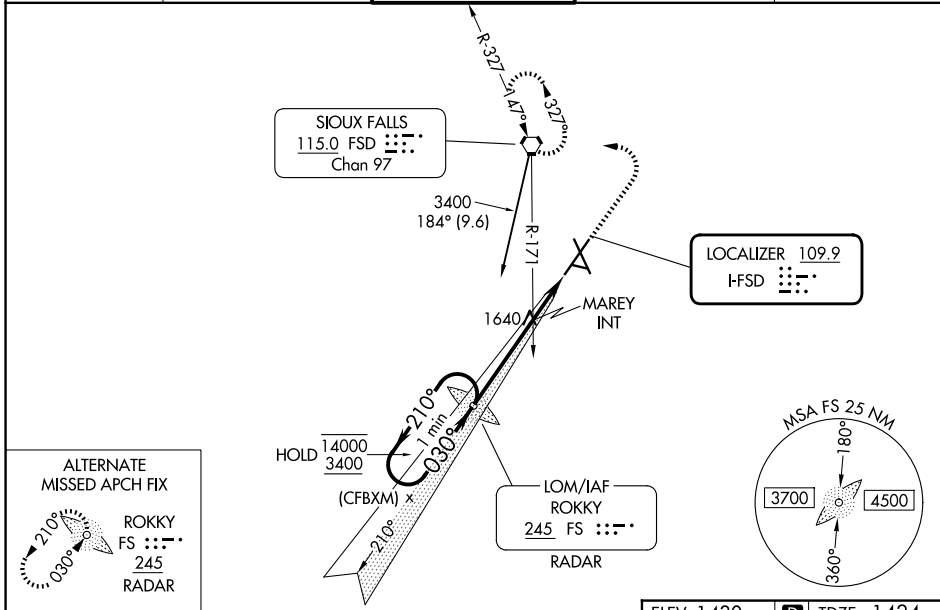
ADF or RADAR required.

MALSR
 MISSED APPROACH: Climb to 3400 then left turn direct FSD VORTAC and hold.

For inop ALS, increase S-LOC 3 Cats C/D visibility to 1 1/2 SM, and S-LOC 3 MAREY fix minimums Cats C/D to 1 1/2 SM.

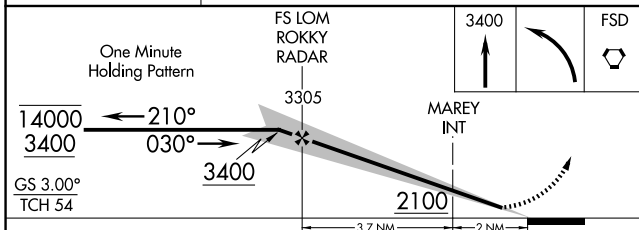
ASR
 -30°C

ATIS 126.6	SIoux FALLS APP CON* 125.8 284.725	SIoux FALLS TOWER* 118.3 (CTAF) 257.8	GND CON 121.9 348.6	UNICOM 122.95
----------------------	--	---	-------------------------------	-------------------------

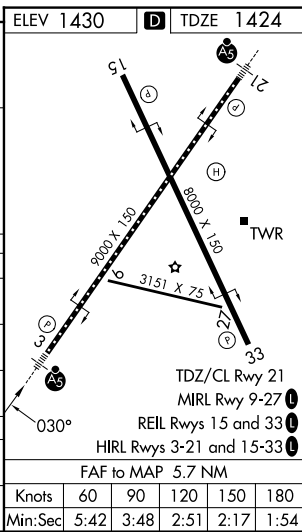


ALTERNATE MISSED APCH FIX

ROKKY
FS :::-
245
RADAR



CATEGORY	A	B	C	D
S-ILS 3	1674/24 250 (300-1/2)			
S-LOC 3	2100/24	676 (700-1/2)	2100-1 1/2	676 (700-1 1/2)
CIRCLING	2100-1	670 (700-1)	2100-1 7/8	2200-2 1/2
MAREY FIX MINIMUMS (DUAL VOR RECEIVERS REQUIRED)				
S-LOC 3	1940/24	516 (600-1/2)	1940/55	516 (600-1)
CIRCLING	1980-1	550 (600-1)	2060-1 3/4	2200-2 1/2



NC-1, 16 APR 2026 to 14 MAY 2026

NC-1, 16 APR 2026 to 14 MAY 2026

ELEV 1430	D	TDZE 1424			
Knots	60	90	120	150	180
Min:Sec	5:42	3:48	2:51	2:17	1:54