

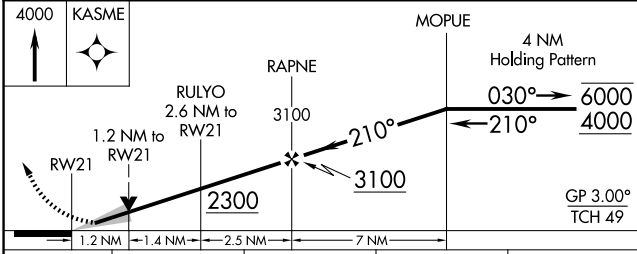
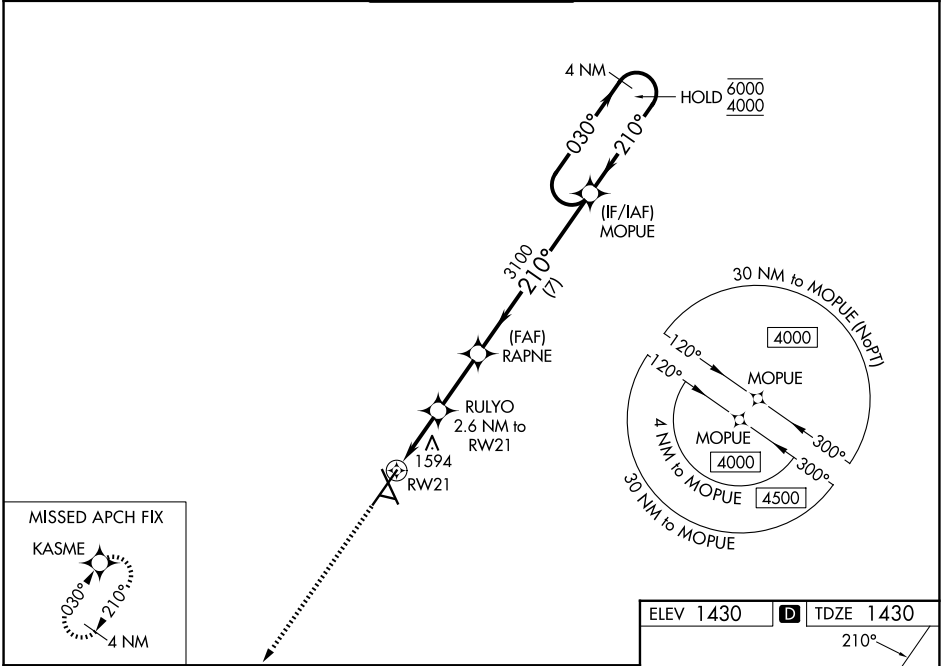
WAAS CH 99323 W21A	APP CRS 210°	Rwy Ldg TDZE Apt Elev	8999 1430 1430
--	------------------------	-----------------------------	---

RNAV (GPS) RWY 21

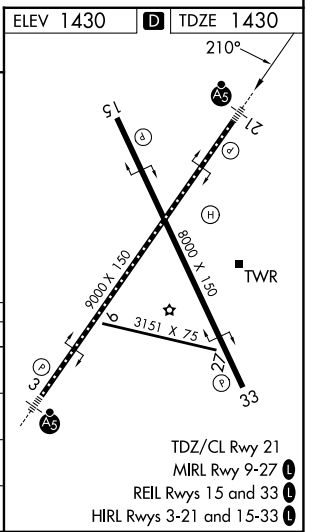
JOE FOSS FLD (FSD)

RNP APCH - GPS.	MALSR	MISSED APPROACH: Climb to 4000 direct KASME and hold.
<p>For uncompensated Baro-VNAV systems, LNAV/VNAV NA below -21°C or above 54°C. For inop ALS, increase LNAV/VNAV all Cats visibility to RVR 4500.</p>		

ATIS 126.6	SIoux FALLS APP CON* 125.8 284.725	SIoux FALLS TOWER* 118.3 (CTAF) 0 257.8	GND CON 121.9 348.6	UNICOM 122.95
----------------------	--	---	-------------------------------	-------------------------



CATEGORY	A	B	C	D
LPV DA		1630/18	200 (200-½)	
LNAV/VNAV DA		1704/24	274 (300-½)	
LNAV MDA	1860/24	430 (500-½)	1860/40	430 (500-¾)
CIRCLING	1980-1	550 (600-1)	2060-1¾ 630 (700-1¾)	2200-2½ 770 (800-2½)



NC-1, 16 APR 2026 to 14 MAY 2026

NC-1, 16 APR 2026 to 14 MAY 2026