

APP CRS <b>272°</b>	Rwy Ldg TDZE Apt Elev	<b>3151</b> <b>1424</b> <b>1430</b>
------------------------	-----------------------------	---

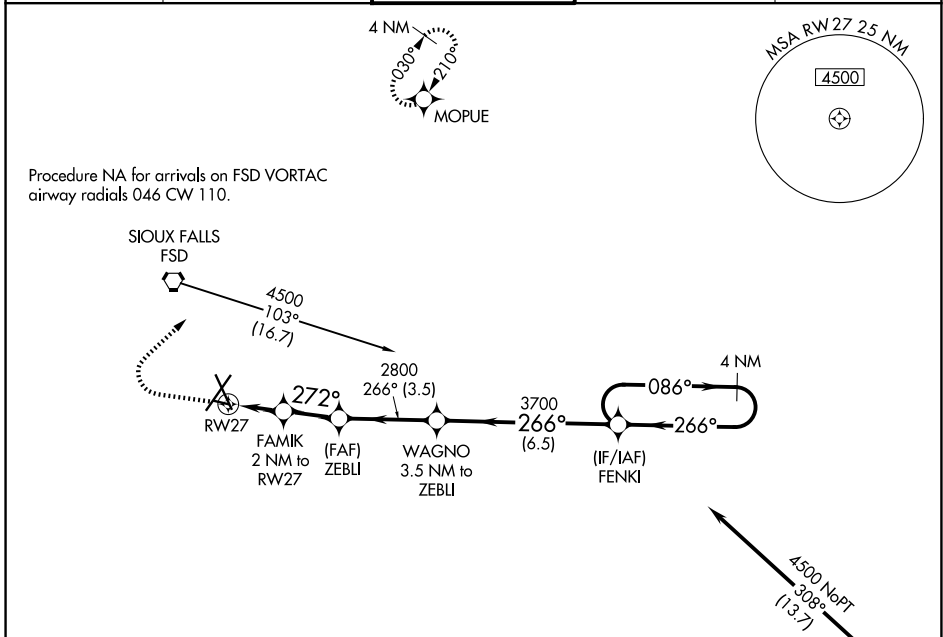
# RNAV (GPS) RWY 27

JOE FOSS FLD (FSD)

RNP APCH.  
 ASR Rwy 27 helicopter visibility reduction below 3/4 SM NA.  
 -30°C

MISSED APPROACH: Climb to 2500, then climbing right turn to 4000 direct MOPIUE WP and hold.

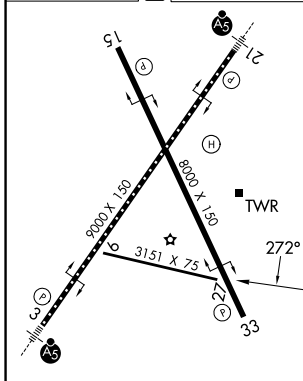
ATIS <b>126.6</b>	SIOUX FALLS APP CON* <b>125.8 284.725</b>	SIOUX FALLS TOWER* <b>118.3 (CTAF) 257.8</b>	GND CON <b>121.9 348.6</b>	UNICOM <b>122.95</b>
----------------------	--	---	-------------------------------	-------------------------



NC-1, 16 APR 2026 to 14 MAY 2026

NC-1, 16 APR 2026 to 14 MAY 2026

ELEV 1430	<b>D</b>	TDZE 1424
-----------	----------	-----------



TDZ/CL Rwy 21  
 MIRL Rwy 9-27  
 REIL Rwy 15 and 33  
 HIRL Rwy 3-21 and 15-33

	2500	4000	MOPIUE				
	↑	↪	✧				
				FAMIK 2 NM to RWY 27	ZEBLI	WAGNO 3.5 NM to ZEBLI	FENKI 4 NM Holding Pattern
				2120	2800	3700	4500
				272°	266°	086°	266°
				2 NM	2 NM	3.5 NM	6.5 NM
CATEGORY	A		B		C		D
LNAV MDA	1960-1		536 (600-1)		NA		NA
CIRCLING	1960-1		1980-1		550 (600-1)		NA