

RNAV (GPS) RWY 9

JOE FOSS FLD (FSD)

APP CRS 098°	Rwy Ldg TDZE Apt Elev	3151 1424 1430
------------------------	-----------------------------	---

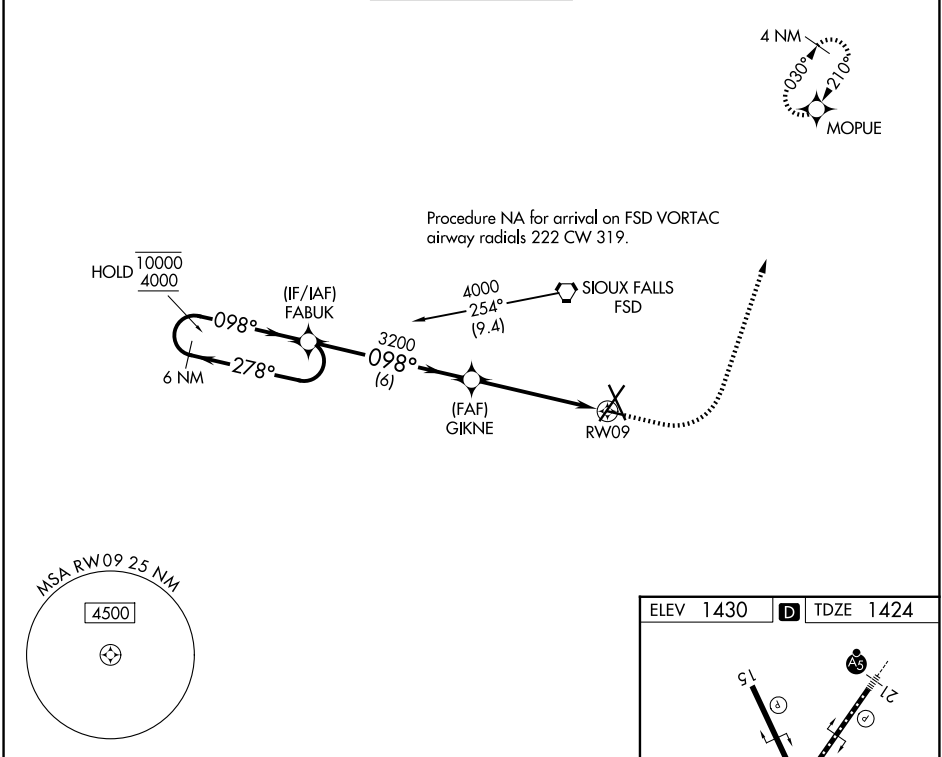
RNP APCH - GPS.

ASR Rwy 9 helicopter visibility reduction below 3/4 SM NA.

ASR -30°C

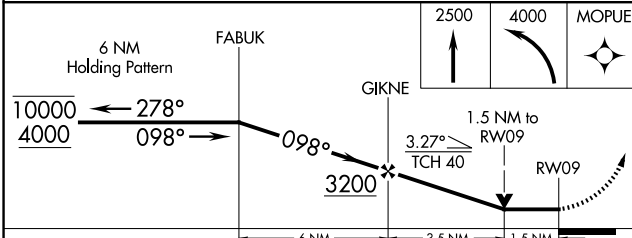
MISSED APPROACH: Climb to 2500 then climbing left turn to 4000 direct MOPUE and hold.

ATIS 126.6	SIoux FALLS APP CON* 125.8 284.725	SIoux FALLS TOWER* 118.3 (CTAF) 257.8	GND CON 121.9 348.6	UNICOM 122.95
----------------------	--	---	-------------------------------	-------------------------



NC-1, 16 APR 2026 to 14 MAY 2026

NC-1, 16 APR 2026 to 14 MAY 2026



CATEGORY	A	B	C	D
LNAV MDA	2000-1	576 (600-1)	NA	
CIRCLING	2000-1	570 (600-1)	NA	

