

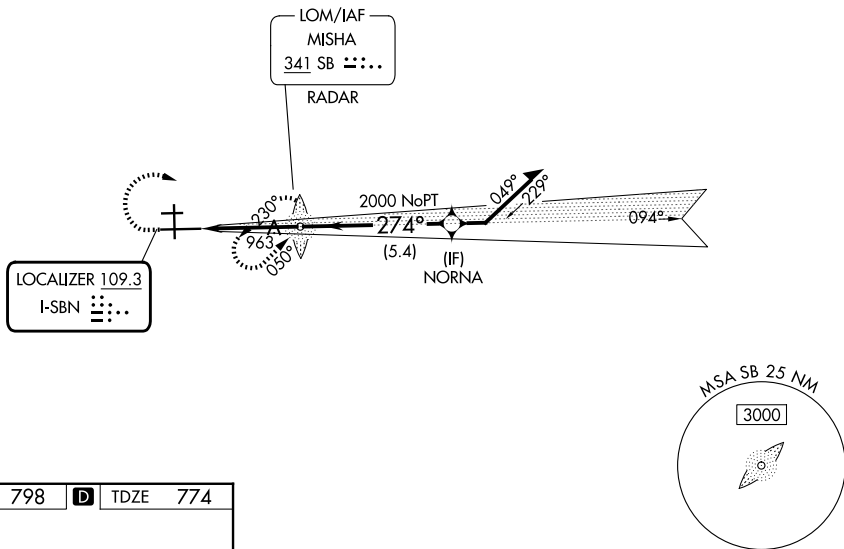
LOC I-SBN 109.3	APP CRS 274°	Rwy Ldg 8412	TDZE 774
		Apt Elev 798	

ILS or LOC RWY 27L

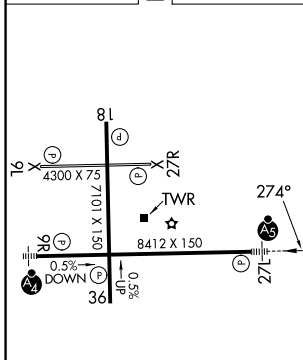
SOUTH BEND INTL (SBN)

RNP APCH - GPS. From NORNA. ADF required.	MALSR 	MISSED APPROACH: Climb to 1500 then climbing right turn to 3000 direct MISHA LOM/RADAR and hold, continue climb-in-hold to 3000.
⚠ Circling Rwy 27R NA at night. ⚠ *RVR 1800 authorized with use of FD or AP or HUD to DA.		

ATIS 120.675	SOUTH BEND APP CON★ 118.55 257.8	SOUTH BEND TOWER★ 135.675 (CTAF) 0 257.8	GND CON 121.7
------------------------	--	--	-------------------------



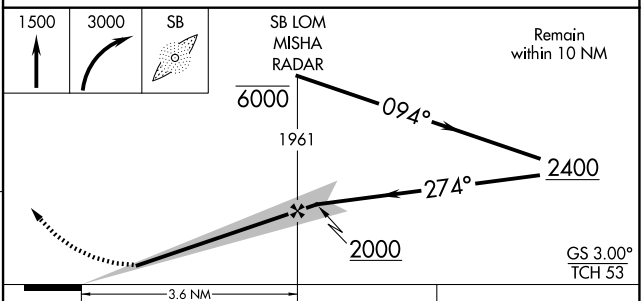
ELEV 798	D	TDZE 774
----------	----------	----------



HIRL Rwy 9R-27L **1**
 MIRL Rwy 18-36 **1**
 MIRL Rwy 9L-27R

FAF to MAP 3.6 NM

Knots	60	90	120	150	180
Min:Sec	3:36	2:24	1:48	1:26	1:12



CATEGORY	A	B	C	D
S-ILS 27L *	974/24 200 (200-½)			
S-LOC 27L	1220/24	446 (500-½)	1220/45	446 (500-¾)
CIRCLING	1280-1	482 (500-1)	1440-1¾ 642 (700-1¾)	1520-2¼ 722 (800-2¼)

GS 3.00°
TCH 53

EC-2, 16 APR 2026 to 14 MAY 2026

EC-2, 16 APR 2026 to 14 MAY 2026