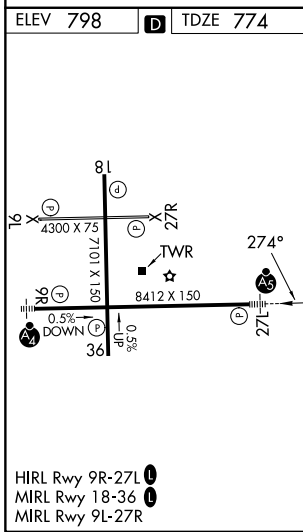
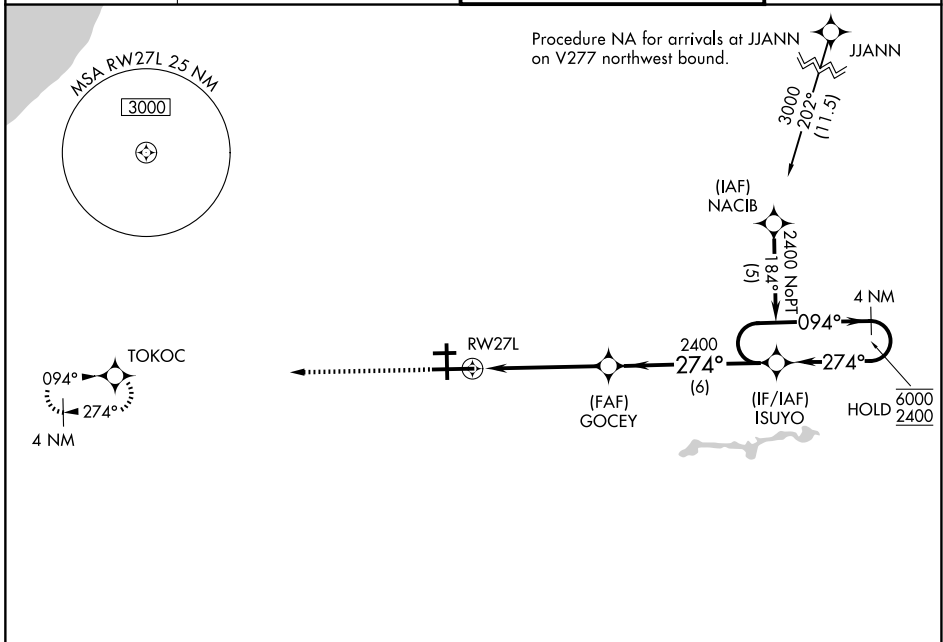


WAAS CH 50108 W27A	APP CRS 274°	Rwy Ldg 8412 TDZE 774 Apt Elev 798
--	------------------------	---

RNAV (GPS) RWY 27L

SOUTH BEND INTL (SBN)

RNP APCH - GPS		MALSR	MISSED APPROACH: Climb to 2600 direct TOKOC and hold.
<p>⚠ For uncompensated Baro-VNAV systems, LNAV/VNAV NA below -19°C or above 54°C. Circling to Rwy 27R NA at night. For inop ALS, increase LNAV Cat C/D visibility to 1 1/2 SM.</p>			
ATIS 120.675	SOUTH BEND APP CON★ 118.55 257.8	SOUTH BEND TOWER★ 135.675 (CTAF) 0 257.8	GND CON 121.7



2600 TOKOC	GOCEY 2400	ISUYO	4 NM Holding Pattern	
1.4 NM to RWY 27L	274°	094°	6000 / 2400	
1.4 NM	3.5 NM	6 NM	GP 3.00° TCH 53	
CATEGORY	A	B	C	D
LPV DA		1030/24	256 (300-1/2)	
LNAV/VNAV DA		1160/40	386 (400-3/4)	
LNAV MDA	1260/24	486 (500-1/2)	1260/50	486 (500-1)
CIRCLING	1280-1	482 (500-1)	1440-1 3/4 642 (700-1 1/4)	1520-2 1/4 722 (800-2 1/4)

EC-2, 16 APR 2026 to 14 MAY 2026

EC-2, 16 APR 2026 to 14 MAY 2026